



Discovering Our Planet Together



The Grand India Wildlife Adventure

An In-Depth Nature Odyssey in Search of Bengal Tigers & Other Rare Wildlife



Discovering Our Planet Together

Table of Contents:

Trip Overview	3
Trip Itinerary	4
Trip Accommodations	10
What Makes Nat Hab Different?	12
Dates & Pricing Information	14
Trip Extensions	23



Discovering Our Planet Together



Trip Details:

Days

13 Days /
Jan–May

Price

From
\$12795
(+Air)

The Grand India Wildlife Adventure

An In-Depth Nature Odyssey in Search of Bengal Tigers & Other Rare Wildlife

The Indian subcontinent is one of the world's most stimulating destinations. While its melange of cultures has long drawn the attention of historians and travelers, its wild habitats offer rare treasures for those who are passionate about nature. This comprehensive safari gets you far away from India's intense cities and into its natural realm, a landscape of powerful rivers, fabled jungles and intriguing wildlife. From Bandhavgarh to the Brahmaputra basin, this is the native territory of the Bengal tiger, whose numbers are on the rise after a century of decline. Conservation travel is integral to protecting wildlife in India, and our presence directly benefits the continued existence of tigers and other precious vanishing species, which we go in search of on daily 4x4 wildlife drives. Join us for the grandest Indian wildlife safari we know of!

Trip Highlights

Explore three of India's top national parks on multiple safari drives in open 4x4s—you won't find a richer or more varied itinerary focused on wildlife

Safari with our naturalist Expedition Leaders in search of tigers, one-horned rhinos, Asian elephants, sloth bears, barking deer, hoolock gibbons and more

Relax in comfort at premier ecolodges tucked next to India's best wildlife reserves, and avoid crowds in our quiet, set-apart locations



Discovering Our Planet Together



Itinerary At A Glance

Day 1

Delhi, India—Old Delhi Tour

Day 2

Jabalpur / Bandhavgarh National Park

Days 3 & 4

Bandhavgarh National Park

Day 5

Bandhavgarh / Kanha National Park & Tiger Reserve

Days 6 & 7

On Safari in Kanha National Park

Day 8

Village Visit / Game Drive in Kanha

Day 9

Kanha—Jungle Walk / Raipur / Kolkata

The Grand India Wildlife Adventure Itinerary

An In-Depth Nature Odyssey in Search of Bengal Tigers & Other Rare Wildlife



Discovering Our Planet Together

Day 1: Delhi, India—Old Delhi Tour

Arrive in New Delhi and transfer to the 5-star Taj Mahal Hotel, optimally located in the leafy heart of the Lutyens Delhi district with its broad boulevards, historic homes and government enclaves. This afternoon, explore the older parts of this sprawling, vibrant city on a rickshaw tour that reveals the many layers of Delhi's captivating history. Stroll through the bylanes of Old Delhi and visit bustling Chandni Chowk Market and Jama Masjid, India's largest mosque and the architectural magnum opus of Mughal Emperor Shah Jahan. Built in the mid-17th century, the striking edifice is constructed of alternating vertical strips of red sandstone and white marble, with a vast inner courtyard that can hold 25,000 people. Depending on our timing, we may also visit a memorial to Mahatma Gandhi, or Bangla Sahib, one of the country's most revered Sikh temples. The complex is associated with Guru Har Krishan and includes the main temple, a school, a sacred water tank and a large community kitchen that generously prepares over 10,000 free meals each day, known as langar, all cooked by volunteers using donated ingredients from Sikh farmers. Return to our hotel with time to refresh before a welcome dinner this evening, with an orientation to our India wildlife safari by our Expedition Leader.





Itinerary At A Glance

Day 10

Jorhat / Kaziranga National Park

Days 11 & 12

Kaziranga National Park

Day 13

Guwahati / Delhi / Depart

Day 2: Jabalpur / Bandhavgarh National Park

Transfer to the airport very early this morning for our flight south to Jabalpur. Continue on a half-day's drive through the countryside of Madhya Pradesh to reach Bandhavgarh National Park. An essential stop on any serious India safari, Bandhavgarh is renowned for one of the country's highest concentrations of Bengal tigers. Originally established as a national park in 1968, Bandhavgarh was declared a protected tiger reserve under Project Tiger in 1993. At 444 square miles, it is a relatively small park with a thriving tiger population, offering visitors a good chance of encountering them, as well as other distinctive Indian wildlife. Check in to Kings Lodge, a leading ecolodge surrounded by wild natural forest just outside the park boundary. Then, time permitting, we'll set out on our first wildlife drive in open 4x4 safari vehicles.

Days 3 & 4: Bandhavgarh National Park

Over the next two days, explore Bandhavgarh's varied habitats on morning and afternoon wildlife drives. Covered predominantly with sal and mixed deciduous forest, thickets of bamboo and expansive grasslands that line the stream valleys, the park's hilly terrain harbors one of the world's highest densities of tigers. Bandhavgarh was once a prime hunting reserve for the Maharajas of Rewa, where Maharaja Raman Singh alone shot an astounding 111 tigers by 1914. Today it is a pacesetter in tiger protection. With tigers at the apex of the food chain, Bandhavgarh's rich biodiversity includes a multitude of other wildlife. We expect to see a sampler of its 37 mammal species, among which are leopard, jungle cat, civet, wild boar, sambar, spotted deer, muntjac (barking deer), gaur, sloth bear and Asiatic jackal. Some 250 bird species, 70 different butterflies and various reptiles round out the diverse wildlife population.

Day 5: Bandhavgarh / Kanha National Park & Tiger Reserve

Embark this morning on a half-day drive to Kanha National Park. Situated in the Satpura Hills of central India, the park covers 750 square miles of rich and varied wildlife habitat. Its lush sal and bamboo forests, grassy meadows and ravines provided inspiration to Rudyard Kipling for his famous collection of stories in *The Jungle Book*. Kanha was established as a national park in 1955 and forms the core of the Kanha Tiger Reserve, created in 1974 under India's Project Tiger. The park's landmark achievement is the preservation of the rare barasingha, an endangered swamp deer with 12-point antlers, saving it from near-extinction. Strict conservation programs for the overall protection of the park's fauna and flora make Kanha one of the most exemplary national parks in Asia. From our luxurious ecolodge base in the tiger heartland of the world, learn in depth about the Bengal tiger and its habitat and observe how conservation travel directly benefits local communities and the tiger reserve. Following lunch on arrival, gain an introduction to the region on an initial safari drive in the park's scenic buffer zone, where we occasionally see Bengal tigers among other abundant wildlife.



Days 6 & 7: On Safari in Kanha National Park

Scenic Kanha, once a hunting ground for imperial rulers and viceroys, is now one of India's most important conservation reserves. We spend three days exploring this premier national park in search of Bengal tigers and other wildlife on excursions in open 4x4 vehicles. With ideal habitat for tigers and their prey, it offers some of India's best tiger viewing, though it can take effort to locate them in the sun-dappled forest that provides superb camouflage for many species. On our first two days, we greet the dawn with an early wildlife drive, entering the park just as the sun's rays are breaking over the jungle. The open meadows where herbivores graze attract tiger, leopard and dhole (wild dog) to the edges of the clearings, and we'll hope to see some of these predators on the hunt. The Banjaar River bordering the park provides a steady water source for wildlife. Dense jungle interspersed with vast grassy meadows called *maidans* support a range of species similar to those in Bandhavgarh. Other mammals we might see include barasingha (swamp deer), common langur, gaur (the world's largest wild ox) and rhesus monkeys. After returning to our ecolodge for lunch, we head back out for afternoon wildlife drives, anticipating more chances to search for tigers and other wildlife.

Day 8: Village Visit / Game Drive in Kanha

Enjoy a leisurely breakfast followed by a walk through the village, including a visit to a local school. Gain insight into the daily lives and traditions of the Indigenous Baiga and Gond tribal people who have been at home in the jungle for centuries. Learn about their enduring culture and customs, including foraging practices, medicinal plants and subsistence hunting and fishing, with a chance to sample some of their foods and the floral alcohol they brew inside mud-plastered homes. We also admire their art, handicrafts, silver jewelry and intricate tattoos as we witness these rich artistic expressions. This afternoon, we have a final game drive in Kanha National Park, for one last chance to spot tigers and other notable wildlife amid the photogenic landscape of rolling hills, dense forest and grasslands. Later this evening, after we gather for dinner, join in some festive dancing around the campfire during a cultural presentation at our lodge.



Discovering Our Planet Together

Day 9: Kanha—Jungle Walk / Raipur / Kolkata

As the morning mists lift, we take a walk with our Expedition Leader in the buffer zone on the edge of the park's core area, following the Bahmani Nature Trail through pristine sal forest along the banks of the Banjar River. To be on foot in the jungle offers an intimate, primal encounter with this dense habitat and its wild inhabitants, in a manner that touches all five senses. Feel the leathery texture of a tendu leaf or size-up a tiger's pugmark with your hand. Smell the medley of fragrances, from blooming flowers to the aromatic herbs trampled by herds of deer. Hear birdsongs, taste wild berries, and feel the thrill of walking on paths imprinted by predators as we listen for alarm calls that resound through the jungle. Our guide shows us how to interpret tracks and other signs of animal activity, and it's especially exciting to find fresh pugmarks on the sandy riverbank. Look, too, for scratch marks, scat, droppings and scent marks that foster our awareness of the multitude of hidden creatures that surround us. Get a glimpse into the ancient geological history of this region, standing on the metamorphic rocks that edge the river, with gneiss, basalt and quartz exposed by the erosive power of water flowing for millions of years. We also learn more about the local Indigenous people who have been hunter-gatherers in the jungle for millennia, living as part of the intricate web of life.

After our jungle walk, we drive a half-day to Raipur, watching scenes of daily rural life unfold along the roadside, then fly to Kolkata late this afternoon. Our luxury hotel not far from the Kolkata airport provides a restful night's sleep after a long day of travel as we transit from one region of the country to another, with convenient access for our early flight tomorrow morning.

Day 10: Jorhat / Kaziranga National Park

Fly from Kolkata to Jorhat and continue by road into far-eastern India to reach Kaziranga National Park in the state of Assam. The park, which borders the sacred Brahmaputra River, was created in 1926 as a refuge for the one-horned rhinoceros. Once hunted nearly to extinction, this 2-ton beast today is a conservation success story, its population rebounding to more than 2,000 individuals. Two-thirds of the world's one-horned rhinos are found within the park, and we're sure to see plenty of them grazing in the open. In addition to the rhino, Kaziranga is home to some of India's other largest mammals including Asian elephant, Asian water buffalo and barasingha. Stay at Diphlu River Lodge, whose verdant grounds contain more than 40 species of trees and some 200 species of shrubs, creepers and climbers.



Days 11 & 12: Kaziranga National Park

Morning and afternoon wildlife drives reveal Kaziranga's diverse habitats—a mix of elephant grass, thorny rattan cane, tracts of semi-evergreen forest and shallow marshes. Stretching from the banks of the Brahmaputra River to the dense forests of the Mikir Hills, the reserve hosts an impressive variety of animals. In addition to one-horned rhinoceros, keep a close eye out for buffalo, elephant, wild boar, hog deer, hoolock gibbons, sloth bears and pythons, as well as the elusive Bengal tiger. The national park has been declared an Important Bird Area by Birdlife International and is home to a great variety of resident and migratory birds. Drawn to the life-giving artery of the Brahmaputra River, waterfowl abounds, and we may see egrets, pond herons, river terns, black-necked storks, fishing eagles and pelicans. In the river, look for otters and rare Gangetic dolphins.

A special event during our time in Kaziranga is a chance to meet the park's working elephants up close. These elephants, which accompany rangers on regular patrol missions, are accustomed to interacting with guests. Conditions permitting, on one afternoon an elephant will be brought to our lodge where we can interact with it and feed it fruit under the guidance of its handler. On our final evening, revel in memories of our Indian safari adventures as we gather for a farewell dinner.

Day 13: Guwahati / Delhi / Depart

After breakfast, drive to Guwahati to catch our afternoon flight back to Delhi. Upon arrival at the Delhi airport, we transfer to our nearby hotel, just minutes away. An overnight stay is included along with a transfer to the international airport to meet departing flights, most of which leave late this evening.

Please Note: National parks in central India are closed on Wednesday afternoons and on Holi, which typically falls in March. If any portion of our visit to Kanha or Bandhavgarh coincides with these closures, we will have alternate activities planned in place of scheduled safari(s). When closures occur on Holi, guests may have the opportunity to experience this vibrant and culturally significant festival.



Discovering Our Planet Together



Accommodation Details:

Kings Lodge

Singinawa Jungle Lodge

Taj City Center New Town
Kolkata

Diphlu River Lodge

Roseate House New Delhi

Taj Mahal Hotel, New Delhi

For detailed descriptions, visit
nathab.com/asia-adventure-travel/wild-india/accommodations

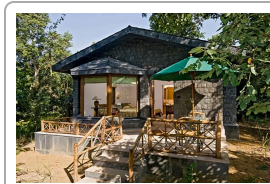
The Grand India Wildlife Adventure Accommodations

An In-Depth Nature Odyssey in Search of Bengal Tigers & Other Rare Wildlife



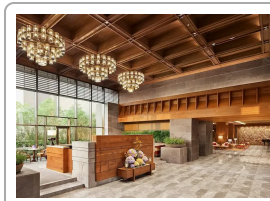
Kings Lodge

Nestled with the sal and bamboo forest on a large estate minutes from Bandhavgarh National Park, this esteemed ecolodge feels at one with nature and is a pacesetter when it comes to sustainable practices.



Singinawa Jungle Lodge

This lodge reflects the practice of the Sherpa philosophy of *singinawa*—protection of the sacred forest—and offers all the comforts of a full-service resort within the wild environs of India's tiger heartland.

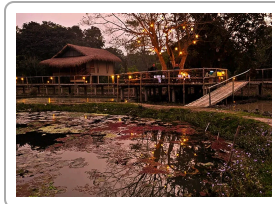


Taj City Center New Town Kolkata

The Taj City Center New Town Kolkata is conveniently located near the airport for ease in transferring between destinations, with all the amenities of a premier full-service hotel.

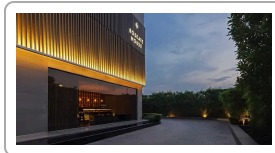


Discovering Our Planet Together



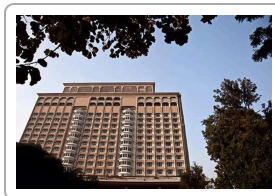
Diphlu River Lodge

Featuring an expansive common area on raised decks and 12 stilted cottages built with local bamboo and thatch, this acclaimed ecolodge feels at one with the jungle environs—and it's a pacesetter for sustainability.



Roseate House New Delhi

A modern sanctuary in New Delhi's vibrant Aerocity, Roseate House is a luxurious urban retreat, offering contemporary rooms, world-class dining, and personalized service—all just minutes from the airport and metro station.



Taj Mahal Hotel, New Delhi

A distinguished address in India's leafy capital district, this 5-star hotel is a New Delhi landmark, with elegant interiors and finely appointed rooms reflecting traditional Mughal heritage in art, antiques and ambience.



Experience India's Wild Side, the Nat Hab Way

India is one of the world's most captivating travel destinations. But choosing a trip can be overwhelming if you're looking to maximize your time in nature, up your odds of seeing tigers, avoid crowds wherever possible, and travel with a superlative guide. That's why we've designed the ideal India odyssey for nature lovers. Our Grand India trip is a comprehensive adventure that is simply the best way to experience India's outstanding wildlife. Here's why:

1 An All-Encompassing Wildlife Itinerary...in Less-Traveled Parks

This is the ultimate India experience for nature lovers. Boost your chances of seeing Bengal tigers—plus a host of other Indian wildlife—on visits to three different national parks that are home to some of India's most concentrated tiger populations. Most travelers go to Ranthambore National Park at peak season, which is heavily advertised and very crowded. We visit equally appealing Bandhavgarh National Park instead, plus Kanha and Kaziranga, which are more remote with far fewer tourists. Kanha also offers some of India's best tiger-viewing possibilities, while Kaziranga offers close encounters with rhinos and wild elephants. We also have a chance to see seven deer species and 600-plus bird species among an impressive diversity of wildlife.

2 India's Finest Naturalist Guides

Our India Expedition Leaders average more than 15 years' experience—with top-level training including resources from WWF scientists. You won't find more knowledgeable, personable or enthusiastic guides than those who are proud to work for us. Our philosophy is simple: a nature adventure is only as good as the guide who leads it, so we provide the very best! **See Expedition Leader bios** with traveler comments regarding the quality of our leaders.

3 A Small Group Means More Authentic Nature Experiences

Most visitors to India travel in large groups aboard tour buses, focusing on cities and crowded cultural monuments. But that's no way to experience India's rich nature, which is our focus. We take just 11 guests, for a lower impact in nature reserves and more personal encounters with wildlife and local people.

4 Nine Days of Wildlife-Focused Activities in Varied Habitats

Spend three days each in three premier wildlife reserves as we explore contrasting Asian habitats: the dry mixed deciduous forests of central India and the moist floodplains and grasslands of the Brahmaputra basin. Morning and afternoon safari outings provide a variety of perspectives.



5 Distinctive Accommodations Enhance Your Safari

When you travel with us to India, our accommodations ensure your every comfort. Environmentally sensitive ecolodges, while secluded, offer exceptional amenities. Each is selected for proximity to wildlife and the high quality of the guest experience. India's luxury urban hotels are renowned worldwide, and the 5-star hospitality of the landmark Taj Mahal Hotel in Delhi and the Taj City Center New Town Kolkata offer welcome indulgences before and between our safari adventures.

6 Our Presence Directly Helps to Protect Tigers

After years of precipitously declining tiger numbers, India is charting steady increases. Its 2022 quadrennial tiger census counted 3,682 tigers, up from 2,967 in 2018, an annual rise of 6%. Conservation groups attribute a share of the increase to responsible ecotourism. The economic value of visitors to India's tiger reserves benefits local communities, offering people an incentive to protect the wildlife they share the land with. Given that India is home to 75% of the world's remaining wild tigers, our presence here for wildlife tourism here is integral to that continued success.

7 Our Quality-Value Guarantee Ensures Your Outstanding India Wildlife Safari

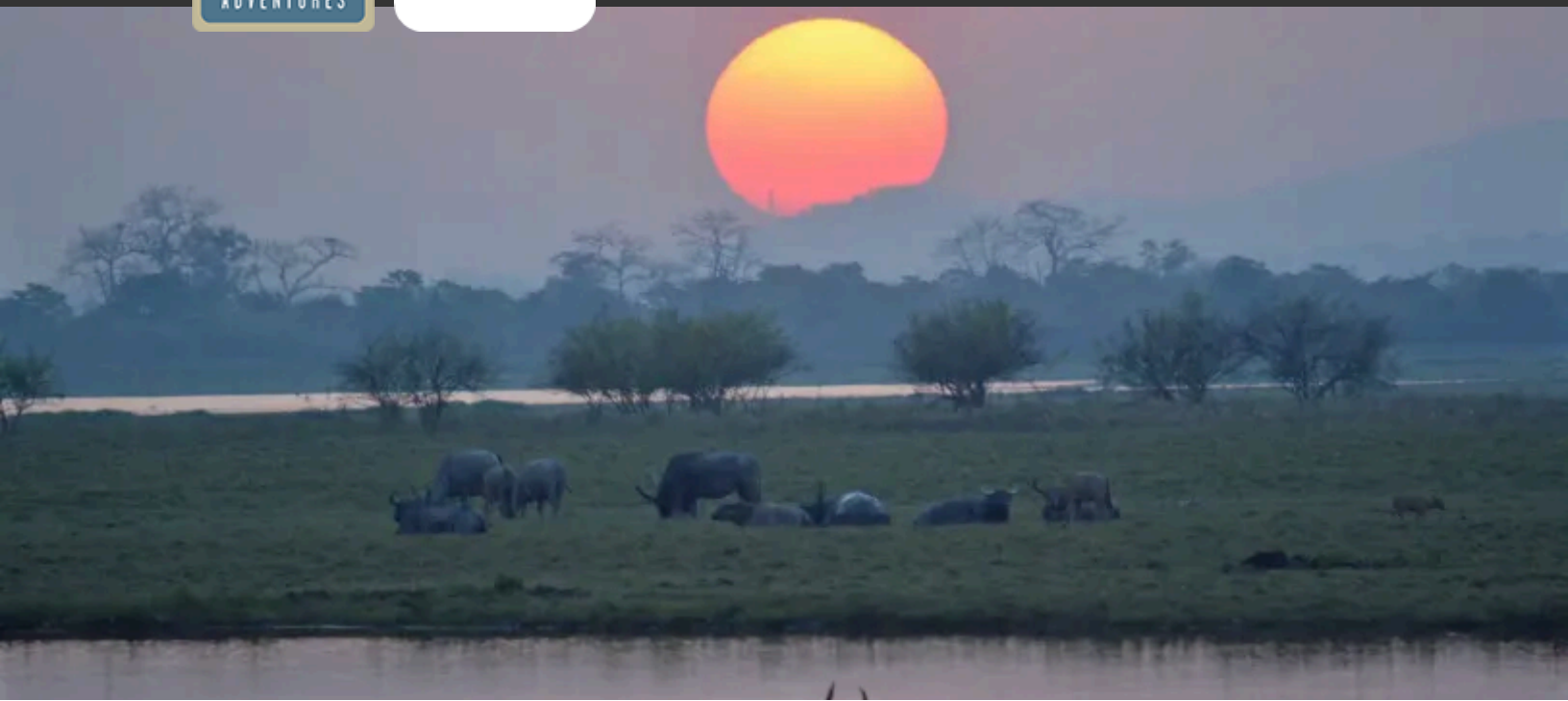
With Natural Habitat Adventures, you receive our exclusive quality value guarantee that promises we will meet the high expectations we set forth in our promotional materials. To our knowledge, this is the most ambitious guarantee made by any adventure travel company.

8 Feel Good About Your Carbon-Neutral Journey

We care deeply about our planet, as we know you do. When you travel with us, the carbon emissions from your trip are 100% offset—including your round-trip flights from home. Natural Habitat Adventures has been the world's first carbon-neutral travel company since 2007.



Discovering Our Planet Together



Dates & Pricing Summary:

Prices:
From \$12795
(+Air)

Group Size:
Limited to 11
Travelers

The Grand India Wildlife Adventure Dates, Pricing & Info

An In-Depth Nature Odyssey in Search of Bengal Tigers & Other Rare Wildlife

2026 Departures

Departure	Return	Notes
Feb 5, 2026	Feb 17, 2026	\$13195 USD (+internal air)
Feb 12, 2026	Feb 24, 2026	\$13195 USD (+internal air)
Feb 19, 2026	Mar 3, 2026	\$13195 USD (+internal air)
Feb 26, 2026	Mar 10, 2026	\$13195 USD (+internal air)
Mar 5, 2026	Mar 17, 2026	\$13195 USD (+internal air) Habitat Club Pricing Available
Mar 12, 2026	Mar 24, 2026	\$13195 USD (+internal air)



Discovering Our Planet Together

Dates & Pricing Summary:

Prices:
From \$12795
(+Air)

Group Size:
Limited to 11
Travelers

Departure	Return	Notes
Mar 26, 2026	Apr 7, 2026	\$13195 USD (+internal air)
Apr 2, 2026	Apr 14, 2026	\$13195 USD (+internal air)
Apr 9, 2026	Apr 21, 2026	\$13195 USD (+internal air)
Apr 16, 2026	Apr 28, 2026	\$12795 USD (+internal air)
Apr 23, 2026	May 5, 2026	\$13195 USD (+internal air) Habitat Club Pricing Available
Apr 27, 2026	May 9, 2026	\$12795 USD (+internal air)

2027 Departures

Departure	Return	Notes
Jan 3, 2027	Jan 15, 2027	\$14295 USD (+internal air) Habitat Club Pricing Available
Jan 7, 2027	Jan 19, 2027	\$14295 USD (+internal air)
Jan 16, 2027	Jan 28, 2027	\$14295 USD (+internal air)
Jan 20, 2027	Feb 1, 2027	\$13895 USD (+internal air)
Jan 24, 2027	Feb 5, 2027	\$14295 USD (+internal air)
Feb 1, 2027	Feb 13, 2027	\$14295 USD (+internal air)



Discovering Our Planet Together

Dates & Pricing Summary:

Prices:
From \$12795
(+Air)

Group Size:
Limited to 11
Travelers

Departure	Return	Notes
Feb 10, 2027	Feb 22, 2027	\$14295 USD (+internal air)
Feb 14, 2027	Feb 26, 2027	\$14295 USD (+internal air)
Feb 22, 2027	Mar 6, 2027	\$13895 USD (+internal air)
Feb 25, 2027	Mar 9, 2027	\$13895 USD (+internal air)
Mar 5, 2027	Mar 17, 2027	\$13895 USD (+internal air)
Mar 13, 2027	Mar 25, 2027	\$14295 USD (+internal air)
Mar 17, 2027	Mar 29, 2027	\$13895 USD (+internal air)
Mar 21, 2027	Apr 2, 2027	\$13895 USD (+internal air)
Mar 29, 2027	Apr 10, 2027	\$13895 USD (+internal air)
Apr 3, 2027	Apr 15, 2027	\$13895 USD (+internal air)
Apr 7, 2027	Apr 19, 2027	\$13895 USD (+internal air)
Apr 15, 2027	Apr 27, 2027	\$13895 USD (+internal air)
Apr 19, 2027	May 1, 2027	\$13895 USD (+internal air)
Apr 23, 2027	May 5, 2027	\$13895 USD (+internal air)
Apr 27, 2027	May 9, 2027	\$13895 USD (+internal air)



Discovering Our Planet Together

Dates & Pricing Summary:

Prices:
From \$12795
(+Air)

Group Size:
Limited to 11
Travelers

Departure	Return	Notes
May 1, 2027	May 13, 2027	\$13895 USD (+internal air)

2028 Departures

Departure	Return	Notes
! Prices and dates not confirmed for 2028		
Jan 4, 2028	Jan 16, 2028	\$12795 USD (+internal air)
Jan 8, 2028	Jan 20, 2028	\$12795 USD (+internal air)
Jan 17, 2028	Jan 29, 2028	\$12795 USD (+internal air)
Jan 21, 2028	Feb 2, 2028	\$12795 USD (+internal air)
Jan 25, 2028	Feb 6, 2028	\$12795 USD (+internal air)
Feb 1, 2028	Feb 13, 2028	\$12795 USD (+internal air)
Feb 2, 2028	Feb 14, 2028	\$12795 USD (+internal air)
Feb 7, 2028	Feb 19, 2028	\$12795 USD (+internal air)
Feb 11, 2028	Feb 23, 2028	\$12795 USD (+internal air)
Feb 15, 2028	Feb 27, 2028	\$12795 USD (+internal air)
Feb 23, 2028	Mar 6, 2028	\$12795 USD (+internal air)
Feb 26, 2028	Mar 9, 2028	\$12795 USD (+internal air)



Discovering Our Planet Together

Dates & Pricing Summary:

Prices:
From \$12795
(+Air)

Group Size:
Limited to 11
Travelers

Departure	Return	Notes
! Prices and dates not confirmed for 2028		
Mar 6, 2028	Mar 18, 2028	\$12795 USD (+internal air)
Mar 10, 2028	Mar 22, 2028	\$12795 USD (+internal air)
Mar 14, 2028	Mar 26, 2028	\$12795 USD (+internal air)
Mar 18, 2028	Mar 30, 2028	\$12795 USD (+internal air)
Mar 22, 2028	Apr 3, 2028	\$12795 USD (+internal air)
Mar 30, 2028	Apr 11, 2028	\$12795 USD (+internal air)
Apr 4, 2028	Apr 16, 2028	\$12795 USD (+internal air)
Apr 8, 2028	Apr 20, 2028	\$12795 USD (+internal air)
Apr 16, 2028	Apr 28, 2028	\$12795 USD (+internal air)
Apr 20, 2028	May 2, 2028	\$12795 USD (+internal air)
Apr 24, 2028	May 6, 2028	\$12795 USD (+internal air)
Apr 28, 2028	May 10, 2028	\$12795 USD (+internal air)
May 2, 2028	May 14, 2028	\$12795 USD (+internal air)



Pricing

See <https://nathab.com/asia-adventure-travel/wild-india/dates-fees> for the latest pricing details.

Included

- **Trip price includes:** Accommodations, services of Nat Hab's professional Expedition Leader(s), local guides, lodge and park staff, all meals from dinner on Day 1 through lunch on final day, some gratuities, still camera fees, airport transfers on Day 1 and final day, all activities and entrance fees, all taxes, permits and service fees.
- **Internal air cost includes:** All flights within the itinerary (this will be listed separately on our invoicing).

Not Included

Travel to and from the start and end point of your trip, alcoholic beverages, some gratuities, passport and visa fees, optional activities, items of a personal nature (phone calls, laundry and internet, etc.), airline baggage fees, required medical evacuation insurance, optional travel protection insurance. Note: India requires additional fees for video camera usage in parks, which is not included in your trip fee.



Important Information About This Trip

Wildlife Encounters

Our guests choose a trip to India to encounter the country's unique wildlife. And while wild India is captivating, there is a significant difference between wildlife experiences in the Indian jungle and a typical African safari. Sometimes, guests attracted to India for a "tiger safari" can be disappointed to see fewer animals than expected, or at least fewer than they might typically see in Africa, if we are comparing tiger sightings to lions, for example. It is not that India's jungles are thinly populated with wildlife, but, similar to places like Costa Rica where the forest vegetation is dense, animals have mastered the art of camouflage in thick cover and can be very difficult to spot. We design our itineraries to capitalize on the best places and seasons to see tigers. But various factors can affect potential sightings, including inclement weather, which creates small pockets of water that allow the animals to remain hidden in the forest, rather than being driven into the open to drink. There is no doubt that the Indian jungles Kipling immortalized, offer wondrous discoveries. And the secret to uncovering them lies with the value of expert guides—and ours are second to none! With realistic expectations, an Indian safari holds plenty of rewards.

The Seasons

We schedule our departures at the best times of year to see wildlife. While tiger sightings do take a while to fully pick up after the long monsoon off-season (April–September), they become more frequent from mid-November onward. Water begins to evaporate from deep forest pools and streams, vegetation starts to dry up, and, most importantly, tiger activity accelerates, including mating, which mostly occurs in December and January. During this season, tigers are consistently on the move, walking game trails extensively, which makes sightings more probable and more exciting. They are also at their most vocal as they call out to mates and spray and mark their territories, stepping up their breeding efforts. In the fall and early winter, tigers (and many other animals) grow a brilliant winter coat that makes them look their most alluring. Other species, like the hardground swamp deer, also enter their rut in December, and males are extremely vocal with bugling. Winter is also the best time for birdwatching in India's tiger habitats, as large numbers of palearctic migrants arrive. Landscapes are also stunning in winter—frost on the grasslands and mist rising until late in the morning create an ethereal atmosphere, with shafts of sunlight filtering through the canopy. Weather-wise, winter is the most pleasant time of the year to travel in India. Cooler temperatures provide more comfort, and the previous season's rains create lush green scenery, though, it's important to keep in mind that thick jungle vegetation can impede wildlife sightings.

Safari Vehicle Routes & Seating Allocation

In contrast to nearly every other safari country we travel to, in India the driving routes in national parks are pre-assigned and must be followed. This is generally not a problem, but when searching for tigers, it can be frustrating, as they simply may not be visible on a particular route on a given day. We always hope to follow different routes on different days. However, the park service allocates routes at random for each vehicle, so there is no guarantee that vehicles will get a different route for each wildlife drive. Please understand that your assigned vehicle could take the same route multiple times, and we have no control over this situation, although our Expedition Leaders and local guides do all they can to facilitate rewarding animal sightings.

Also, on rare occasion you may see film crews inside the parks. They hold special permits to film inside park bounds with certain advantages over regular tourist vehicles, such as spending the entire day inside the park with access to places others cannot go.

Indian park regulations are also extremely strict with regard to seating arrangements on wildlife drives. Requirements dictate that guests be confirmed in specific vehicles upon booking, well in advance of the departure date, and we are unable to change vehicles while we are exploring each park. To the best of our ability, we attempt to ensure that guests who are traveling with a partner or friend will have seats together during wildlife drives. Because couples or friends are booked together in the same vehicle and are unable to



Discovering Our Planet Together

split up during drives, it may mean that in some instances, certain vehicles will contain fewer guests than others.

It is also important to understand the limitations based on available vehicle space. Each open safari vehicle has two front seats and two rows of bench seats. Regulations require that the front two seats be occupied by a park ranger and registered driver. Our Expedition Leader and local guides are allowed more flexibility and will switch among vehicles for each drive so all guests are able to spend equal time with them. However, this means that since our Expedition Leaders and local guides rotate vehicles, there may be times when there will be three people (two guests and one Expedition Leader or local guide) to a row—our Expedition Leader/local guides may be required to sit in the rear left seat of the vehicle.

Please know that while there are indeed limiting factors to the tiger viewing experience in India, we have gone to every effort to ensure that your Grand India Wildlife Adventure India with Nat Hab provides the best tiger and wildlife viewing potential possible.

Cell Phone Ban in Bandhavgarh and Kanha National Parks

Tiger reserves in the state of Madhya Pradesh, which includes Bandhavgarh and Kanha national parks, have a strict ban on the use of mobile phones by all visitors within the parks' Core Zone, with no exceptions. Guests are not allowed to use cell phones for *any* purpose, including photography and taking videos, anywhere within the park. This ban is in place to reduce disturbance to wildlife, enhance the safari experience, and combat the use of location tags by poachers to track tigers. It also supports traditional tiger-tracking methods through word of mouth, which minimizes the number of vehicles at sightings. Tiger sightings take on a whole new level of intimacy when cell phones are set aside, ensuring a more respectful and less intrusive encounter for both humans and wildlife.

To facilitate photography in the park, Nat Hab has developed an exclusive program with Lensrentals, a premier lens rental company. Through our special arrangement, Nat Hab travelers can rent top-quality cameras, lenses, spotting scopes, tripods, flashes, backpacks and other equipment at a 15% discount. To review the available options, visit lensrentals.com. To obtain the discount, add the code "NATHAB15" to the "Promo Code" box and hit "Apply" upon checkout.

Mandatory Insurance

Since the areas we travel to on this trip are remote and wild (that's why we go there!), we require medical evacuation insurance for our guests' safety. If you decline the medical evacuation insurance coverage offered by Natural Habitat, we request that you send us documentation of the independent coverage you have selected. We will add the cost of a medical evacuation policy to your tour invoice until you provide our office with proof of coverage including your insurance company's name, contact number and your individual policy number. Thank you for understanding that our policy exists exclusively in the interest of our guests' safety.



Getting There & Getting Home

This trip begins and ends in Delhi. Because this is a long international journey with considerable travel time and time-zone adjustment, **we recommend that you arrive the night before Day 1** to rest from your travels and begin the trip refreshed. For guests who come in early, our recommended hotel will be included in your pre-departure materials.

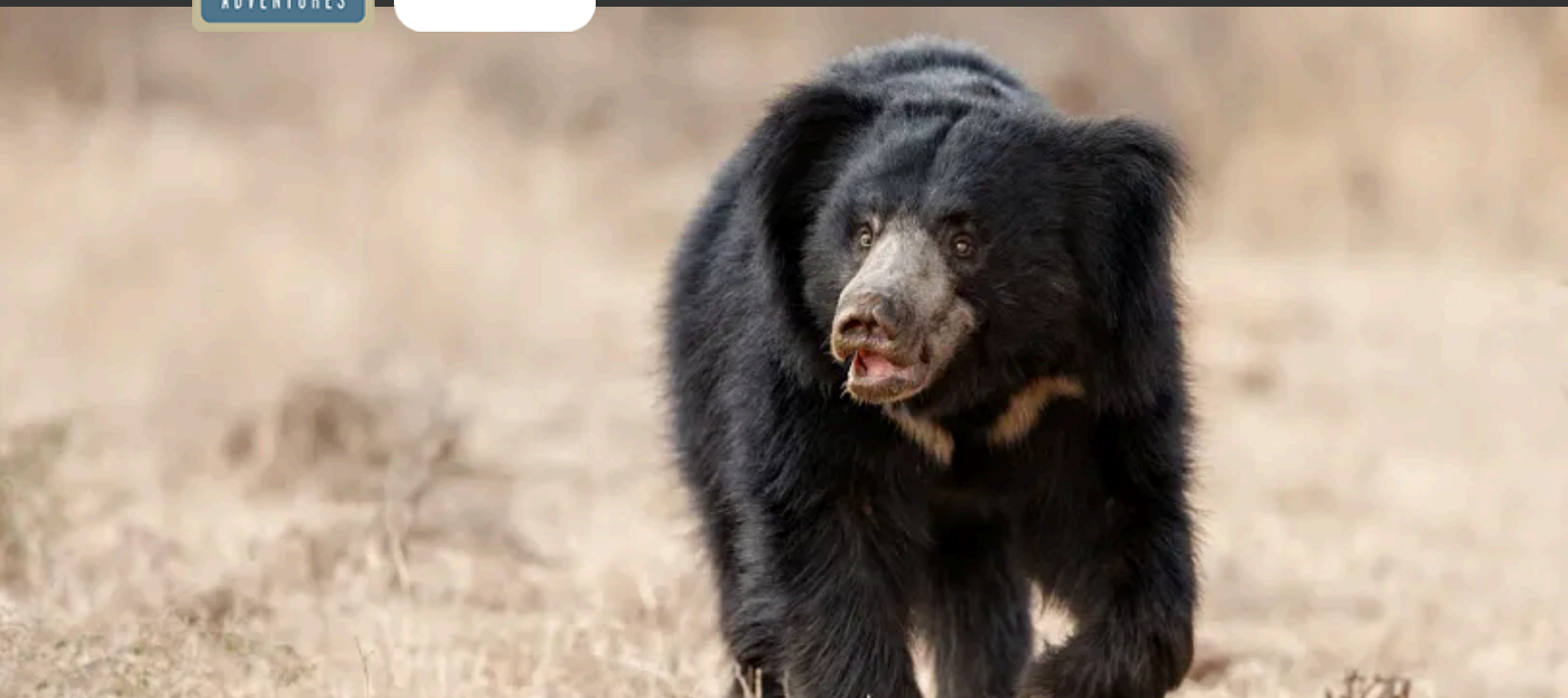
If you plan to arrive on Day 1, you must arrive in Delhi by 9 am in order to participate in a guided city tour beginning at approximately 1 pm.

You may depart Delhi any time after 9 pm on the final day.

Our Natural Habitat Adventures Travel Desk can best assist with your travel reservations, as our staff is familiar with the specific requirements of this program and can help arrange the most efficient itinerary. Please call us at 800-543-8917. While we offer the best available rates to us on airfare and additional nights' accommodations, you may occasionally find special web rates or lower fares online.



Discovering Our Planet Together



Extension Details:

Agra & the Taj Mahal
\$2395

Wild & Ancient Himalaya: Nepal & Bhutan
\$14795

Land of the Snow Leopard
\$10995

Snow Leopard Quest Photo Expedition
\$12895

The Grand India Wildlife Adventure Extensions

An In-Depth Nature Odyssey in Search of Bengal Tigers & Other Rare Wildlife



Agra & the Taj Mahal

Extend your India wildlife adventure with this cultural journey to the fabled Taj Mahal and Agra Red Fort, elaborate monuments to the splendors of the Mughal imperial age.

\$2395



Wild & Ancient Himalaya: Nepal & Bhutan

Explore mountain heights and jungle lowlands on this soulful journey through the cultural and wildlife treasures of two neighboring Himalayan nations—including rhino tracking in Chitwan National Park.

\$14795 (+air)



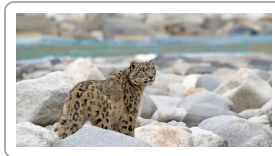
Land of the Snow Leopard

On a winter adventure in far-north India, join a quest to view one of the world's most elusive cats. Stay in the very midst of its high alpine habitat at our private, deluxe ecolodge in a small village in Ladakh.

\$10995 (+air)



Discovering Our Planet Together



Snow Leopard Quest Photo Expedition

In the company of expert spotters, track the world's most elusive big cats in their native Himalayan habitat on our small-group winter photo safari to the remote alpine heights of Ladakh in far-north India.

\$12895 (+air)



Natural Habitat & WWF: Discovering Our Planet Together

Natural Habitat Adventures • PO Box 3065 • Boulder, CO USA 80307

USA & Canada: 800-543-8917 • International: 303-449-3711

© 2026 Natural Habitat Adventures

WWF's membership travel program is operated by Natural Habitat Adventures (Nat Hab). To date, Nat Hab has provided more than \$6 million in support of WWF's mission and will continue to give 1% of gross sales plus \$175,000 annually through 2028. WWF® and ©1986 Panda Symbol are owned by WWF. All rights reserved.