



Discovering Our Planet Together



Southern Australia & Tasmania Photo Expedition

Capture Diverse Landscapes & Intriguing Wildlife on Our Wide-Ranging Photo Safari



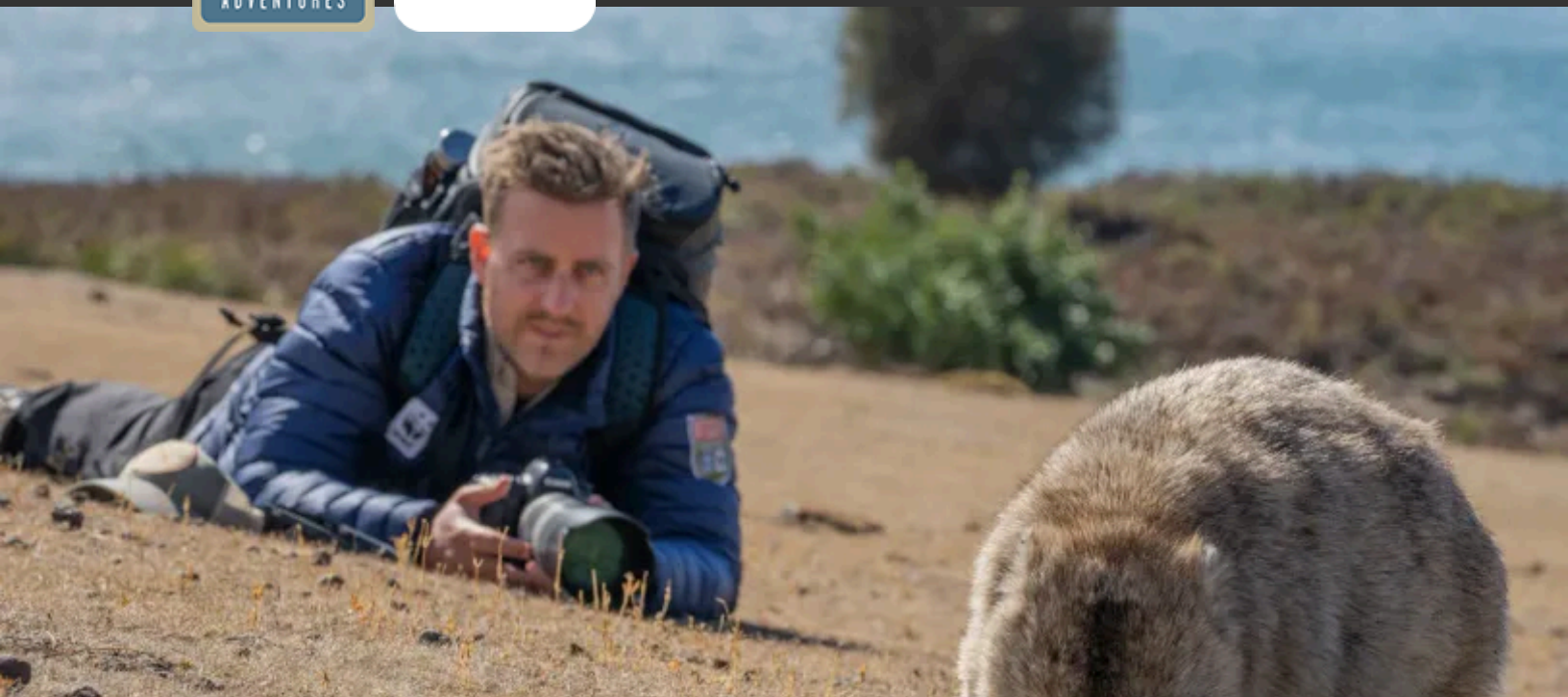
Discovering Our Planet Together

Table of Contents:

Trip Overview	3
Trip Itinerary	4
Trip Accommodations	13
What Makes Nat Hab Different?	15
Dates & Pricing Information	17
Trip Extensions	22



Discovering Our Planet Together



Trip Details:

Days

14 Days /
Feb–Mar,
Oct, Dec

Price

From
\$19495

Southern Australia & Tasmania Photo Expedition

Capture Diverse Landscapes & Intriguing Wildlife on Our Wide-Ranging Photo Safari

Southern Australia is full of features to entice nature photographers, with dramatic landscapes, unique flora and quirky animals, from the familiar koala to the endangered Tasmanian devil. Many unusual species stir to action after dark, and we seek them out when the light is low—not to mention stunning astrophotography, including the classic Southern Cross. Settings include wilderness preserves plus managed conservation sanctuaries where we capture images of rare creatures virtually unseen in the wild. Landscapes hold their own allure: Shoot wave-battered sea stacks off the Southern Ocean coast, pursue artistic compositions of giant tree ferns in the temperate rainforest, and get panoramas of vast glacial valleys in Tasmania. Each night, tuck into secluded ecolodges to unwind in comfort as you peruse the day's photographs. Our Expedition Leader, a nature photography pro, will offer instruction and tips to get the best shot, plus helpful editing suggestions to deliver a matchless Photo Expedition among the wonders way down under.

Trip Highlights

Photograph intriguing species found only in Australia—koala, kangaroo, wombat, wallaby, glossy black cockatoo, echidna, pademelon, platypus and more!

Shoot scenery in the varied habitats and wildlife-rich reserves of Tasmania, Kangaroo Island and Cape Otway, with a private boat cruise on Maria Island

Greatly enhancing access, our private flights give you far more time for nature photography, rather than in airports, cities and on long drives



Discovering Our Planet Together



Itinerary At A Glance

Day 1

Adelaide, Australia

Day 2

Adelaide / Private Flight to
Kangaroo Island / Cygnet Park
Sanctuary / Stokes Bay

Day 3

Flinders Chase National Park /
Grassdale—Kangaroo
Photography

Day 4

Seal Bay Conservation Park—Sea
Lion Photography / Baudin
Conservation Park

Day 5

Private Flight to Warrnambool /
Tower Hill Wildlife Reserve / Great
Ocean Road—Port Campbell
National Park

Day 6

Twelve Apostles / Great Otway
National Park / Private Tour of
Wildlife Wonders Sanctuary

Southern Australia & Tasmania Photo Expedition Itinerary

Capture Diverse Landscapes & Intriguing Wildlife on Our Wide-Ranging Photo Safari



Discovering Our Planet Together

Day 7

Great Ocean Road / Private Flight
to Tasmania / Cradle Mountain

Day 1: Adelaide, Australia

Arrive in Adelaide, capital of the state of South Australia, and the homeland of the Aboriginal Kurna peoples. Wedged between the Mount Lofty Ranges and Gulf St. Vincent, Adelaide is very photogenic. Guests who arrive early can practice wildlife portrait and landscape photography while exploring local parks alive with Australian birds. Expect to see cockatoos, lorikeets and magpies as your first Australian wildlife subjects. Downtown, you'll find historic buildings and churches that offer a range of photo opportunities.

Those who arrive early can join our Expedition Leader for an optional guided tour of Adelaide Botanic Garden departing at 3 pm. Just a 5-minute drive from our hotel, the gardens are a vibrant oasis in the heart of the city. Highlights include the Palm House, Bicentennial Conservatory and the Amazon Waterlily Pavilion, but the star subject is the famous flying foxes. These large fruit bats aren't actually related to foxes, but their faces bear an uncanny resemblance to the canine. Their wingspan can span 3 feet, and they're vital pollinators that are also very photogenic.

This evening, gather with your Photo Expedition Leader for a welcome dinner and introduction to our photographic journey through Kangaroo Island, Tasmania and the Great Ocean Road.





Itinerary At A Glance

Days 8 & 9

Cradle Mountain–Lake St. Clair
National Park / Private Tasmanian
Devil Encounter

Day 10

Marakooa Cave Private Tour /
Central Plateau Conservation Area
/ Derwent Valley

Day 11

Platypus Photo Quest / Mount
Field National Park

Day 12

Bonorong Wildlife Sanctuary
Private Tour / Hobart

Day 13

Private Cruise to Maria Island
National Park

Day 14

Hobart / Depart

Day 2: Adelaide / Private Flight to Kangaroo Island / Cygnet Park Sanctuary / Stokes Bay

Transfer to the airport this morning for our short chartered flight to Kangaroo Island, with 300 miles of coastline surrounded by turquoise ocean. Australia's third-largest island is renowned for its pristine beaches and abundant wildlife that's been naturally protected by the island's isolation. We focus on wildlife photography, training our lenses on kangaroos, wallabies, echidnas, New Zealand fur seals, Australian sea lions, and one of Australia's largest koala populations.

On arrival, head to Cygnet Park Sanctuary, an inspiring private rewilding project that has reestablished habitat for a host of species, including the rare glossy-black cockatoo, plus crimson rosellas, galahs and corellas. With long lenses ready, we'll hope to spot these birds, and we'll have our first photo session with koalas—the sanctuary holds a substantial population.

Following a seafood barbecue lunch at a private bush camp, continue to Stokes Bay to explore a range of habitats, from broom-bush low scrub, casuarina woodland and redgum forest to rocky shoreline and sandy beach. Each setting offers a chance to capture varied wildlife portraits. Along the way, observe and hear about how native plants have adapted to recent bushfires—nearly 50% of Kangaroo Island was burned in 2020, and the recovery since has been impressive. Exploring the Bay of Shoals and Reeves Point, look for more avian subjects including black swans, cormorants, crested and Caspian terns, and a host of bush birds like superb fairy-wrens, crescent honeyeaters, rainbow and purple-crowned lorikeets, their brilliant plumage adding vibrant color to your compositions. By late afternoon, continue to the community of American River where our boutique hotel overlooking the bay awaits.



Discovering Our Planet Together

Day 3: Flinders Chase National Park / Grassdale—Kangaroo Photography

Kangaroo Island's dramatic southern shoreline is on display in Flinders Chase National Park where we focus on coastal landscape photography. At Admiral's Arch, millennia of geological history are on display, where the erosive forces of water and wind have sculpted a large natural rock arch with a view onto the often tempestuous Southern Ocean. A colony of long-nosed fur seals lives nearby, and we may catch them emerging from the water to congregate on the rocks. Be on the lookout for the striking silhouettes of Australasian gannets plunging into the waves and Pacific gulls cruising the coastline, and frame Cape du Couedic lighthouse for a classic image. Next, we walk among the Remarkable Rocks—a set of precariously perched boulders atop a seaside granite dome—whose massive shapes offer opportunities for abstract compositions.

Continue to Grassdale, a pioneer farm adjacent to the Cape Bouguer Wilderness. Learn about the island's agricultural heritage as we follow a narrow track through the bush that opens onto lush pastures popular with Kangaroo Island kangaroos—a unique subspecies endemic to the island. They are content to share their domain with us as we photograph them in the dwindling light, as they become more active at dusk. Keep an eye out, too, for tamar wallabies and nocturnal possums.

Day 4: Seal Bay Conservation Park—Sea Lion Photography / Baudin Conservation Park

Early risers have the option to join our Expedition Leader for a short sunrise walk to the shoreline in pursuit of iconic pelican silhouettes. Then we head for Seal Bay with a bush breakfast en route, allowing us to be first on the beach for extended time with endangered Australian sea lions. Kangaroo Island has one of Australia's largest sea lion colonies, with a population of about 800. On a private guided tour with a park interpreter, we look for action shots of pups tumbling in the surf and zoom in on old bulls whose faces are etched with scars from territorial battles. Use a wide-angle lens to compose scenic images of the colony against the backdrop of dunes and crashing waves. Return to our hotel for lunch and some time to work on images – downloads, processing, and discussion among the group and guides on tips and techniques.

This afternoon, we visit Baudin Conservation Park to learn more about the elusive glossy-black cockatoo. Frame portraits of tamar wallabies against the dappled forest floor, look for eagles soaring overhead, and scout for whales offshore—we also regularly see bottle-nosed dolphins in the cove below. Later, we're joined at our hotel by the world's foremost expert on the short-beaked echidna—an ancient egg-laying mammal that once roamed with dinosaurs, and a coveted wildlife subject for us to seek. Her overview provides us with fascinating details about this unique creatures that resembles a hedgehog yet is most closely related to the platypus.



Day 5: Private Flight to Warrnambool / Tower Hill Wildlife Reserve / Great Ocean Road—Port Campbell National Park

From Kingscote Airport on Kangaroo Island, fly to Warrnambool by private chartered plane and continue by road to Tower Hill Wildlife Reserve. Formed by volcanic eruptions 30,000 years ago, Tower Hill lies within Dhauwurd Wurrung country and has a rich Indigenous culture along with thriving wildlife. Here, we'll frame close-ups of emus striding through lush grasslands, eastern gray kangaroos, swamp wallabies, echidnas, long-necked turtles and more.

Then, our journey begins down the Great Ocean Road, with a stop at the Bay of Islands Coastal Park to shoot its dramatic rock stacks. More varied landscape photography awaits at London Bridge—now known as London Arch after the "bridge" connecting the rock formation to the mainland collapsed in 1990, leaving a stand-alone arch. After dinner in the seaside village of Port Campbell, return to the limestone coast to photograph a colony of thousands of short-tailed shearwaters, which nest atop a towering sea stack. On most summer nights they make a predictable return, offering a chance for stunning video and images.



Day 6: Twelve Apostles / Great Otway National Park / Private Tour of Wildlife Wonders Sanctuary

Begin the day with a sunrise shoot at the famous Twelve Apostles—a group of limestone sea stacks that rise from the Southern Ocean off Port Campbell National Park. Eroded from mainland cliffs in a process that began 10–20 million years ago, these structures were originally caves, then arches that collapsed to become isolated 150-foot-high rock towers. Below, the marine park is filled with vibrant colors from sponge gardens, reef fish, corals and kelp forests.

Along our coastal drive, capture more dramatic limestone formations before entering coastal heathland and the towering eucalyptus forests of Great Otway National Park. Here, opportunities await for panoramic shots to encompass the dramatic scenery, or macrophotography, as we focus on intricate details like the fronds of giant tree ferns and emerald-green moss on bark. Capture the streaming light as it flows through the branches while also looking for birds and wildlife: we might spy Otway black snail, eastern yellow robin, king parrot and crimson rosella, long-nosed potoroos foraging in the leaf litter, ring-tailed possums, swamp wallabies and gray kangaroos. Returning to the coast, scout for Australian fur seals that haul out on a small rocky island in a marine reserve.

A picnic lunch is in store at scenic Melba Gully, surrounded by temperate rainforest and plenty of wildlife. We then head into the forest for a guided walk at Mait's Rest, followed by a visit to Wildlife Wonders Sanctuary, established by the Conservation Ecology Center in Cape Otway, to learn about regional species on a guided walk with a local conservationist. Exploring lush tree fern gullies and eucalypt woodland near the coast, look for bandicoots, potoroos, pademelons and other local fauna that are just waking up to start an active night of feeding and foraging. Back at our hotel, a sunset dinner overlooking the water is a special highlight.



Discovering Our Planet Together

Day 7: Great Ocean Road / Private Flight to Tasmania / Cradle Mountain

Rise early to follow the final scenic stretch of the Great Ocean Road to Geelong, where we board our private chartered flight to the island state of Tasmania, 150 miles south across the Bass Strait. Upon arrival, visit a local arboretum to look for wild platypus in the water features. Watch for bubbles that betray their movements, and adjust your focus for sharp images of their broad bills breaking the water's surface.

A legacy of wilderness appreciation is intrinsic to Tasmania, the birthplace of the world's first environmental political party. The island of Tasmania, or *Iutruwita*, is home to the Aboriginal palawa peoples who have lived here for more than 60,000 years, before the British Empire arrived to form a penal colony in 1803.

Continue to our lodge on the edge of Cradle Mountain National Park, where we settle in before an evening outing to photograph the abundant nocturnal wildlife around the premises—we often spot wallabies, possums, pademelons and our first sightings of wombats. And while we are extremely unlikely to see them, endangered Tasmanian devils and quolls also inhabit these forests. Astrophotography is a highlight here, too, with spectacular stars and a prominent view of the Southern Cross on a clear night.

Days 8 & 9: Cradle Mountain–Lake St. Clair National Park / Private Tasmanian Devil Encounter

Mornings offer golden light and the chance to capture Cradle Mountain's ragged profile reflected in the still waters of Dove Lake. Adjust exposure for the dramatic contrast of jagged peaks against the shimmering blue of the alpine lake. On guided hikes, anticipate encounters with wombats trundling through button grass moors and echidnas rooting for insects beneath ancient King Billy pines in moss-covered forests.

Later, we'll tour a nearby conservation sanctuary working to protect and sustain the endangered Tasmanian devil. Our visit offers a rare opportunity to photograph and learn about this elusive nocturnal species. The sanctuary is involved with breeding, release and re-introduction of Tasmanian devils, in addition to field monitoring of wild populations and orphan rehabilitation. It also houses the closely related spotted-tail and eastern quolls, offering a trifecta of Australia's three largest carnivorous marsupials. One evening, we'll take a night walk back into the national park to look for wild Tasmanian devils, quolls, wombats and possums.



Day 10: Marakoopa Cave Private Tour / Central Plateau Conservation Area / Derwent Valley

This morning, head to Marakoopa Cave in Mole Creek Karst National Park for a private tour of this dramatic limestone cavern. This immense structure contains two underground streams, large vaulted chambers, expanses of glittering flowstone and impressive stalagmites, plus a sparkling display of bioluminescent glowworms. Our Photo Expedition Leaders offer helpful tips for shooting inside the darkened cavern to showcase its natural features. Emerging into daylight, continue south through the wild Central Plateau, where golden moorlands and glacial tarns create endless landscape subjects.

Continue to our secluded accommodation in the remote Derwent Valley, where we settle in for the next two nights. As dusk falls, enjoy the tranquil surroundings and, when skies are clear, take advantage of excellent conditions for night sky photography.

Day 11: Platypus Photo Quest / Mount Field National Park

Wake early to explore the peaceful landscape around our lodge as the soft morning light filters through the trees. Listen for the distinctive call of kookaburras, and compose shots of the shifting hues of dawn over the valley. Devote the rest of the morning to photographing wild platypus in the various ponds and rivers nearby. This 100-million-year-old semiaquatic mammal has a duck-like bill, webbed feet and fur, and along with the echidna, it is one of just two egg-laying mammal species on the planet.

This afternoon, head to Mount Field National Park, established in 1916. We spend the day shooting landscape images among the tallest flowering trees in the world and numerous waterfalls, including 150-foot-high Russell Falls. Practice long exposures to soften the rushing water, contrasting the blurred motion with the sharply detailed ferns and moss-covered boulders.



Discovering Our Planet Together

Day 12: Bonorong Wildlife Sanctuary Private Tour / Hobart

Depart this morning for Bonorong Wildlife Sanctuary for a final immersion among Australia's unique creatures. On a private tour of this facility dedicated to wildlife rescue and conservation, get close-up photos of animals that are locally extinct in other parts of Australia, including the eastern quoll and Tasmanian bettong. Over the last 200 years, Australia has recorded the world's fastest rate of mammal extinctions, and other species are increasingly at risk of joining this trend. For the creatures that are now making their last stand in Tasmania, Bonorong is determined to do all it can to prevent them from disappearing. By capturing images of these wildlife, your photographs can help tell this critical conservation story.

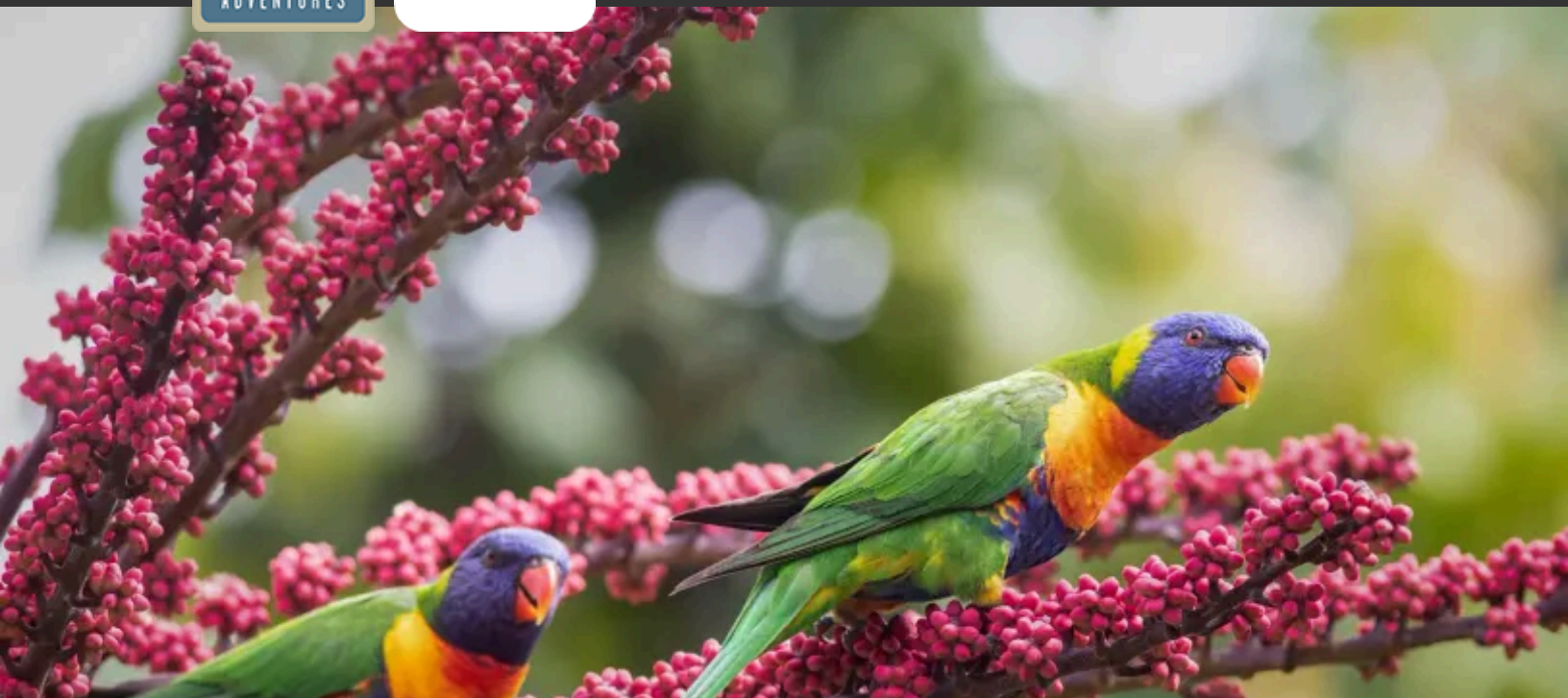
After a private lunch at the sanctuary with our hosts, continue a short distance to Hobart, Tasmania's capital at the mouth of the Derwent River. Once we check into our hotel on the historic waterfront, the rest of the afternoon is free to pursue your own photography in town.

Day 13: Private Cruise to Maria Island National Park

Drive north from Hobart this morning to reach the private chartered boat that will take us to Maria Island National Park. Photograph ruins of a penal colony, part of Tasmania's convict past, now protected as a UNESCO World Heritage Site. Capture images of wind-whipped sandstone cliffs, limestone rocks embedded with fossils, and beaches that reveal an array of tidal-zone marine life. Maria Island is also a paradise for bird photographers. We may spot 11 of Tasmania's 12 endemic bird species here, including the forty-spotted pardalote, one of Australia's most endangered birds, and the Cape Barren goose. Long a refuge for diverse wildlife, the island is an especially good place to look for wombats—we will probably have the opportunity to photograph them at close range. After our final photo extravaganza on Maria Island, return to Hobart where a farewell dinner awaits.

Day 14: Hobart / Depart

Our southern Australia photo safari concludes in Hobart this morning. Anticipate the excitement of reviewing, editing and sharing your best shots as you preserve this adventure in exhilarating images. A transfer to the airport is included for flights to the mainland and beyond, including the option to extend your time down under by joining Nat Hab's New Zealand Nature Explorer (select departures match up; check dates for details).



Accommodation Details:

The River Suites

Daysy Hill Country Cottages

Chris's Beacon Point

Cradle Mountain Lodge

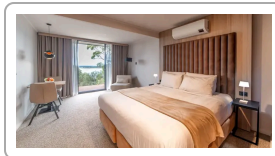
MACq 01 Hotel

Mayfair Hotel

For detailed descriptions, visit nathab.com/asia-adventure-travel/southern-australia-tasmania-photo-expedition/accommodations

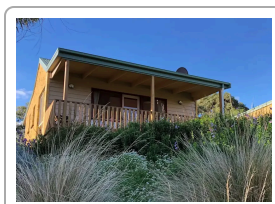
Southern Australia & Tasmania Photo Expedition Accommodations

Capture Diverse Landscapes & Intriguing Wildlife on Our Wide-Ranging Photo Safari



The River Suites

Situated high on a wooded ridge overlooking the ocean and surrounded by lush bird habitat, this nine-room boutique hotel offers expansive views from each guest room's private balcony.



Daysy Hill Country Cottages

With views of Port Campbell Bay and bucolic farmland, these modern cottages have spacious living areas with private decks that overlook landscaped gardens home to abundant birdlife.



Chris's Beacon Point

Set high in the Otway Ranges above the Great Ocean Road, each private villa has a 180-degree view through expansive floor-to-ceiling windows over Skenes Creek and the Bass Strait.

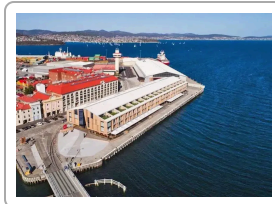


Discovering Our Planet Together



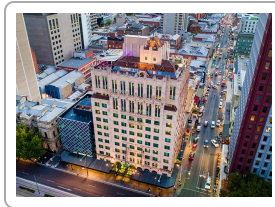
Cradle Mountain Lodge

This lakeside lodge on the edge of Tasmania's Cradle Mountain-Lake St. Clair National Park features private cabins, a cozy fireside lounge, and acclaimed local food and wine.



MACq 01 Hotel

Located in the heart of the historic Hobart waterfront, this unique hotel offers contemporary luxury and cutting-edge design accented with stories of the remarkable people of Tasmania.



Mayfair Hotel

Offering 5-star elegance and a rooftop lounge in the heart of Adelaide, this heritage-listed boutique hotel has been impeccably renovated in a style that's both classic and contemporary.



An Australia Nature Photo Safari Without Peer!

The unique wildlife, dramatic coastlines and diverse landscapes of Southern Australia and Tasmania hold a trove of exciting subjects for nature photographers. We immerse you in these captivating settings, on an itinerary designed to maximize your photography encounters with the Land Down Under at its wildest.

1 Wildlife Photography You Won't Find Anywhere Else

With a plethora of endemic wildlife, Australia offers unique wildlife photography opportunities. And many of the continent's iconic species, from koalas to kangaroos and more uncommon creatures, are found in the south. Since most Australian species are nocturnal, we devote our days to exploring scenic landscapes and turn to wildlife photography around sunrise and sunset, when low light draws out the marsupials, echidnas and other species active after dark.

2 Chartered Flights Maximize Your Time for Photography

Australia is a huge country. That's why we fly between many of our itinerary highlights, rather than waste whole days on long drives or inconvenient connections through cities. Adhering to commercial air schedules and logistics eats up precious safari time. So we exclusively charter planes for our flight legs, avoiding several full travel days, including layovers. You don't want to come this far to spend your time sitting around in transit (although the drives we do include are chosen for their scenic appeal and photography opportunities).

3 A Wide-Ranging Itinerary Including Seven National Parks

Diversity is the appeal on our Southern Australia photo safari, which includes seven different and contrasting national parks: Flinders Chase on Kangaroo Island; Great Otway and Port Campbell on the Great Ocean Road; and in Tasmania, explore Mole Creek Karst, Cradle Mountain-Lake St. Clair, Mount Field and Maria Island national parks.

4 A Distinctive Focus on Nature & Conservation

Australia's grand landscapes and unique wildlife are front and center on our singular itinerary. From the coast of Kangaroo Island to the interior mountains of Tasmania, explore World Heritage Sites, wildlife sanctuaries, internationally protected wetlands and more, learning about efforts to protect these wild habitats and native animals.

5 Just 10 Photographers Per Departure

In a small group, we can seek out more remote places in nature and stay in intimate lodges (sometimes with exclusive occupancy), close to wildlife and conservation sanctuaries. With fewer people, you get a deeper nature experience—not to mention more personal attention and from your Expedition Leader and two local guides.



Discovering Our Planet Together

6 The World's Finest Naturalist Photographer Guides

Natural Habitat Adventures has a well-deserved global reputation for employing the highest-quality guides in the industry. Our photo tours are helmed by Expedition Leaders who are both expert naturalists and highly accomplished nature photographers and instructors, ably coaching guests of varied skill levels on all modes of camera equipment. They have years of experience and training, including resources from WWF's top scientists. You won't find more knowledgeable—or more personable—guides than those who work with us. Our philosophy is simple: a nature adventure is only as good as the guide who leads it, so we provide the very best! **Read our Expedition Leader bios** and traveler comments regarding the quality of our leaders.

7 Our Quality-Value Guarantee Ensures Your Outstanding Photo Expedition

Natural Habitat Adventures is proud to offer our exclusive guarantee that clearly states that we will meet the high expectations we set forth in our promotional materials. To our knowledge, this is the most ambitious guarantee made by any adventure travel company.

8 Feel Good About Your Carbon-Neutral Journey

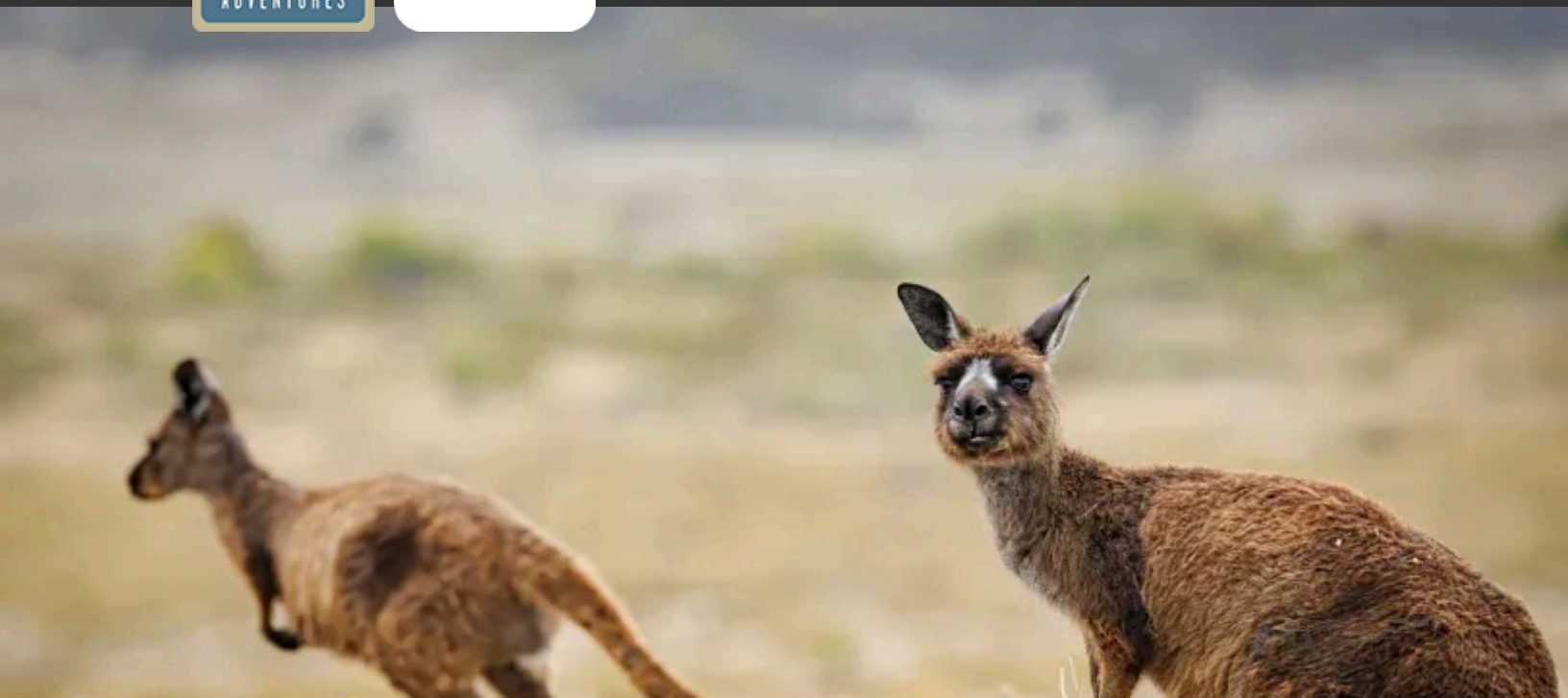
We care deeply about our planet, as we know you do. When you travel with us, the carbon emissions from your trip are 100% offset—including your round-trip flights from home. Natural Habitat Adventures has been the world's first carbon-neutral travel company since 2007.

9 Natural Habitat Adventures Is WWF's Travel Partner

Because of our commitment to environmentally friendly travel, as well as the exceptional quality of our small-group nature adventures, World Wildlife Fund, the world's leading environmental conservation organization, has named Natural Habitat Adventures its worldwide travel partner—a designation that makes us exceedingly proud!



Discovering Our Planet Together



Dates & Pricing Summary:

Prices:
From \$19495

Group Size:
Limited to 10
Travelers

Southern Australia & Tasmania Photo Expedition Dates, Pricing & Info

Capture Diverse Landscapes & Intriguing Wildlife on Our Wide-Ranging Photo Safari

2026 Departures

Departure	Return	Notes
Feb 16, 2026	Mar 1, 2026	\$19495 USD (+internal air)
Mar 5, 2026	Mar 18, 2026	\$19495 USD (+internal air)
Oct 8, 2026	Oct 21, 2026	\$19495 USD (+internal air)
Dec 9, 2026	Dec 22, 2026	\$19495 USD (+internal air)

2027 Departures



Discovering Our Planet Together

Departure	Return	Notes
Feb 7, 2027	Feb 20, 2027	\$19895 USD (+internal air)
Feb 15, 2027	Feb 28, 2027	\$20395 USD (+internal air)
Oct 11, 2027	Oct 24, 2027	\$19895 USD (+internal air)
Dec 10, 2027	Dec 23, 2027	\$19895 USD (+internal air)



Pricing

See <https://nathab.com/asia-adventure-travel/southern-australia-tasmania-photo-expedition/dates-fees> for the latest pricing details.

Included

- **Trip price includes:** Accommodations, services of Nat Hab's professional Expedition Leader, local guides and lodge staff, wildlife and cultural presentations and excursions, private sanctuary tours, private Maria Island boat cruise, all meals from dinner on Day 1 through breakfast on final day, some gratuities, airport transfers for those arriving by air on Day 1 and final day, all activities and entrance fees, all taxes, permits and service fees.
- **Internal air fee includes:** Private charter flight from Adelaide to Kangaroo Island, private charter flight from Kangaroo Island to Warrnambool, and private charter flight from Geelong to Devonport, Tasmania, plus any additional taxes and fees on these flights (these will be listed separately on our invoicing).

Not Included

Travel to and from the start and end point of your trip, most alcoholic beverages, gratuities for Expedition Leaders, passport and visa fees (if any), optional activities, items of a personal nature (phone calls, laundry and internet, etc.), international airline baggage fees, airport and departure taxes (if any), required medical evacuation insurance, optional travel protection insurance.



Important Information About This Trip

Our journey is designed to explore elements of southern Australia that are least populated, most wild, and replete with wildlife and rugged beauty. These are destinations that are difficult to see and interpret on your own, where the expertise of our Expedition Leaders and local guides adds exceptional value to your experience. Steering away from crowds, we explore during quiet hours that allow for seclusion and intimate encounters with nature.

A Note About Travel within Australia

In addition, because towns and populated areas are often far away from the remote destinations we visit, and the nature highlights on our itinerary are often at substantial distances from one another due to the vastness of the country, drive times between activities can be long. We have done our best to minimize long drives, but we want to make sure you get the fullest experience, too. For example, Kangaroo Island is 90 miles long and 35 miles across, with fantastic wildlife viewing and landscapes on the east and south. Many roads are narrow or unpaved, and wildlife is often found near the road, which means we must drive slower than you'd typically expect. Roads in Tasmania are very winding and narrow as well. Please expect some long, taxing drives, and understand that they are a part of nature travel in Australia—while knowing that we have arranged activities and flights to minimize these challenges wherever possible. Many people visit Australia, but only an intrepid few Nat Hab travelers will experience Australia in such a rare and exclusive way.

A Note About Our Accommodations

It is important to understand that Australia is a huge yet sparsely populated country, a remote and isolated continent filled with wildlife and landscapes that are truly unique. Australia is also an English-speaking country, which, aside from some left-side driving and happy accents, feels pretty familiar to life in North America. Yet while it may seem similar to the U.S. and Canada in many ways, the culture around travel is a bit different. Many Australians travel via camper or caravan (trailer) to remote destinations. Those who do stay at ecolodges don't expect the same level of accoutrements, service or maintenance that most North American travelers are accustomed to, even when such lodges are designated as 4- or 5-star accommodations. And since the Covid-19 pandemic, staff turnover at many lodges has been very high, making regular upkeep more difficult. So, please expect a wide range of accommodations, from simple ecolodges to a private tented camp to luxury hotels.

However: There are important reasons we stay where we do! We choose our hotels and ecolodges based on their proximity to nature and wildlife, and the experiences we are able to have from these more remotely located bases far exceed what we could expect if our primary intent was finding the most luxurious accommodation. On this trip, the luxury is in the experience, including access to nature and wildlife, which is why we will choose an ecolodge that's just minutes away from a wild reserve, for example, rather than a luxury hotel that requires a 2-hour drive.

A Note About Our Private Chartered Flights

We have included these not for an extra element of exclusivity, but because they markedly improve our itinerary. Chartered flights allow us to provide you much more time in nature, rather than being beholden to the timetables and locations of commercial flights. By chartering our own planes, we can get where we need to go when we *want* to go. No big city connections, no layovers...just more time with wildlife, in the peace of nature, for you. You've come this far to experience the wild wonders of Australia...and we want to make sure you spend as much of your precious time doing that as possible!

In sum: Many people visit Australia, but only an intrepid few Nat Hab travelers will experience Australia in such a rare and exclusive way!



Mandatory Insurance

Since the areas we travel to are remote and wild (that's why we go there!), we require that all guests have, at minimum, medical evacuation insurance for this program. This is for the safety of all guests. We require that your chosen independent insurance plan includes at least \$250,000 in medical evacuation coverage.

To protect your investment and to provide peace of mind while you travel, we also strongly recommend purchasing comprehensive travel insurance. Plans may cover everything from medical treatment to trip cancellations and delays and lost luggage. Please contact our office if you would like more information about the medical evacuation and comprehensive travel insurance policies we offer by calling 800-543-8917.

Getting There & Getting Home

This trip begins in Adelaide, South Australia, and ends in Hobart, Tasmania. Because this is a long international journey with a significant time difference, **we recommend that you arrive at least one day prior to Day 1** to rest from your travels and begin the trip refreshed. For guests who come in early, recommended hotels will be included in your pre-departure materials.

If you plan to arrive on Day 1, you must arrive in Adelaide by 4 pm in order to join your group for the orientation dinner. Guests who wish to participate in the optional, no-cost tour of the Adelaide Botanic Gardens should plan to arrive no later than 1 pm on Day 1 and will meet their Expedition Leader at 3 pm in the hotel lobby.

You may depart Hobart at any time on the final day.

Our Natural Habitat Adventures Travel Desk can best assist with your travel reservations, as our staff is familiar with the specific requirements of this program and can help arrange the most efficient itinerary. Please call us at 800-543-8917. While we offer the best available rates to us on airfare and additional nights' accommodations, you may occasionally find special web rates or lower fares online.



Discovering Our Planet Together

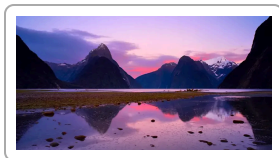


Extension Details:

New Zealand Nature Explorer
\$14995

Southern Australia & Tasmania Photo Expedition Extensions

Capture Diverse Landscapes & Intriguing Wildlife on Our Wide-Ranging Photo Safari



New Zealand Nature Explorer

Discover New Zealand's celebrated natural beauty as we combine rare wildlife encounters with the South Island's stunning mountains, glaciers, fjords, coastal rainforest, remote islands and legendary hospitality.

\$14995 (+air)



Natural Habitat & WWF: Discovering Our Planet Together

Natural Habitat Adventures • PO Box 3065 • Boulder, CO USA 80307

USA & Canada: 800-543-8917 • International: 303-449-3711

© 2026 Natural Habitat Adventures

WWF's membership travel program is operated by Natural Habitat Adventures (Nat Hab). To date, Nat Hab has provided more than \$6 million in support of WWF's mission and will continue to give 1% of gross sales plus \$175,000 annually through 2028. WWF® and ©1986 Panda Symbol are owned by WWF. All rights reserved.