



Discovering Our Planet Together



# Secluded Botswana Photo Expedition

*Matchless Wildlife Encounters on an Exclusive Small-Group Photography Safari*



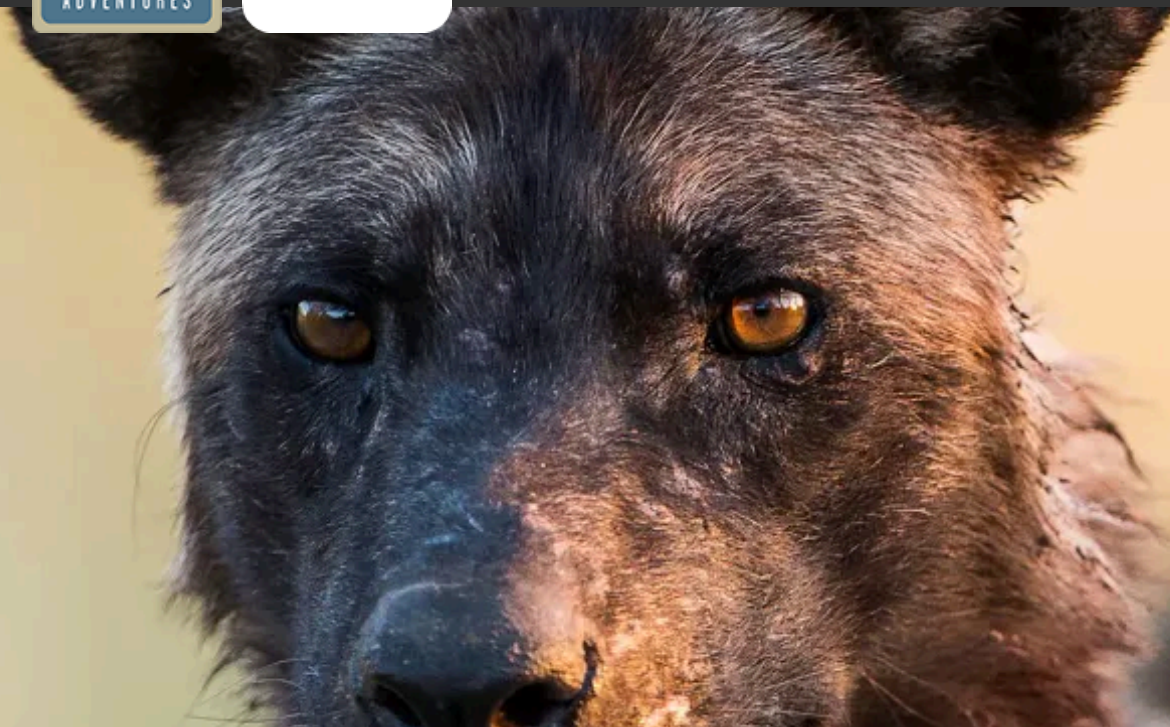
## Table of Contents:

---

<b>Trip Overview</b> .....	<b>3</b>
<b>Trip Itinerary</b> .....	<b>4</b>
<b>Trip Accommodations</b> .....	<b>7</b>
<b>What Makes Nat Hab Different?</b> .....	<b>9</b>
<b>Dates &amp; Pricing Information</b> .....	<b>11</b>
<b>Trip Extensions</b> .....	<b>15</b>



Discovering Our Planet Together



## Trip Details:

**Days**  
12 Days /  
Jun-Oct

**Price**  
From  
\$21995  
(+Air)

# Secluded Botswana Photo Expedition

## Matchless Wildlife Encounters on an Exclusive Small-Group Photography Safari

Botswana is an epic safari destination for nature photographers. Boasting an extraordinary amount and diversity of wildlife, Botswana's celebrated reserves offer an encounter with genuine African wilderness far from crowds. We take advantage of classic tented bush camps on remote private reserves that enhance your proximity to abundant wildlife. Head out at sunrise to capture shots of leopard and cheetah hunting in the cool morning air on the Linyanti and Gomoti savannas. Photograph buffalo, giraffe, zebra and antelope at watering holes that sustain life on the arid plains. In the marshes of the Okavango Delta, witness a dazzling array of birds, water-adapted game, and lurking crocodiles. Along the Chobe River, photograph gregarious hippos and elephant herds massing to drink. Secluded Botswana will exceed every wildlife photographer's wildest dreams!

## Trip Highlights

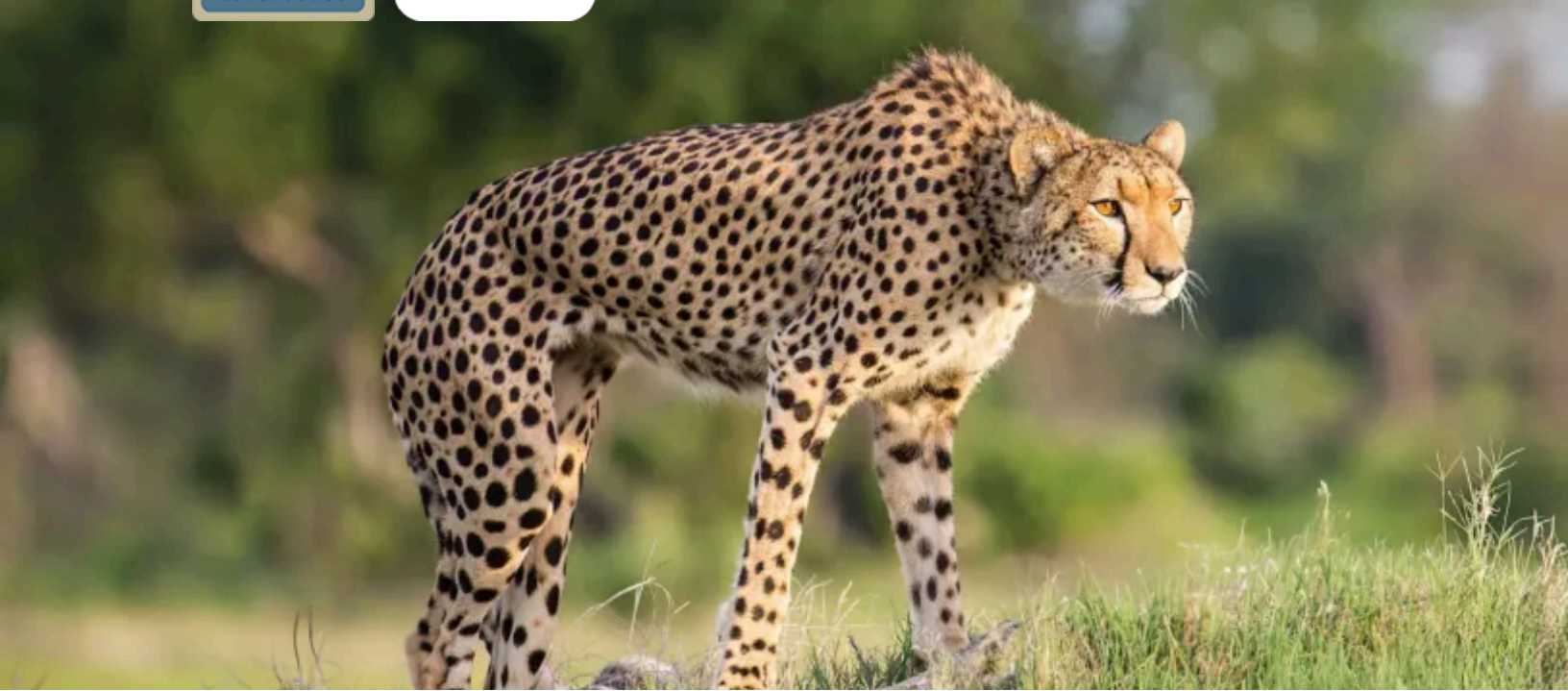
**You won't find a better supported, more in-depth photography adventure designed for maximum wildlife encounters—for just eight guests, with zero crowds!**

**Our own luxury safari camps, isolated on remote private reserves, offer vintage ambience, unsurpassed comfort and astounding proximity to wildlife**

**Led by top naturalist-photographer guides, capture shots of big cats, rhinos, huge elephant herds and more, on 4x4 drives and a private doors-off helicopter safari**



Discovering Our Planet Together



### Itinerary At A Glance

**Day 1**

Livingstone, Zambia—Zambezi River Cruise

**Day 2**

Mosi-oa-Tunya National Park—Victoria Falls / Village Visit / Rhino Walk

**Days 3 - 5**

Chobe National Park, Botswana / Linyanti Private Reserve

**Days 6 - 8**

Linyanti / Okavango Delta—Private Helicopter Safari

**Days 9 - 11**

Southeast Okavango—Santawani Private Concession—Predator Researcher Visit

**Day 12**

Maun / Depart

## Secluded Botswana Photo Expedition Itinerary

Matchless Wildlife Encounters on an Exclusive Small-Group Photography Safari

### Day 1: Livingstone, Zambia—Zambezi River Cruise

Our Botswana photo safari begins just over the border in Livingstone, Zambia, where you're met on arrival and transferred to Toka Leya to spend the night. This luxury camp sits in a prime location overlooking the mighty Zambezi River upriver from Victoria Falls, surrounded by Mosi-oa-Tunya National Park, a UNESCO World Heritage Site. The park's name means "The Smoke that Thunders," and it's an apt moniker, as we see mist clouds rising off the falls from miles away. Great photo opportunities are on offer right away during a classic sunset cruise, as we look for hippos and crocodiles on the riverbanks. Afterward, join our Expedition Leader for a welcome dinner.





## Discovering Our Planet Together

### **Day 2: Mosi-oa-Tunya National Park—Victoria Falls / Village Visit / Rhino Walk**

Our focus today is Mosi-oa-Tunya National Park with its centerpiece, Victoria Falls, which we explore on a guided walking tour along the rim this morning. The world's most astounding cataract, Victoria Falls spans more than a mile and plummets 350 feet into the Zambezi Gorge below, producing so much spray that the intense moisture has created a rainforest microecosystem on the rim. A network of walkways offers varying viewpoints over the falls, with exciting photography opportunities.

Next, we visit a nearby village to learn about the culture and daily life of the local people. Then, we head farther into the national park to look for white rhinos—our best chance to see them up close. This small but growing population currently numbers 10 individuals including calves. They're carefully managed and protected from poaching by around-the-clock armed guards. Because predators do not live in the park, we approach the rhinos via a short walk through the diverse landscape, a combination of tall riverine forests, woodland and open grasslands. We're likely to see elephants, giraffes, baboons, plentiful birds and zebra. But the true prize is encountering the placid rhinos, endangered icons of the African wild. During the excursion, we follow the rhinos' movements and observe their behavior as we learn about the critical conservation measures striving to bring this population — and the entire species — back from the brink.

### **Days 3 - 5: Chobe National Park, Botswana / Linyanti Private Reserve**

Traveling by road, we cross the Chobe River into Botswana's Chobe National Park, famed for its vast elephant herds—a population that exceeds 70,000. On a private boat cruise down the river and its myriad channels, we sometimes see several hundred elephants in a single day, with excellent chances for close-up photos. Waterbirds abound, including herons and storks, and hippos and crocodiles are on display along the muddy banks. Keep an eye out for egrets perched on the backs of elephants cooling off in the water—they make entertaining subjects.

This afternoon, fly to the private Linyanti Wildlife Reserve, some of Africa's most dramatic big-game country. Its tree-dotted plains are home to lion, leopard, spotted hyena and African wild dog, as well as enormous elephant herds. We'll expect to encounter wildlife in amazing proximity along the Linyanti River and surrounding environs, capturing thrilling close-ups of elephants, hippos and numerous birds. In the evenings, relax at our secluded camp, where well-appointed walk-in tents evoke an earlier romantic era of safari travel. Through the thorny acacia branches we see more stars than we ever dreamed of, scattered across an impossibly black sky.



### **Days 6 - 8: Linyanti / Okavango Delta—Private Helicopter Safari**

After a final wildlife drive in the wilds of Linyanti, transfer by light aircraft to the Okavango Delta. Earth's largest inland water system, the delta's headwaters lie in the western highlands of Angola. They join with other rivers in Namibia and Botswana to meet the Kalahari Desert, creating a green oasis that sprawls amid the sands and dry savanna. When rains are typical and floodwaters are able to rise, it is a vast network of waterways and wetlands, and the Okavango is home to a profuse collection of wildlife and lush vegetation.

Pelo Camp is a dream base for wildlife photographers. Located in the heart of the delta, it's surrounded by a maze of canals and lagoons that sustain a profusion of wildlife. The wetlands and islands are home to many rare birds, and we may see wattled cranes, Pel's fishing owls, jacanas, rails, crakes and moorhens. Following the reed-fringed channels, we may also capture shots of water-adapted antelope such as red lechwe browsing in the grasses. Depending upon water levels and wildlife movement, explore the constantly shifting marsh by *mokoro*, a traditional poled dugout canoe, offering a chance to photograph wildlife at eye level in complete quiet. During our stay at Jacana, we also capture aerial images from an exhilarating doors-off helicopter flight over the watery maze below, with an unimpeded view for each guest. We also hope to do a guided walk, for an intimate perspective on the small wonders that also surround us. (Please note that water levels and activities may vary based on actual amounts of anticipated annual rainfall.)

### **Days 9 - 11: Southeast Okavango—Santawani Private Concession—Predator Researcher Visit**

This morning we fly by light aircraft to Gomoti Tented Camp in the heart of the Santawani Concession, a private reserve encompassing nearly 15,000 acres in the southeast corner of the Okavango Delta. The aerial transfer offers exhilarating photo opportunities of the landscape below. While some areas of the delta are permanently flooded, other habitats create a mosaic of varied landscapes, including drier regions like the area that surrounds our camp. A mix of dense riverine woodland, open savanna and acacia scrub provide ample food for a large array of browsers and grazing species, as well as predators including cheetah, leopard, lion and rare wild dog.

The Gomoti River is a year-round lifeline for animals, while inland waterholes also sustain them during the dry season. The diverse range of habitats makes the Gomoti region ideal for all-day photography excursions, including traditional 4x4 wildlife drives, picnic lunches and night drives in search of nocturnal species. During our stay in Santawani, we're joined by a local researcher to learn about studies on the wide range of predators in the area, including research projects on wild dog, cheetah and leopard. After each exhilarating day, our intimate private camp offers a tremendous sense of seclusion in the wilderness.

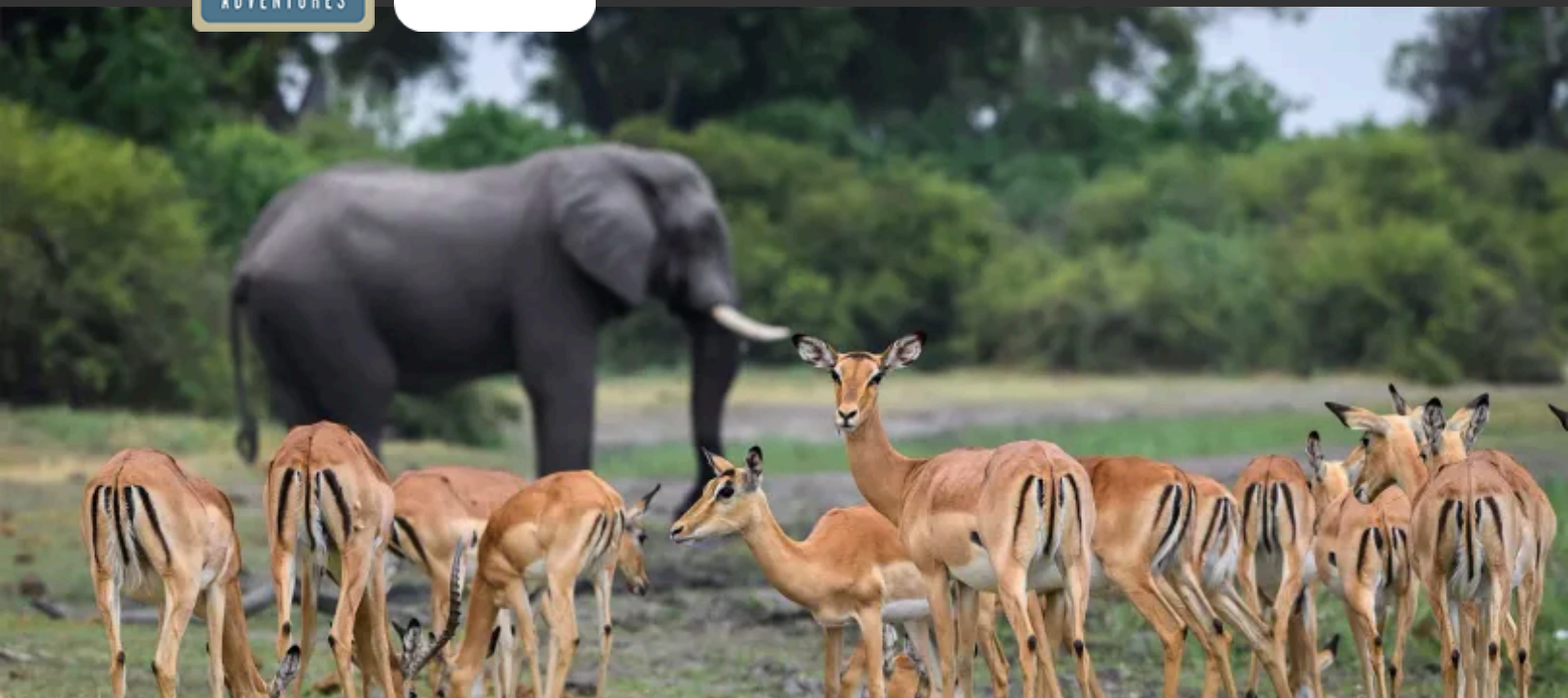
### **Day 12: Maun / Depart**

Our Botswana photo safari comes to a close when we depart by air for Maun, where we connect with homeward flights or continue with onward extensions.

**Click here** to view the seasonal variations of weather and wildlife viewing in Botswana.



Discovering Our Planet Together



**Accommodation Details:**

**Toka Leya**

**Nat Hab's Linyanti Camp–  
Linyanti Private Reserve**

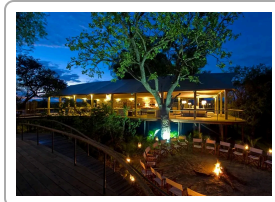
**Nat Hab's Pelo Camp–Heart of  
the Delta**

**Nat Hab's Gomoti Camp–  
Okavango South**

For detailed descriptions, visit  
[nathab.com/africa/secluded-botswana-photo-expedition/accommodations](http://nathab.com/africa/secluded-botswana-photo-expedition/accommodations)

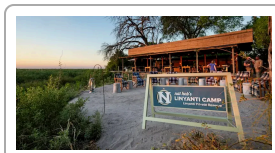
## Secluded Botswana Photo Expedition Accommodations

Matchless Wildlife Encounters on an Exclusive Small-Group Photography Safari



### Toka Leya

Set on the Zambezi River near Victoria Falls, Toka Leya Camp offers refined comfort and eco-conscious design amid sweeping views of Zambia's wildlife and wilderness.



### Nat Hab's Linyanti Camp–Linyanti Private Reserve

Shaded by knob thorn acacias, Nat Hab's Linyanti Camp features spacious tents offering sweeping views of the Linyanti waterways and wildlife in a secluded setting.



### Nat Hab's Pelo Camp–Heart of the Delta

Typically accessed by boat, Nat Hab's Pelo Camp offers total seclusion, abundant wildlife and private tented comfort on a heart-shaped island in the Okavango Delta.



## Discovering Our Planet Together



### **Nat Hab's Gomoti Camp-Okavango South**

Set on the edge of the Okavango Delta and reserved exclusively for our use, this camp features raised en suite tents and lounge overlooking a watering hole frequented by wildlife.



## Discover Why This Photography Safari Is Much Better Than Most

For the ultimate Africa photo safari, Botswana has few rivals. More than 45% of the country is protected within national parks, game reserves and private concessions. Visitor numbers are limited. And animals are prolific in Botswana's varied ecosystems, allowing for exceptional close-up photography. Yet not every safari operator takes full advantage of these elements the way we do. Here's why you'll get better photos when you travel with Nat Hab:

- 1 Maximum Group Size Just 8 Travelers**

Our exceptionally small group means quiet, intimate encounters with wildlife. You won't have to jockey for position to get great photos. And you'll have the close attention and personalized guidance from our Photo Expedition Leader every step of the way.
- 2 An Open "Window" Seat for Every Traveler**

Nothing is more important on a photo safari than access to the edge of the vehicle for unimpeded shots. The state-of-the-art vehicles we charter have open sides and 10 cushioned passenger seats—one in front next to the driver, followed by three rows of three seats each—though we limit our capacity to just 4 travelers in each vehicle on wildlife drives, for maximum viewing, comfort and photo opportunities. This means plenty of room for all your gear, too.
- 3 An Outstanding Itinerary for Wildlife Photography**

Our itinerary features a diverse mix of habitats and secluded photo opportunities from private reserves where crowds are non-existent – meaning you'll see more species, in quieter settings, at closer range.
- 4 Helicopter Flightseeing for Aerial Imagery**

Capture shots and video of wildlife on the move from on high during an exhilarating doors-off helicopter flight over the Okavango Delta and Gomoti River, a year-round lifeline for a wide array of animals
- 5 Chartered Flights Maximize Your Time on Safari**

Chartered flights by light aircraft (rather than long drives over rough dirt roads) between most safari locations lets you spend more time actually taking photos on safari, rather than in tiring transit..



6

### **Maximize Your Photo Opportunities on Private Reserves**

Rather than staying in more heavily visited national parks, we concentrate on private reserves where access and visitor numbers are strictly limited. Our small, secluded camps in the Linyanti and Moremi regions are set amid a profusion of wildlife. Private reserves also allow us to shoot at sunset when the light is best—other groups staying in national parks must be back at camp by sunset due to park regulations. Likewise, we are allowed to take guided bush walks, not permitted on public lands, for a more intimate perspective on smaller subjects.

7

### **The World's Finest Naturalist-Photographer Guides**

At the helm of our safaris are some of the most highly certified and experienced naturalist guides in Africa. They are also professional photographers and instructors, offering personalized attention and coaching every step of the way—no matter your ability level. With additional training and resources provided by WWF's top scientists, our guides are second to none. **See Photo Expedition Leader bios** and traveler comments regarding the quality of our leaders.

8

### **Our Quality-Value Guarantee Ensures Your Superior Botswana Photo Safari**

With Natural Habitat Photo Expeditions you receive our exclusive guarantee, which clearly states that we will meet the lofty expectations we set in our promotional materials. To our knowledge, this is the most ambitious guarantee made by any adventure travel company.

9

### **Feel Good About the Way You Travel;**

We care deeply about our planet, just as you do. When you travel with us, the carbon emissions from your trip are 100% offset. Natural Habitat Adventures is the world's first carbon-neutral travel company.

10

### **Natural Habitat Adventures is WWF's Travel Partner**

Because of our commitment to environmentally friendly travel, as well as the exceptional quality of our adventures, World Wildlife Fund—the world's leading environmental conservation organization—has named Natural Habitat Adventures as its worldwide travel partner, a designation that makes us exceedingly proud!



Discovering Our Planet Together



Dates & Pricing Summary:

Prices: From \$21995 (+Air)

Group Size: Limited to 8 Travelers

# Secluded Botswana Photo Expedition Dates, Pricing & Info

Matchless Wildlife Encounters on an Exclusive Small-Group Photography Safari

## 2026 Departures

Departure	Return	Notes
Jun 28, 2026	Jul 9, 2026	\$21995 USD (+internal air)
Jul 28, 2026	Aug 8, 2026	\$21995 USD (+internal air)
Aug 24, 2026	Sep 4, 2026	\$21995 USD (+internal air)
Sep 14, 2026	Sep 25, 2026	\$21995 USD (+internal air)
Oct 14, 2026	Oct 25, 2026	\$21995 USD (+internal air)

## 2027 Departures



# Discovering Our Planet Together

## Dates & Pricing Summary:

**Prices:**  
From \$21995  
(+Air)

**Group Size:**  
Limited to 8  
Travelers

Departure	Return	Notes
Jun 27, 2027	Jul 8, 2027	\$23495 USD (+internal air)
Jul 27, 2027	Aug 7, 2027	\$23495 USD (+internal air)
Aug 23, 2027	Sep 3, 2027	\$23495 USD (+internal air)
Sep 13, 2027	Sep 24, 2027	\$23495 USD (+internal air)
Oct 13, 2027	Oct 24, 2027	\$23495 USD (+internal air)

## 2028 Departures

Departure	Return	Notes
! Prices and dates not confirmed for 2028		
Jun 28, 2028	Jul 9, 2028	\$23495 USD (+internal air)
Jul 28, 2028	Aug 8, 2028	\$23495 USD (+internal air)
Aug 24, 2028	Sep 4, 2028	\$23495 USD (+internal air)
Sep 14, 2028	Sep 25, 2028	\$23495 USD (+internal air)
Oct 14, 2028	Oct 25, 2028	\$23495 USD (+internal air)

## Pricing

See <https://nathab.com/africa/secluded-botswana-photo-expedition/dates-fees> for the latest pricing details.



## Discovering Our Planet Together

### Included

**Trip price includes:** Accommodations in luxury safari camps, services of Nat Hab's professional Expedition Leader, local guides and camp staff, premier open-sided 4-wheel drive Land Cruisers or Rovers, private Chobe boat cruise, visit with predator researcher at Gomoti Camp, all meals from dinner on Day 1 through breakfast on final day, some alcoholic beverages, some gratuities, airport transfers on Day 1 and final day, all activities and entrance fees, all taxes, permits and service fees.

**Private helicopter flight** over the Okavango Delta, plus additional aircraft weight allowance for photo gear.

**Internal air cost includes:** All light aircraft flights within the itinerary (this will be listed separately on our invoicing).

### Not Included

Travel to and from the start and end point of your trip, some alcoholic beverages, some gratuities, passport and visa fees (if any), optional activities, items of a personal nature (phone calls, laundry, etc.), airline baggage fees, airport and departure taxes (if any), required medical evacuation insurance, optional travel protection insurance.

### Important Information About This Trip

This photo safari includes Botswana's best and most remote wildlife locales while staying in comfortable bush accommodations. Each is small and intimate (usually accommodating only our small group of eight guests) with full electricity and private bathrooms with hot and cold running water. The accommodations are a highlight of the trip, following on the amazing wildlife experiences discovered by our Expedition Leaders throughout the day. On these trips, changes to the itinerary may occur in order to take advantage of conditions unique to the season and/or accommodate unexpected changes in water levels; therefore, itineraries may need to be rerouted or redesigned without notice.

### Mandatory Insurance

Since the areas we travel to on this trip are remote and wild (that's why we go there!), we require medical evacuation insurance for our guests' safety. If you decline the medical evacuation insurance coverage offered by Natural Habitat, we request that you send us documentation of the independent coverage you have selected. We will add the cost of a medical evacuation policy to your tour invoice until you provide our office with proof of coverage including your insurance company's name, contact number and your individual policy number. Thank you for understanding that our policy exists exclusively in the interest of our guests' safety.



## Getting There & Getting Home

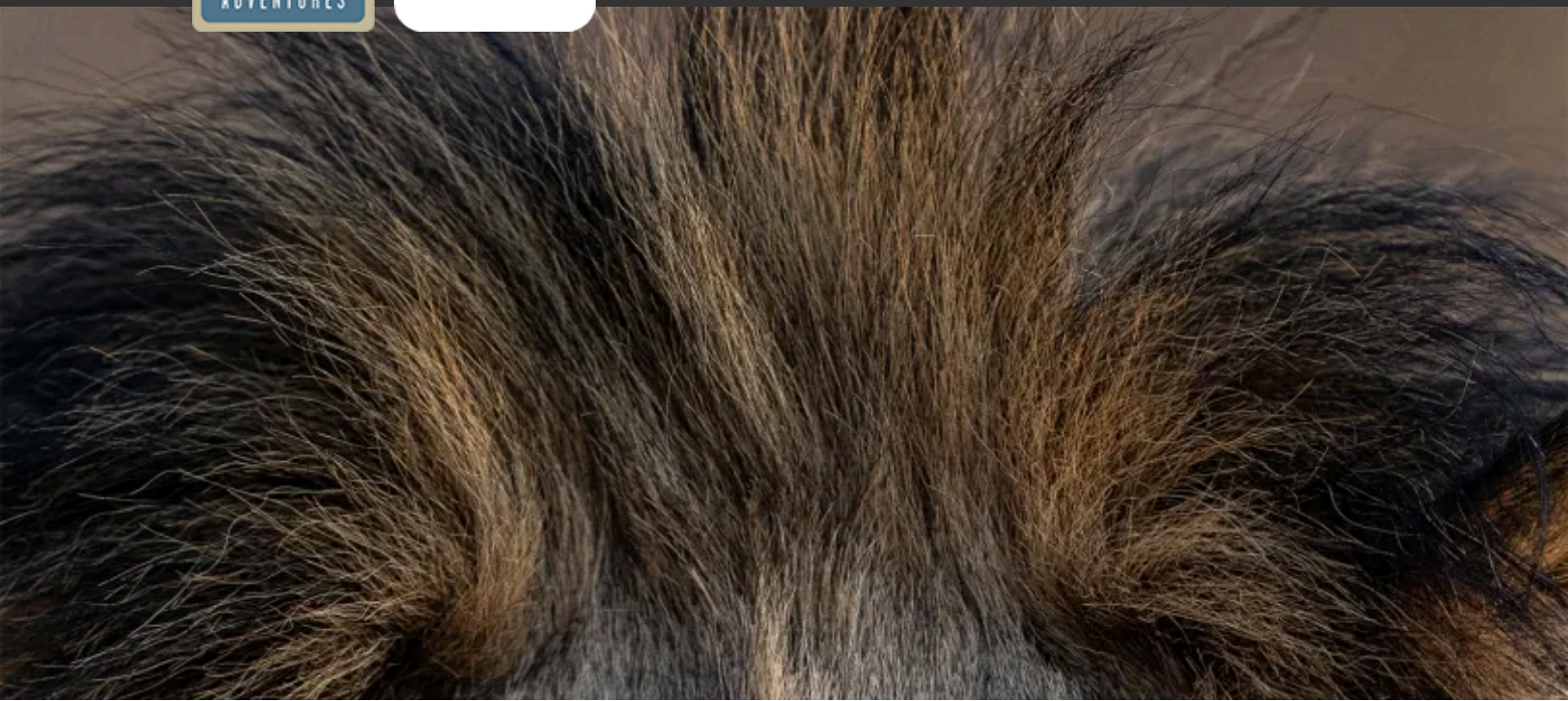
This trip begins in Livingstone, Zambia, and ends in Maun, Botswana. Because this is a long international journey, **we recommend that you arrive at least one night prior to Day 1** to rest from your travels and begin the trip refreshed. For guests who come in early, recommended hotels will be included in your pre-departure materials. You must arrive in Livingstone by 1 pm on Day 1 in order to join the group for the first scheduled activities.

**You may depart Maun anytime after 1:30 pm on the final day.**

Our Natural Habitat Adventures Travel Desk can best assist with your travel reservations, as our staff is familiar with the specific requirements of this program and can help arrange the most efficient itinerary. Please call us at 800-543-8917. While we offer the best available rates to us on airfare and additional nights' accommodations, you may occasionally find special web rates or lower fares online.



Discovering Our Planet Together



**Extension Details:**

**Cape Town Extension**  
\$2495

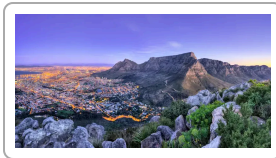
**Wild Cape Coast Extension**  
\$3595

**Namibia Desert Extension**  
\$6395

**Sabi Sand Extension**  
\$5495

## Secluded Botswana Photo Expedition Extensions

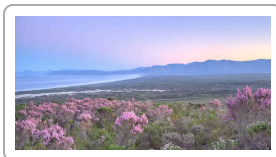
Matchless Wildlife Encounters on an Exclusive Small-Group Photography Safari



### Cape Town Extension

Discover one of the world's most entrancing cities and its natural environs. Survey the view from Table Mountain, explore the Cape Peninsula, visit Cape Point Nature Reserve, see penguins at Boulders Beach, and tour the Winelands.

**\$2495**



### Wild Cape Coast Extension

From our luxury ecolodge base on the Grootbos Private Nature Reserve, explore pristine coastal wilderness including the rare Cape Floral plant kingdom and Stony Point penguin colony.

**\$3595**



### Namibia Desert Extension

Namibia's towering sand dunes, arid canyons and desert-adapted wildlife offer a distinct contrast to other southern Africa safari destinations—look for endangered black rhino, desert elephant and more.

**\$6395 (+air)**



## Discovering Our Planet Together



### **Sabi Sand Extension**

An exclusive safari experience on a 160,000-acre private reserve that's one of Africa's best places to spot the famous Big Five—choose among intimate luxury camps and secluded boutique lodges.

**\$5495**



**Natural Habitat & WWF: Discovering Our Planet Together**

Natural Habitat Adventures • PO Box 3065 • Boulder, CO USA 80307

USA & Canada: 800-543-8917 • International: 303-449-3711

© 2026 Natural Habitat Adventures

WWF's membership travel program is operated by Natural Habitat Adventures (Nat Hab). To date, Nat Hab has provided more than \$6 million in support of WWF's mission and will continue to give 1% of gross sales plus \$175,000 annually through 2028. WWF® and ©1986 Panda Symbol are owned by WWF. All rights reserved.