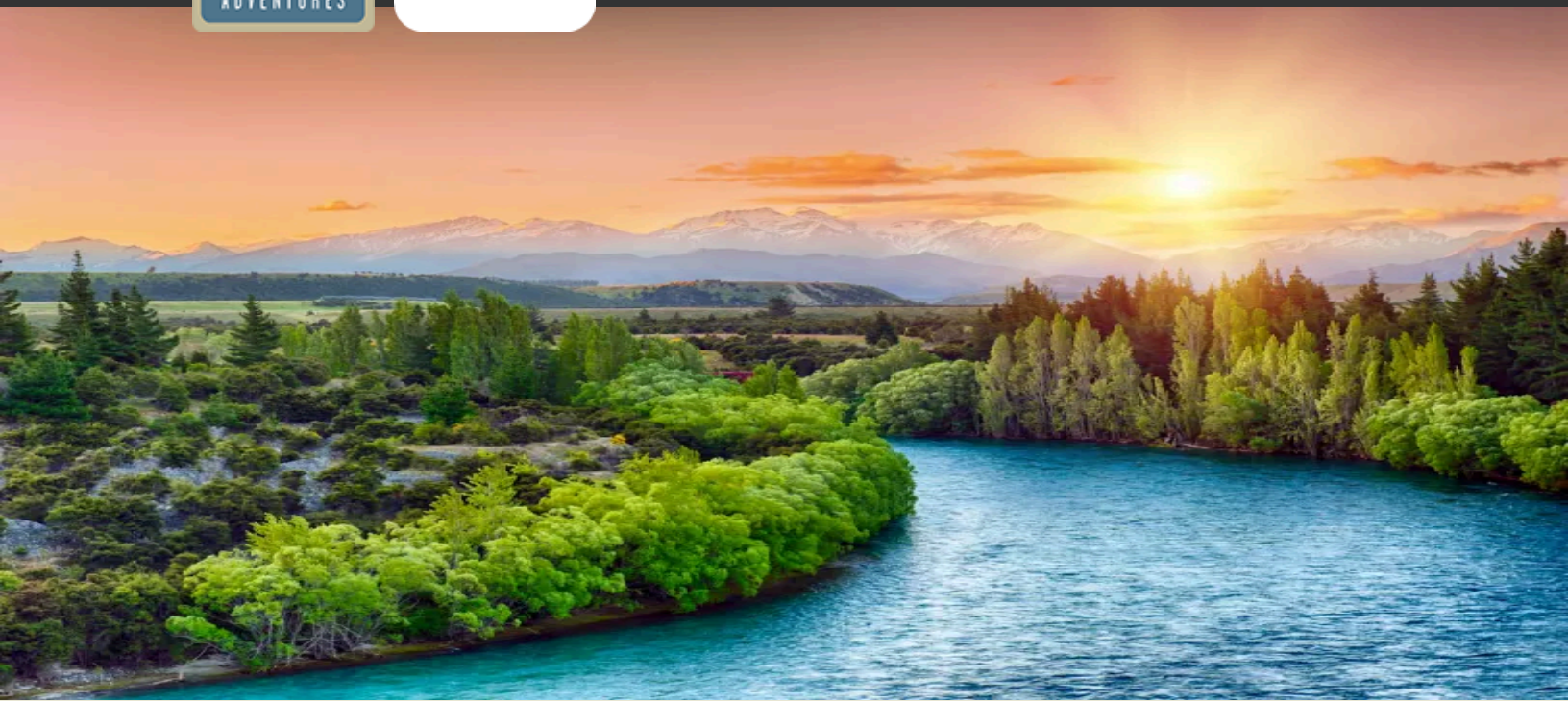




Discovering Our Planet Together



New Zealand Nature Explorer

A Small-Group Immersion in the Scenic Splendors of New Zealand's South Island



Discovering Our Planet Together

Table of Contents:

Trip Overview	3
Trip Itinerary	4
Trip Accommodations	12
What Makes Nat Hab Different?	14
Dates & Pricing Information	16
Trip Extensions	24



Discovering Our Planet Together



Trip Details:

Days

12 Days /
Oct–Mar

Price

From
\$14995
(+Air)

New Zealand Nature Explorer

A Small-Group Immersion in the Scenic Splendors of New Zealand's South Island

Among travelers who covet spectacular natural scenery, New Zealand is legendary. Our focus is the South Island, a land of topographic extremes, from seaside rainforests and sapphire lakes to ice-crowned peaks, active glaciers and frigid fjords. On a dramatic itinerary that winds from alpine heights to Pacific shores, we are immersed in nature at its showiest. Explore lush mountains and deep gorges in Fiordland National Park, fly over the waterfalls and peaks of Milford Sound by private helicopter, hike on remote Mou Waho Island in Lake Wanaka, and walk among towering ferns to wild Monro Beach. Within these diverse landscapes, we find rare and intriguing creatures such as the flightless buff weka, yellow-eyed penguins and the famous brown kiwi. We also experience the hospitality New Zealanders are renowned for as we meet sheep farmers, learn about Maori culture, and find a bit of Scottish heritage in the South Pacific.

Trip Highlights

From secluded ecolodges, search for rare birds on rainforest hikes, paddle a kayak on a mountain lake, and stargaze beneath some of the darkest skies on Earth

On little-visited Stewart Island, a Dark Sky Sanctuary, look for elusive kiwis on a guided night walk, and view breeding seabirds on a private boat excursion

Aboard our chartered boat, cruise this glacial-carved fjord where waterfalls plummet from sheer peaks, then fly over the sound and mountains to Queenstown



Discovering Our Planet Together



Itinerary At A Glance

Day 1

Dunedin, New Zealand / Otago Peninsula Private Tour

Day 2

Catlins / Invercargill / Stewart Island

Day 3

Stewart Island / Private Boat Trip & Ulva Island Guided Walk

Day 4

Riverton / Te Anau

Day 5

Fiordland National Park / Milford Sound Private Cruise / Scenic Helicopter Flight / Wanaka—Private Haka Experience

Day 6

Lake Wanaka—Private Boat Tour to Mou Waho Island

Day 7

Haast Pass / Lake Moeraki

New Zealand Nature Explorer Itinerary

A Small-Group Immersion in the Scenic Splendors of New Zealand's South Island

Day 1: Dunedin, New Zealand / Otago Peninsula Private Tour

Our New Zealand nature adventure starts in Dunedin. Dunedin boomed during a series of gold rushes in the 19th century and today remains one of New Zealand's most important commercial centers. Gather for a group orientation at 2 pm, then set off with our Expedition Leader on a tour to view albatross and visit the Otago Peninsula Eco Restoration Alliance, formerly known as Penguin Place, a private conservation reserve and rehabilitation center for endangered yellow-eyed penguins. The reserve was founded in 1985 when just eight breeding pairs inhabited the property. This penguin species, found only in New Zealand, is one of the rarest in the world, with fewer than 4,000 remaining. This evening, we gather for a welcome dinner at Larnach Castle, built in 1871.





Itinerary At A Glance

Day 8

Exploring Lake Moeraki & Monro Beach

Day 9

Westland Tai Poutini National Park / Arthur's Pass

Day 10

Arthur's Pass—Hiking & Kayaking on Lake Pearson

Day 11

Arthur's Pass / Christchurch—City Tour

Day 12

Christchurch / Depart

Day 2: Catlins / Invercargill / Stewart Island

This morning we set off through the little-visited Catlins, a rugged coastal region that is one of the most sparsely populated areas of New Zealand. Hemmed by a rockbound shoreline, this windswept region holds lush woodlands, a petrified forest, hidden lakes and cascading waterfalls. Large tracts of rainforest are filled with native flora including tree ferns, rata, kahikatea, miro, kamaha and silver beech, while the coastline is defined by stark cliffs, sea caves, rock stacks and sandy bays. Wildlife is plentiful—keep an eye out for seabirds and forest-dwelling birds including tui, bellbird, fantail and native pigeon, plus New Zealand sea lions, fur seals and Hector's dolphins offshore.

Reaching Invercargill, New Zealand's southernmost city, we board a short flight this afternoon to idyllic Stewart Island, 19 miles offshore, where we spend two nights. Much of this rugged granite island lies within Rakiura National Park, whose Maori name means "Land of Glowing Skies." Its rainforests shelter many native plants, which we discover on nature walks through the unique habitat. The island is a haven for birds, and we listen for the songs of parakeets, bellbirds, tui and kaka. And of course we'll hope to spy the elusive brown kiwi on a guided night walk—Stewart Island is one of the best places in New Zealand to seek them. And if we're very lucky, we might catch a glimpse of the aurora australis in the southern sky.

Day 3: Stewart Island / Private Boat Trip & Ulva Island Guided Walk

On a private boat excursion off Stewart Island this morning, view the multitudes of pelagic seabirds that live and breed in these coastal waters. We expect to see a great variety at close range—albatrosses, shearwaters, shags, skua and several penguin species including yellow-eyed, little and Fiordland crested. Take an intimate nature walk with a local naturalist who has worked closely with Stewart Island native and birder extraordinaire Ulva Goodwillie, the namesake of the Ulva Island sanctuary.

On Ulva, just a short boat ride away from neighboring Stewart Island, explore pristine trails and beaches, observing rare bird species that no longer exist on the main islands, such as the South Island saddleback. Ulva has been carefully managed to be free of invasive predators and pests since 1997, allowing native wildlife to flourish as it did prior to the arrival of introduced species. The small island has also never been logged, offering visitors an immersion in an untouched rainforest that provides shelter for Ulva's healthy bird population.



Day 4: Riverton / Te Anau

After a short flight back to the mainland from Riverton, continue this morning to Te Anau, following the Southern Scenic Route that connects the rugged south coast with the eastern edge of Fiordland National Park. Te Anau is a picturesque village on Lake Te Anau, the largest of New Zealand's southern glacial lakes, and the gateway to the national park. Backdropped by the Kepler and Murchison ranges, most of Lake Te Anau lies within the boundaries of Fiordland National Park and the Te Wahipounamu World Heritage Site. This afternoon we visit Te Anau Bird Sanctuary to see the rare flightless takahe, an endemic bird with blue-black and olive-green plumage and a large red bill. The sanctuary is one of two that have been integral to the success of New Zealand's Takahe Recovery Program, which has pioneered conservation techniques to bring this endangered bird back from the very brink of extinction. As of 2023, about 500 are in existence. The sanctuary is also home to indigenous kaka (a mountain parrot species), parakeets, pateke (brown teal), tui, wood pigeon and more.



Discovering Our Planet Together

Day 5: Fiordland National Park / Milford Sound Private Cruise / Scenic Helicopter Flight / Wanaka—Private Haka Experience

This morning, one of the world's most scenic drives awaits: follow the winding Milford Road as we travel through Fiordland National Park to the sea. It's no wonder this mythical-looking land of pointed peaks and sheer rock walls, high waterfalls and drifting mists was chosen as one of the main settings for the film adaptation of J.R.R. Tolkien's *The Fellowship of the Ring*. Once we reach the head of the fjord that is Milford Sound, board a private chartered boat for a scenic cruise around this glacier-carved wonderland. As we ply the steep-walled inlets that wind beneath a perpetual cap of snow and ice, watch ribbons of water plummet from above, and look for fur seals, crested penguins and bottlenose dolphins. If we're lucky, the mists will clear enough to reveal pyramid-shaped Mitre Peak rising two-thirds of a mile straight out of the sea. Our naturalist Expedition Leader, an expert on New Zealand wildlife and geography, interprets all we see.

After our cruise (weather conditions permitting), board a chartered helicopter for a spectacular flight over the Southern Alps to Queenstown. As we lift off, view Milford Sound from the air, with multiple waterfalls pouring down the near-vertical peaks surrounding the fjord. We'll get an aerial vantage on alpine lakes, ice fields and rainforests and make three secluded landings, which may include a remote west coast beach, a glacier and a lake.

From Queenstown it's less than hour to Wanaka, as more scenic drama unfolds with every bend in the road. En route, we stop at Arrowtown, a picturesque gold-mining town tucked within a river valley surrounded by mountains. Established in 1862, its heritage buildings line the town streets, including tiny miners' cottages. From here, we climb the Crown Range Road, New Zealand's highest paved highway. Once we pass the historic hamlet of Cardrona, site of the Central Otago Gold Rush of the 1860s, the vast blue expanse of Lake Wanaka comes into view, portal to Mount Aspiring National Park. The basin filled by Lake Wanaka was gouged out by the Wanaka Glacier, born high in the ice fields that crown the jagged peaks in the distance.

Once we're settled in at our lakeside hotel, a very special experience is in store: a local Maori welcome featuring a traditional Haka performance. This authentic encounter is designed to connect guests on a more personal level with the Indigenous heritage and present-day Maori culture of Aotearoa (New Zealand).



Discovering Our Planet Together

Day 6: Lake Wanaka—Private Boat Tour to Mou Waho Island

Our day begins with a 3-hour private boat excursion on Lake Wanaka. Cruising into the sparkling waters, we quickly leave any sign of civilization behind, surrounded only by tawny hills rising on all sides, with higher peaks beyond. Step ashore on remote Mou Waho Island, a predator-free nature reserve that's home to the rare flightless buff weka—a curious, amiable bird that has been extinct on the mainland since 1920. A guided bush walk to the top of the island reveals a hidden lake on the summit, a photogenic spot where we'll enjoy a cup of tea with the panorama of the Southern Alps on display before us. Our tour of the island reveals an impressive conservation success story, as we find out how invasive species—including the weasel-like stoat—were eradicated to preserve the buff weka as well as the mountain stone weta, a prehistoric insect as big as a person's thumb.

Later this afternoon, enjoy a short hike to explore some of the Wanaka environs on foot – or choose to relax or wander the town on your own before dinner. After nightfall, step outside and look up: the Wanaka region has some of the darkest, starriest night skies on Earth.

Day 7: Haast Pass / Lake Moeraki

Leaving Wanaka's golden mountains behind, traverse moss-draped beech forest as we cross Haast Pass this afternoon into the heart of the West Coast glacier country. We stop to take in the view at the top of the pass, which is one of three main passages across the Southern Alps and was once an important Maori trading route. The lush scenery is glorious, and trails lead from the road's edge along turquoise streams into the rainforest to dramatic waterfalls, including Thunder Falls where we stop for a nature walk to view Haast River. Paralleling the river as we descend the pass, we ultimately reach the ocean and the windswept sand dunes of New Zealand's wild West Coast. Turning north, we follow the dramatic coastal route before cutting inland to Lake Moeraki for a two-night stay at a secluded wilderness lodge in this exceptionally scenic region, which remains lightly visited.



Day 8: Exploring Lake Moeraki & Monro Beach

Lake Moeraki lies at the heart of a natural paradise in the Te Wahipounamu–South West New Zealand World Heritage Area. Virtually unchanged since the Polynesians discovered New Zealand, this dramatic landscape has been shaped by successive glaciations into fjords, rocky coastlines, sheer cliffs, waterfalls, lakes, rivers and ancient forests. From our lodge base, explore the natural environs on locally guided excursions, including kayaking on Lake Moeraki and a walk among head-high tree ferns to wild Monro Beach. Our hosts take us to meet New Zealand's endangered long finned eel, a slow growing, long-lived species that swims all the way to the deep ocean trenches near Tonga to breed. At night, guests have the opportunity to look for glowworms, whose bioluminescent can be seen in secret locations along the forest track near the lodge.

October and November departures include a half-day private outing on a remote trail to a spectacular beach to see rare Tawaki penguins. Found only on the southwest coast and islands of New Zealand, they are also called Fiordland crested penguins and are the only penguins that live in the rainforest. About 2,000 pairs remain, with 10% of the population found along the shores of Lake Moeraki.

December to March departures spend a half-day exploring with a local naturalist. One option may include a walk within the local rainforest to see 1,000-year-old trees, including the world's most epiphyte-laden tree with more than 100 species residing on it, plus unique ferns, orchids, mosses and birdlife otherwise missed by the casual observer. Or we may walk along the dramatic sea coast with its rock pillars, waterfalls and wave-sculpted driftwood, with a chance to find your own souvenir piece of greenstone on the beach. With luck, we might spot Hector's dolphins, the world's smallest marine dolphin that's endemic to New Zealand.



Discovering Our Planet Together

Day 9: Westland Tai Poutini National Park / Arthur's Pass

More of New Zealand's magnificent scenery unfolds as we travel along the west coast into glacier country. Two World Heritage Site national parks, Aoraki Mount Cook and Westland Tai Poutini, encompass many of New Zealand's highest mountains, turquoise lakes, braided rivers and massive glaciers, including the Tasman, Franz Josef and Fox. Spawned in the ice fields of the Southern Alps, they wind down like frozen highways into primeval rainforest, almost reaching the ocean.

We stop at Hokitika, a historic river port born out of the 1860 gold rush. Today, the laid-back small town is known for an indigenous greenstone called pounamu, or New Zealand jade, prized by the Maori for its strength, durability and beauty, and used for weapons, tools and personal ornaments. Walk along the sandy beach where plentiful driftwood is formed into imaginative sculptures before continuing to Westland Tai Poutini National Park. Heading inland, our route traverses the Craigieburn Range, where endemic scree plants and giant weta insects thrive. Our destination is Arthur's Pass Wilderness Lodge, a deluxe ecolodge set amid mountain beech forest and surrounding Arthur's Pass National Park. Keep an eye out here for the kea, the endangered alpine parrot endemic to this part of New Zealand and often seen in this area.

Day 10: Arthur's Pass—Hiking & Kayaking on Lake Pearson

Our lodge lies at the heart of a spectacular 4,000-acre property where half the land is dedicated to protecting rare plants and animals and the other half is a working sheep station, where some 3,000 sheep are raised for fine merino wool. During a full day of exploration, we learn about the region's natural history and agricultural heritage, gaining a firsthand look at sheep farming as we watch agile sheepdogs work, hand-feed tame sheep, and learn about shearing and the production of merino wool, renowned for its use in creating soft, fine-gauge garments, and enjoy a private kayaking excursion on Lake Pearson, a placid high-country lake tucked between steep mountainsides. There are also several options to hike forest trails around the lodge with a local naturalist, getting a close-up look at the mossy beech trees and unusual moa shrubs as you learn about the native ecosystem.

Day 11: Arthur's Pass / Christchurch—City Tour

On our final morning, take a last leisurely nature walk before departing for Christchurch. New Zealand's oldest city, Christchurch is noted for its British character and Victorian architecture, although much of the latter was lost in the devastating 2010 and 2011 Canterbury earthquakes. A brief city tour includes a stop at Quake City, an exhibit about the natural and human dimensions of the disaster, from which the city is still recovering. This evening, enjoy a farewell dinner together.



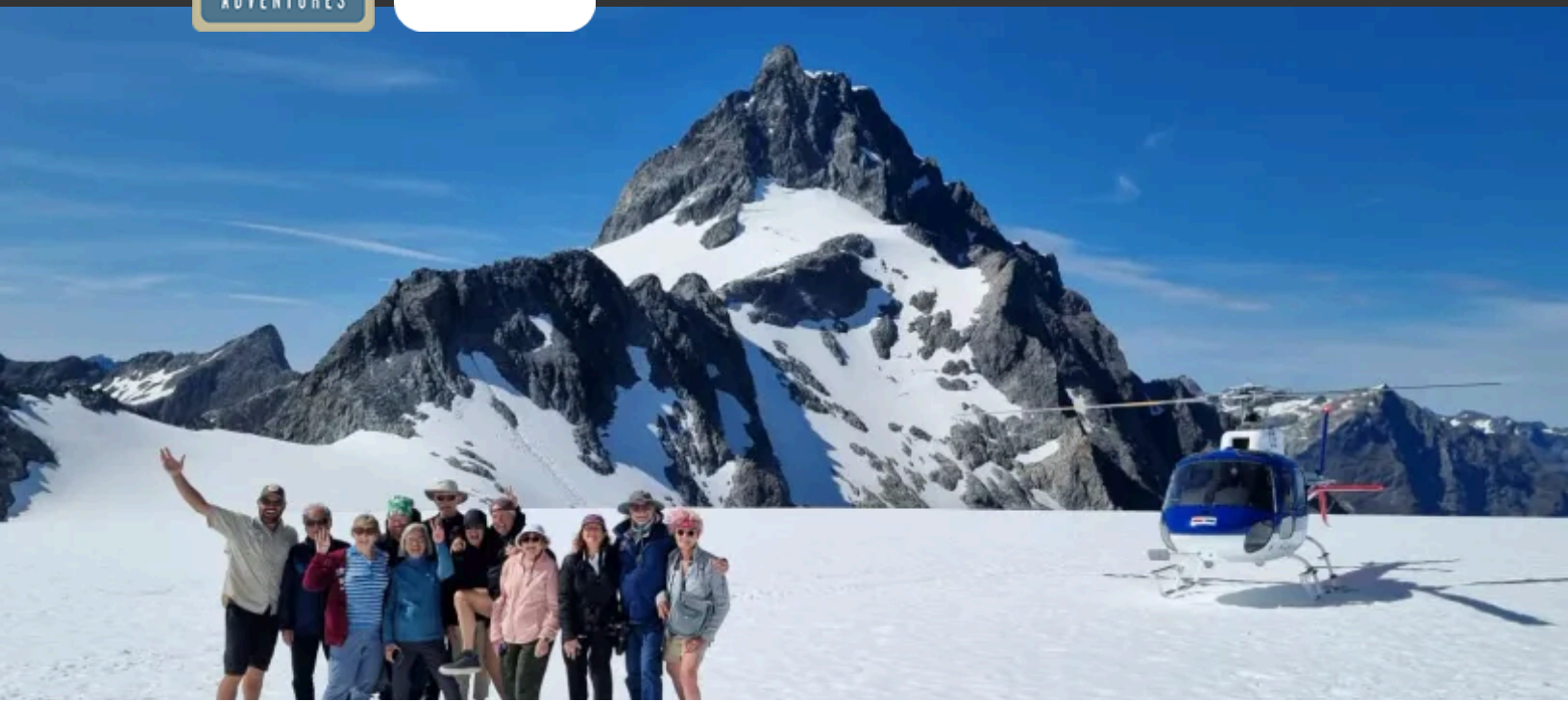
Discovering Our Planet Together

Day 12: Christchurch / Depart

Our New Zealand adventure draws to a close as we transfer to the airport for flights home.



Discovering Our Planet Together



Accommodation Details:

Larnach Castle

Kaka Retreat

Bay Motel

Distinction Te Anau

Edgewater Resort

Oakridge Resort

Wilderness Lodge Lake Moeraki

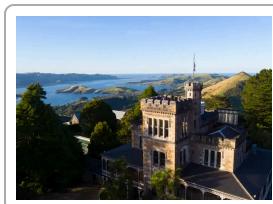
Wilderness Lodge Arthur's Pass

Distinction Christchurch Hotel

For detailed descriptions, visit
nathab.com/asia-adventure-travel/new-zealand-explorer/accommodations

New Zealand Nature Explorer Accommodations

A Small-Group Immersion in the Scenic Splendors of New Zealand's South Island



Larnach Castle

New Zealand's 1871 castle and its award-winning gardens with sweeping sea views are a beacon on the picturesque Otago Peninsula, with a dozen lodge rooms next to the historic stables.



Kaka Retreat

Located in a tranquil spot surrounded by Stewart Island's native bush, the rustic KaKa Retreat enjoys a peaceful atmosphere just a short walk from the beach and town center.



Bay Motel

With views over Halfmoon Bay and the bush-clad hills of Stewart Island, this comfortable hotel at the edge of Rakiura National Park has just nine rooms that overlook the town and water.



Discovering Our Planet Together



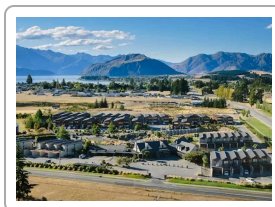
Distinction Te Anau

Overlooking Lake Te Anau and the Fiordland ranges, this recently renovated hotel offers contemporary rooms with plenty of amenities and private balconies with views of the lake.



Edgewater Resort

The only hotel located directly on the shore of Lake Wanaka, the Edgewater features rooms with private balconies or patios with lake and mountain views...plus outdoor hot tubs for a soak under the stars.



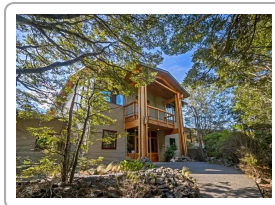
Oakridge Resort

The Oakridge Resort offers well-appointed mountain-view accommodations just a short hop from Lake Wanaka, with nine free-form heated swimming pools on the beautifully landscaped grounds.



Wilderness Lodge Lake Moeraki

At the forefront of nature conservation in this pristine region, this landmark ecolodge was created to demonstrate a sustainable alternative to logging, and today is part of a 6.7 million-acre World Heritage area of lowland rainforest.



Wilderness Lodge Arthur's Pass

In the heart of the Southern Alps, midway between Christchurch and the South Island's west coast, the lodge is surrounded by a 4,000-acre conservation reserve and high-country merino sheep station.



Distinction Christchurch Hotel

This newly renovated hotel on rejuvenated Cathedral Square in heart of Christchurch is a sanctuary within the city, combining an optimal location with sophistication, warmth and every amenity.



See More of Natural New Zealand, Farther off the Standard Track

Most New Zealand tours focus on the same few popular highlights, like Milford Sound. While we'd never dream of skipping those notable draws, we take you farther into New Zealand's remote reaches, away from crowds, for a Down Under nature odyssey you'll have a hard time finding anywhere else. When you travel with us, you'll enjoy distinctive experiences like these:

1 Fly by Small Plane to Stewart Island to Look for Rare Endemic Wildlife

Few travelers to New Zealand visit lushly forested Stewart Island. But we've included it, with the unusual opportunity to look for the endemic flightless brown kiwi bird on a guided night walk. This island is also a breeding and nesting site for one of the world's rarest birds: the Fiordland crested penguin.

2 Visit the Isolated Nature Sanctuary of Ulva Island

Just minutes from Stewart Island lies wild Ulva Island, a predator-free environment for rare and endangered birds. Explore pristine trails and beaches, observing bird species that no longer exist on the main islands. Not on your standard itinerary!

3 Fly by Private Helicopter over Milford Sound to Queenstown

Enjoy a stunning aerial view of Milford Sound and Fiordland National Park on a chartered helicopter flight, with landings at Tutuko Glacier and Quill Lake. Not only does this spectacular flight get you up into high-alpine terrain with unparalleled views of New Zealand's Southern Alps and myriad lakes, it also saves a winding 5-hour drive.

4 Stargaze Under Some of Earth's Darkest Skies

In two places, we'll have a chance to experience some of the darkest skies on the planet. Look for glowworms and glittering stars on a guided night walk from Lake Moeraki Wilderness Lodge, located near (as the crow flies) Aoraki Mackenzie International Dark Sky Reserve. We also take two night walks on Stewart Island, known as Rakiura in the Maori language, which means "Land of Glowing Skies." If we're lucky, we might even see the aurora australis on the southern horizon.

5 A Small-Group Nature Experience from Beginning to End

Nat Hab has always been committed to the principle that nature is best experienced in small groups. You'll travel in a group of no more than 11 in a private mini-coach—no big tour buses for us. Few other companies come anywhere near our small numbers, which means you have more intimate and authentic experiences wherever we go.



Discovering Our Planet Together

6 Visit a Working Sheep Farm—Not a Tourist Set-Up

It's often said that New Zealand has more sheep than people, and you'll want to get to know more about these famous residents. We visit an authentic working sheep farm to learn from our hosts about the role these animals have played in the country's history, and their current significance.

7 Small Chartered Boats for Private Wildlife Viewing

Most companies send their groups on marine wildlife-watching excursions aboard larger commercial vessels shared with other passengers. With Nat Hab, you'll cruise on privately chartered small boats for a quiet, personal experience of nature, including on Milford Sound.

8 Stay in Nature's Most Dramatic Locations

No cookie-cutter chain hotels for us. Although they range from simple to luxurious, our lodgings place us in the most striking natural places New Zealand has to offer. Sleep in a lodge tucked into an open forest clearing and run by a family that traces its farming roots back to 1860. On the shores of Lake Wanaka, enjoy spectacular views of the lake and Southern Alps. In every case, we choose our accommodations for their authenticity, history, atmosphere and proximity to nature.

9 Your Naturalist Expedition Leader Is a New Zealand Expert

Nat Hab has earned an international reputation for employing the highest-quality Expedition Leaders in the industry. Our guides average 15 years of experience and training, with additional resources and access to WWF's top scientists. **Read our Expedition Leader bios** and traveler comments regarding the quality of our leaders.

10 Our Quality-Value Guarantee Ensures Your Outstanding Nature Adventure

Natural Habitat Adventures is proud to offer our exclusive guarantee that clearly states that we will meet the high expectations we set forth in our promotional materials. To our knowledge, this is the most ambitious guarantee made by any adventure travel company.

11 Feel Good About Your Carbon-Neutral Journey

We care deeply about our planet, as we know you do. When you travel with us, the carbon emissions from your trip are 100% offset—including your round-trip flights from home. Natural Habitat Adventures has been the world's first carbon-neutral travel company since 2007.

12 Natural Habitat Adventures is WWF's Travel Partner

Because of our commitment to environmentally friendly travel, as well as the exceptional quality of our small-group nature adventures, World Wildlife Fund, the world's leading environmental conservation organization, has named Natural Habitat Adventures its worldwide travel partner—a designation that makes us exceedingly proud!



Discovering Our Planet Together



Dates & Pricing Summary:

Prices:
From \$14995
(+Air)

Group Size:
Limited to 11
Travelers

New Zealand Nature Explorer Dates, Pricing & Info

A Small-Group Immersion in the Scenic Splendors of New Zealand's South Island

2026 Departures

Departure	Return	Notes
Feb 28, 2026	Mar 11, 2026	\$14995 USD (+internal air)
Mar 15, 2026	Mar 26, 2026	\$14995 USD (+internal air)
Mar 20, 2026	Mar 31, 2026	\$14995 USD (+internal air)
Oct 1, 2026	Oct 12, 2026	\$14995 USD (+internal air) Habitat Club Pricing Available
Oct 5, 2026	Oct 16, 2026	\$14995 USD (+internal air)
Oct 20, 2026	Oct 31, 2026	\$14995 USD (+internal air)



Discovering Our Planet Together

Dates & Pricing Summary:

Prices:
From \$14995
(+Air)

Group Size:
Limited to 11
Travelers

Departure	Return	Notes
Oct 24, 2026	Nov 4, 2026	\$14995 USD (+internal air)
Nov 2, 2026	Nov 13, 2026	\$14995 USD (+internal air)
Nov 8, 2026	Nov 19, 2026	\$14995 USD (+internal air)
Nov 12, 2026	Nov 23, 2026	\$14995 USD (+internal air)
Dec 1, 2026	Dec 12, 2026	\$14995 USD (+internal air)
Dec 5, 2026	Dec 16, 2026	\$14995 USD (+internal air)

2027 Departures

Departure	Return	Notes
Jan 16, 2027	Jan 27, 2027	\$14995 USD (+internal air)
Jan 20, 2027	Jan 31, 2027	\$14995 USD (+internal air)
Jan 24, 2027	Feb 4, 2027	\$14995 USD (+internal air)
Jan 28, 2027	Feb 8, 2027	\$14995 USD (+internal air)
Feb 2, 2027	Feb 13, 2027	\$14995 USD (+internal air)
Feb 11, 2027	Feb 22, 2027	\$14995 USD (+internal air)
Feb 14, 2027	Feb 25, 2027	\$14995 USD (+internal air)



Discovering Our Planet Together

Dates & Pricing Summary:

Prices:
From \$14995
(+Air)

Group Size:
Limited to 11
Travelers

Departure	Return	Notes
Mar 1, 2027	Mar 12, 2027	\$14995 USD (+internal air)
Mar 12, 2027	Mar 23, 2027	\$14995 USD (+internal air)
Mar 19, 2027	Mar 30, 2027	\$14995 USD (+internal air)
Oct 2, 2027	Oct 13, 2027	\$14995 USD (+internal air)
Oct 8, 2027	Oct 19, 2027	\$14995 USD (+internal air)
Oct 14, 2027	Oct 25, 2027	\$14995 USD (+internal air)
Oct 20, 2027	Oct 31, 2027	\$15495 USD (+internal air)
Oct 27, 2027	Nov 7, 2027	\$14995 USD (+internal air)
Nov 3, 2027	Nov 14, 2027	\$15495 USD (+internal air)
Nov 9, 2027	Nov 20, 2027	\$15495 USD (+internal air)
Nov 15, 2027	Nov 26, 2027	\$14995 USD (+internal air)
Nov 22, 2027	Dec 3, 2027	\$14995 USD (+internal air)
Dec 2, 2027	Dec 13, 2027	\$14995 USD (+internal air)

2028 Departures



Discovering Our Planet Together

Dates & Pricing Summary:

Prices:
From \$14995
(+Air)

Group Size:
Limited to 11
Travelers

Departure	Return	Notes
! Prices and dates not confirmed for 2028		
Jan 2, 2028	Jan 13, 2028	\$14995 USD (+internal air)
Jan 6, 2028	Jan 17, 2028	\$14995 USD (+internal air)
Jan 16, 2028	Jan 27, 2028	\$14995 USD (+internal air)
Jan 23, 2028	Feb 3, 2028	\$14995 USD (+internal air)
Jan 28, 2028	Feb 8, 2028	\$14995 USD (+internal air)
Jan 30, 2028	Feb 10, 2028	\$14995 USD (+internal air)
Feb 10, 2028	Feb 21, 2028	\$14995 USD (+internal air)
Feb 12, 2028	Feb 23, 2028	\$14995 USD (+internal air)
Feb 24, 2028	Mar 6, 2028	\$14995 USD (+internal air)
Feb 27, 2028	Mar 9, 2028	\$14995 USD (+internal air)
Mar 2, 2028	Mar 13, 2028	\$14995 USD (+internal air)
Mar 5, 2028	Mar 16, 2028	\$14995 USD (+internal air)
Mar 9, 2028	Mar 20, 2028	\$14995 USD (+internal air)
Mar 12, 2028	Mar 23, 2028	\$14995 USD (+internal air)



Discovering Our Planet Together

Dates & Pricing Summary:

Prices:
From \$14995
(+Air)

Group Size:
Limited to 11
Travelers

Departure	Return	Notes
! Prices and dates not confirmed for 2028		
Mar 18, 2028	Mar 29, 2028	\$14995 USD (+internal air)
Oct 1, 2028	Oct 12, 2028	\$14995 USD (+internal air)
Oct 7, 2028	Oct 18, 2028	\$14995 USD (+internal air)
Oct 13, 2028	Oct 24, 2028	\$14995 USD (+internal air)
Oct 19, 2028	Oct 30, 2028	\$14995 USD (+internal air)
Oct 26, 2028	Nov 6, 2028	\$14995 USD (+internal air)
Nov 2, 2028	Nov 13, 2028	\$14995 USD (+internal air)
Nov 8, 2028	Nov 19, 2028	\$14995 USD (+internal air)
Nov 14, 2028	Nov 25, 2028	\$14995 USD (+internal air)
Nov 21, 2028	Dec 2, 2028	\$14995 USD (+internal air)
Dec 1, 2028	Dec 12, 2028	\$14995 USD (+internal air)



Pricing

See <https://nathab.com/asia-adventure-travel/new-zealand-explorer/dates-fees> for the latest pricing details.

Included

- **Trip price includes:** Accommodations, services of Nat Hab's professional Expedition Leader(s), local guides and lodge staff, all meals from dinner on Day 1 through breakfast on final day, private boat tour on Stewart Island, private boat tour in Milford Sound, private boat tour to Mou Waho Island, all kayaking equipment, some gratuities, airport transfers for those arriving by air on Day 1 and final day, all activities and entrance fees, all taxes, permits and service fees.
- **Internal air fee includes:** Flights from Invercargill to Stewart Island and back to Invercargill, and private scenic helicopter flight from Milford Sound to Queenstown, including scenic glacier and alpine lake landings, plus any additional taxes and fees on these flights (this will be listed separately on our invoicing).

Not Included

Travel to and from the start and end point of your trip, some alcoholic beverages, some gratuities, passport and visa fees (if any), optional activities, items of a personal nature (phone calls, laundry and internet, etc.), airline baggage fees, airport and departure taxes (if any), required medical evacuation insurance, optional travel protection insurance.



Important Information About This Trip

The South Island of New Zealand is vast, and we attempt to take in as much of this beautiful land as possible without rushing, from mountain passes to ocean fjords. Our comprehensive exploration covers more than 900 miles, and the trip involves a fair amount of driving. These are scenic drives that we break up with activities and short stops. They're always worth the windshield time, allowing us to visit iconic nature destinations like Stewart Island, Milford Sound, Lake Wanaka and the beautiful Wilderness Lodges at Lake Moeraki and Arthur's Pass. Our Expedition Leader knows the land and its flora and fauna intimately as well as its less-visited sites.

New Zealand's climate is quite complex and varied. Travelers should expect a cool, temperate climate on the South Island, with alpine conditions in the mountainous areas. Mountain chains extending the length of New Zealand provide a barrier for the prevailing westerly winds, dividing the country into dramatically different climate regions. The west coast of the South Island is the wettest area of New Zealand; thus, when traveling in this region, you should be prepared to encounter some rain. The areas just to the east of the mountains are the driest. Keep in mind you should be prepared for chilly wet weather.

Meals on your New Zealand adventure are generally satisfying and well-prepared, with an emphasis on fresh, local ingredients. You'll enjoy a variety of dining experiences, from lodge-cooked meals and casual barbecues to regional specialties served in scenic settings. That said, it's important to note that in remote areas—such as Stewart Island or along the West Coast—meal options can be limited due to location and access to supplies. In these settings, you can expect simple, wholesome meals that reflect what's locally available. Travel days may also include more straightforward meals like packed lunches or quick stops. While the overall quality is strong, we encourage guests to bring a flexible mindset and an appetite for variety—these meals are part of the authentic, off-the-beaten-path experience that makes this trip so memorable.

Accommodations on your New Zealand adventure are chosen not just for comfort, but for their location and connection to the surrounding environment. You'll stay in a mix of boutique hotels, historic properties, and remote wilderness lodges—places that immerse you in the landscapes, wildlife, and culture that make this journey so special. Because some of our destinations are intentionally remote (such as Stewart Island), amenities may be simpler. You might find that rooms are more rustic, with fewer modern conveniences, but they offer warmth, character, and often a deeper connection to place. These properties are selected for their proximity to nature, and while they may be simple, they are all a part of exploring New Zealand's wilder corners in a meaningful way.

Mandatory Insurance

Since the areas we travel to are remote and wild (that's why we go there!), we require that all guests have, at minimum, medical evacuation insurance for this program. This is for the safety of all guests. We require that your chosen independent insurance plan includes at least \$250,000 in medical evacuation coverage.

To protect your investment and to provide peace of mind while you travel, we also strongly recommend purchasing comprehensive travel insurance. Plans may cover everything from medical treatment to trip cancellations and delays and lost luggage. Please contact our office if you would like more information about the medical evacuation and comprehensive travel insurance policies we offer by calling 800-543-8917.



Getting There & Getting Home

This trip begins in Dunedin, New Zealand, and ends in Christchurch. **We recommend that you arrive at least one day prior to Day 1** to rest from your travels and adjust to the time difference. For guests who come in early, recommended hotels will be included in your pre-departure materials. Guests participating in the North Island pre-trip extension have an included pre-trip night in Dunedin and will join the full group at the start of the tour.

If you plan to arrive on Day 1, you must arrive in Dunedin by 12 pm in order to join your group for an orientation meeting at 2 pm, followed by an afternoon tour of the Otago Peninsula to view royal albatross and yellow-eyed penguins.

You may depart Christchurch any time on the final day.

Our Natural Habitat Adventures Travel Desk can best assist with your travel reservations, as our staff is familiar with the specific requirements of this program and can help arrange the most efficient itinerary. Please call us at 800-543-8917. While we offer the best available rates to us on airfare and additional nights' accommodations, you may occasionally find special web rates or lower fares online.



Discovering Our Planet Together



Extension Details:

New Zealand North Island Pre-Trip Extension
\$3695

Ultimate Australia Safari
\$28495

Australia South: Tasmania, Kangaroo Island & the Great Ocean Road
\$16995

New Zealand Nature Explorer Extensions

A Small-Group Immersion in the Scenic Splendors of New Zealand's South Island



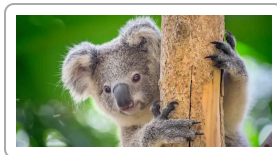
New Zealand North Island Pre-Trip Extension

The ideal complement to your South Island adventure, this sampler of North Island highlights includes Rotorua and the Coromandel Peninsula—explore mist-clad mountains, pristine beaches, waterfalls, geysers, mineral springs and Maori culture.
\$3695 (+air)



Ultimate Australia Safari

A three-week nature extravaganza from Australia's tropical top to Tasmania down south, including the Great Barrier Reef and Outback. Eight national parks, seven private reserves and four World Heritage Sites!
\$28495 (+air)



Australia South: Tasmania, Kangaroo Island & the Great Ocean Road

Discover the diverse landscapes and ecology of far-south Australia as we explore four national parks and a host of private nature reserves teeming with endemic and endangered wildlife.
\$16995 (+air)



Natural Habitat & WWF: Discovering Our Planet Together

Natural Habitat Adventures • PO Box 3065 • Boulder, CO USA 80307

USA & Canada: 800-543-8917 • International: 303-449-3711

© 2026 Natural Habitat Adventures

WWF's membership travel program is operated by Natural Habitat Adventures (Nat Hab). To date, Nat Hab has provided more than \$6 million in support of WWF's mission and will continue to give 1% of gross sales plus \$175,000 annually through 2028. WWF® and ©1986 Panda Symbol are owned by WWF. All rights reserved.