



Discovering Our Planet Together



Iceland: Circling the Land of Fire & Ice

A Full Loop Around a Nordic Realm of Waterfalls, Glaciers, Geysers & Volcanoes



Discovering Our Planet Together

Table of Contents:

Trip Overview	3
Trip Itineraries	4
Classic Itinerary	5
Autumn Itinerary	11
Trip Accommodations	17
What Makes Nat Hab Different?	19
Make It Private	22
Dates & Pricing Information	23
Trip Extensions	28



Discovering Our Planet Together



Trip Details:

Days

11 Days / Jul–Sep

Price

From \$15695 (+Air)

Physical

Requirements
Moderate

Iceland: Circling the Land of Fire & Ice

A Full Loop Around a Nordic Realm of Waterfalls, Glaciers, Geysers & Volcanoes

Iceland is a small island nation on the edge of the Arctic Circle, but few countries are bigger on natural wonders. Glaciers and geysers, hot springs and waterfalls, basalt pillars and black sand beaches, frigid fjords and fields of lava...Iceland has all these and more, and our expedition showcases the full array of its striking contrasts. Uninhabited until the island was settled by Norse Vikings in the 9th century, Iceland today is one of the most sparsely populated countries in Europe. Along its shores, we're outnumbered by whales, seals and puffins, which we scout out on private boat excursions. Inland, walk atop raw terrain born of fiery volcanoes and carved by glaciers. Here the North American and Eurasian plates meet, and geothermal forces create a dynamic and dramatic landscape—an experience of pure nature at its most powerful.

Trip Highlights

Make a complete circle around Iceland by private mini bus, chartered plane, boat and 4x4—you won't find a more thorough immersion in Icelandic nature

Explore less-visited areas including the far-flung Westfjords, with a private boat cruise to see whales and a seasonal summer puffin colony

Witness Iceland's volcanic features, including Lake Myvatn's lava formations and a Super Jeep tour to Askja caldera and Viti crater on summer departures



Discovering Our Planet Together



Trip Details:

Days

11 Days / Jul-Sep

Price

From \$15695

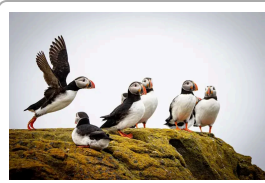
(+Air)

Physical Requirements

Moderate

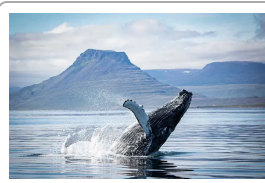
Iceland: Circling the Land of Fire & Ice Itineraries

A Full Loop Around a Nordic Realm of Waterfalls, Glaciers, Geysers & Volcanoes



Classic Itinerary

An immersive journey into the rugged grandeur of a land sculpted by intense geological forces. Make a full loop around Iceland on the most comprehensive adventure this compact country has to offer.



Autumn Itinerary

After summer's crowds are gone, a palette of fall color accents Iceland's dramatic landscapes, and the return of dark night skies may offer a chance to see the northern lights.



Discovering Our Planet Together



Itinerary At A Glance

Day 1

Keflavik, Iceland / Reykjavik

Day 2

South Shore—Lava Center /
Waterfalls / Vik—Lava Show

Day 3

Skaftafell—Private Glacier Walk or
Park Hike / Private Zodiac Tour of
Fjallsarlon Glacier Lagoon

Day 4

Djupivogur Private Walking Tour /
Vallanes Farm / Modrudalur

Day 5

Askja Caldera Private Super Jeep
Tour / Modrudalur

Day 6

Dettifoss / Hverarond / Lake
Myvatn—Optional Horseback Ride
/ Hot Springs

Day 7

Dimmuborgir / Godafoss /
Chartered Flight to Isafjordur

Classic Itinerary

A Full Loop Around a Nordic Realm of Waterfalls, Glaciers, Geysers & Volcanoes

Day 1: Keflavik, Iceland / Reykjavik

Arrive at Keflavik International Airport where you are met on arrival and transferred to our hotel in Reykjavik, about a 45-minute drive. This evening, join our Expedition Leader for a welcome dinner at a local restaurant, with an orientation to all the adventures that lie ahead in this geological wonderland.





Discovering Our Planet Together

Itinerary At A Glance

Day 8

Exploring the Westfjords—Private Super Jeep 4x4 Excursion

Day 9

Aedey Island—Private Whale-Watching Excursion

Day 10

Hornstrandir Nature Reserve / Isafjordur / Reykjavik

Day 11

Reykjavik / Keflavik / Depart

Day 2: South Shore—Lava Center / Waterfalls / Vik—Lava Show

Explore Iceland's south coast en route to Vik, an area known for its volcanic black sand beaches and countless waterfalls. We are in the region affected by the powerful 2010 eruption of Eyjafjallajokull volcano, an event brought to life at the Lava Center, which features interactive exhibits depicting the colossal natural forces that have created Iceland over tens of millions of years. Our knowledge of Iceland's dynamic geology is enhanced as we learn about the eruptions and lava flows, rift systems, faults and glacial floods that make the island a showcase of volcanism. The center introduces us to the UNESCO Katla Global Geopark plus Iceland's elaborate monitoring system for surveying volcanos and earthquake zones.

Continuing along the south coast, we stop at several thundering waterfalls, including powerful Skogafoss and Kvernufoss. Another famous highlight is Reynisdrangar Rocks, a trio of columnar basalt sea stacks. Legend holds that they were formed after two trolls were out fishing in a three-masted ship. When the trolls did not return to their cave before sunrise, they and their vessel turned into needles of stone, since trolls cannot tolerate daylight. Here, we'll have a chance to walk on the famous black sand beach before continuing to the exciting Lava Show in Vik, followed by dinner at the restaurant on site. The Lava Show, renowned for its educational value, recreates a volcanic eruption by superheating real lava up to 2000°F, then pouring the molten rock it into a room at close range where guests can watch it flow, hear it sizzle and feel the incredible heat. After dinner, continue to our nearby hotel to spend the night.

Day 3: Skaftafell—Private Glacier Walk or Park Hike / Private Zodiac Tour of Fjallsarlón Glacier Lagoon

Our focus today is Skaftafell, a national park now absorbed inside the larger Vatnajökull National Park established in 2008. Known for its rugged landscapes, mountains and glaciers, Skaftafell contains about half of the Vatnajökull Glacier, Europe's largest ice cap. No roads penetrate the park's wild recesses, but two options offer a chance to explore a slice of it: Choose between a walk atop a glacier or an easy hike with glacial views. We then board a private Zodiac to explore Fjallsarlón Glacier Lagoon, a less-touristed opportunity to get close to floating icebergs. The lake is the meltwater from Fjallsarlón Glacier, a tongue of the massive Vatnajökull Glacier, which has calved the huge chunks of blue ice that drift on the surface.



Discovering Our Planet Together

Day 4: Djupivogur Private Walking Tour / Vallanes Farm / Modrudalur

Enjoy a day of cultural connections as we enter the East Fjords, a little-visited region of forests, farms and picturesque fishing villages. In the town of Djupivogur, take a scenic walk along the coast near Alftafjordur, then join a local resident for a stroll around a historic fishing town, learning about daily life where traditions and livelihoods center on the sea. After, admire the Eggs of Merry Bay, one of Iceland's most unusual sculptures. Created in 2009 by Icelandic artist Sigurdur Gudmundsson, the 34 large-scale egg replicas represent 34 bird species found in the area, each one mounted on a platform along the harbor.

Heading inland, follow a remote road to Vallanes Farm where we stop for hot drinks and snacks at this organic farm and cafe crafted of sustainably harvested wood. Continue to Modrudalur, one of the oldest farms in Iceland, with evidence of its presence since the original settlement by the Vikings. The site was an important crossroads where two historic cross-country trails intersected, and its location is referenced in the famous Sagas that date to the 10th and 11th centuries. Modrudalur is also the highest inhabited place in Iceland, at 1,539 feet above sea level. We spend the next two nights here at Fjalladyrd, a hospitable family-run farm and guesthouse that offers easy access to Askja volcano for our 4x4 adventure tomorrow.

Day 5: Askja Caldera Private Super Jeep Tour / Modrudalur

Set out in Super Jeeps this morning for a thrilling tour to Askja caldera. These large SUVs have been modified with big tires and extra shock absorption to provide a more comfortable ride over off-road terrain, allowing deeper access into Iceland's central highlands. We ascend on foot to explore the massive Askja caldera, formed when successive volcanic eruptions repeatedly emptied the magma chamber, causing the ground to drop. Lake Askja, formed when the volcano erupted in 1875, fills part of the depression and is one of the deepest lakes in Iceland, at nearly 700 feet. The caldera contains several overlapping craters with active volcanoes beneath, including Viti, which warms a sulphuric blue-green crater lake. Following a picnic lunch, explore more of Iceland's little-visited Central Highlands before returning to Modrudalur for a second night at Fjalladyrd.

***Please note:** On early and late season departures when snow may affect our access to Askja Caldera, or when visibility is significantly limited by inclement weather, we will substitute with an alternative Super Jeep tour in the Highlands. Our journey may include a secret waterfall and 5,501-foot Herdubrid, a peak known as the "Queen of Iceland." A highlight is Hafrahvammagljufur Canyon, a dramatic gorge more than 650 feet deep.*



Discovering Our Planet Together

Day 6: Dettifoss / Hverarond / Lake Myvatn—Optional Horseback Ride / Hot Springs

Witness the power of Dettifoss, Europe's largest waterfall by volume and the most powerful cataract in Iceland. This thundering curtain of water, 330 feet wide and 150 high, is fed by the giant Vatnajökull Glacier. If we're lucky, we might see a rainbow over the falls, which makes for dramatic photos. Next we explore the Hverarond geothermal area, an otherworldly setting of hissing steam vents, bubbling mud pots, cracked earth and pungent sulphur, then continue to Lake Myvatn. Formed during a massive eruption 2,300 years ago, the Myvatn region is still a site of geothermal activity, with lava flows coming most recently from the 1984 eruption of Krafla volcano. Numerous lava formations are found in and around the shallow lake, and we explore the pseudocraters of Skutustadir on a short hike, observing local birdlife. These phenomena are formed when lava flows over wet ground, pushing it down and trapping steam. As pressure mounts, steam explosions create these fascinating "false craters." One of the premier birdwatching areas in the world, Lake Myvatn's marshes provide habitat for huge numbers of migratory birds in summer. More than 115 species have been seen at the lake, including 13 species of nesting ducks, and we hope to see some of them on our walk.

This afternoon, explore the fascinating lava formations around Lake Myvatn on horseback. This optional 1-hour private ride offers a striking vantage point on the region's wondrous geological features, including whimsically shaped pillars and a close-up look at a false crater. For those who may not wish to ride, a birdwatching walk is an alternative. Later today, enjoy a quintessentially Icelandic experience with a soak in a nearby thermal bath. At Myvatn Nature Baths, amid clouds of steam rising from a fissure deep in the Earth, immerse yourself in soothing, milky-turquoise water that's naturally heated by geothermal forces. Drawn from depths of up to a mile and a half below the surface, temperatures in the lagoon pools range from 98°F to 103°F.

Day 7: Dimmuborgir / Godafoss / Chartered Flight to Isafjordur

The day begins with a stop at Dimmuborgir, a dramatic lava field formed by a volcanic eruption some 2,300 years ago and distinguished by towering rock pillars, caves and unusual lava formations. Continuing westward, we stop at Godafoss, one of Iceland's most beautiful waterfalls originating deep in the highlands. Shaped like a crescent, it drops 40 feet over a sheer volcanic cliff. Reaching Akureyri, connect with our late-afternoon chartered flight to Isafjordur, with scenic views of Iceland's indented coastline and glacier-carved interior en route. Originally settled in the 9th century, Isafjordur became a trading post for foreign merchants in the 16th century and today is the main town in the remote Westfjords in far-northwest Iceland.



Discovering Our Planet Together

Day 8: Exploring the Westfjords—Private Super Jeep 4x4 Excursion

The sheer isolation of the Westfjords region has kept it off the traditional tourist circuit, and we traverse it in depth over the next three days, adjusting our exact itinerary for weather and local conditions. We explore the wild hinterlands on an all-day 4x4 tour, stopping for walks, photos and a scenic picnic lunch. At Onundarfjordur, observe rich birdlife in the marshlands and shallow estuary at the head of the fjord. Continue to the village of Thingeyri and beyond, transitioning to dirt track around the Fjallaskagi Peninsula. High-clearance vehicles are essential for negotiating this rugged terrain as we circumnavigate the highest mountains in the area. Keep an eye out for Arctic fox, and look for pieces of petrified trees sticking out of the rocks alongside the narrow road—remnants of a forest that flourished in a much warmer climate thousands of years ago.

Day 9: Aedey Island—Private Whale-Watching Excursion

From Isafjordur, we reach Aedey Island via a private boat ride, looking for whales and birdlife along the way. This rugged outpost, marked by coastal cliffs, towering sea stacks and secluded coves, is best known for its prolific eider duck population. These protected birds produce eiderdown, a luxurious and rare natural insulation filling renowned for its warmth and light weight. Iceland produces 75% of the world's eiderdown annually through sustainable harvesting. After the ducks' eggs hatch and the chicks have fledged, the birds abandon their eiderdown-lined nests, and the farmers who've protected against natural predators collect the precious material. Only one family lives and farms on the island, and they guide us through Aedey's history and the down collecting process. A short scenic walk reveals more of the island, and we're likely to see puffins, guillemots and terns. Our maritime adventure continues as we navigate the intricate fjord system, searching for humpback and minke whales. Returning to Isafjordur, enjoy dinner at the Tar House restaurant, renowned for its fish stew and fresh Icelandic seafood. From our hotel, it's an easy walk back into town later this evening in the lingering light of Iceland's long summer days.



Discovering Our Planet Together

Day 10: Hornstrandir Nature Reserve / Isafjordur / Reykjavik

This morning, explore part of the vast Hornstrandir Nature Reserve that can only be reached by boat. A wild, untouched realm of tundra, sea cliffs, flowering fields and glacier-carved fjords, this 220-square-mile landscape in the most remote corner of Iceland has been protected since 1974. Humans inhabited scattered settlements along Hornstrandir's bays and coves in recent centuries, although they were abandoned in the 1950s as residents sought growing job opportunities and an escape from harsh living conditions, leaving for surrounding towns. No roads, power lines or other manmade structures remain except for a few summerhouses that dot parts of the area.

Across the bay of Isafjardardjup, we get close to the sheer cliffs on Bjarnarnupur before slowly passing a striking rock arch that's home to cormorants and other seabirds. And with millions of seabirds nesting in Hornstrandir's tall cliffs, the reserve is also home to protected Arctic foxes that roam freely on the land. We often see whales and puffins in the sea on our way to Kviar, our base for discovering the pristine Hornstrandir region. Kviar was a large farm until 1948, when the family that lived here joined their neighbors in search of an easier life elsewhere. The old farmhouse, now called Kviar Lodge, has been renovated as a cozy base for exploration, and we may see foxes playing outside. We take a short walk up the valley to look for some of the rich birdlife in the area, including common species such as eider ducks, swans, oystercatchers and snipes to rarer birds such as the white-tailed eagle. If we see foxes, we respect their summer breeding season, keeping our distance. Returning to Isafjordur, we have an early farewell dinner and then head to the airport for our evening flight to Reykjavik.

Please note: Activities in the Westfjords may take place on days or times that are different from what is shown on this itinerary, depending on local schedules, weather conditions, etc.

Day 11: Reykjavik / Keflavik / Depart

After breakfast, a transfer to Keflavik International Airport is included to meet departing flights.



Discovering Our Planet Together



Itinerary At A Glance

Day 1

Keflavik, Iceland / Reykjavik

Day 2

South Shore—Lava Center /
Waterfalls / Vik—Lava Show

Day 3

Skaftafell—Private Glacier Walk or
Park Hike / Private Zodiac Tour of
Fjallsarlón Glacier Lagoon

Day 4

Djupivogur Private Walking Tour /
Vallanes Farm / Modrudalur

Day 5

Private Highlands Super Jeep Tour
/ Modrudalur

Day 6

Dettifoss / Hverarond / Lake
Myvatn / Hot Springs

Day 7

Husavik—Whale Watching /
Myvatn on Horseback

Autumn Itinerary Itinerary

A Full Loop Around a Nordic Realm of Waterfalls, Glaciers, Geysers & Volcanoes

Day 1: Keflavik, Iceland / Reykjavik

Arrive at Keflavik International Airport where you are met on arrival and transferred to our hotel in Reykjavik, about a 45-minute drive. This evening, join our Expedition Leader for a welcome dinner at a local restaurant, with an orientation to all the adventures that lie ahead in this geological wonderland.





Itinerary At A Glance

Day 8

Dimmuborgir / Godafoss / Akureyri / Private Flight to Isafjordur

Day 9

Private Boat Cruise to Hornstrandir Nature Reserve / Kviar / Isafjordur

Day 10

Super Jeep Tour to Thingeyri / Dynjandi

Day 11

Reykjavik / Keflavik / Depart

Day 2: South Shore—Lava Center / Waterfalls / Vik—Lava Show

Explore Iceland's south coast en route to Vik, an area known for its volcanic black sand beaches and countless waterfalls. We are in the region affected by the powerful 2010 eruption of Eyjafjallajokull volcano, an event brought to life at the Lava Center, which features interactive exhibits depicting the colossal natural forces that have created Iceland over tens of millions of years. Here we learn about Iceland's dynamic geology: the volcanic eruptions and lava flows, rift systems, faults and glacial floods that have forged the island. The center introduces us to the UNESCO Katla Global Geopark plus Iceland's elaborate monitoring system for surveying volcanoes and earthquake zones.

Continuing along the south coast, we stop at several thundering waterfalls, including Skogafoss and Kvernufoss. Another highlight is Reynisdrangar Rocks, a trio of columnar basalt sea stacks. Legend holds that they were formed after two trolls were out fishing in a three-masted ship. When the trolls did not return to their cave before sunrise, they and their vessel turned into needles of stone, since trolls cannot tolerate daylight. Here, we'll have a chance to walk on the famous black sand beach before continuing to the Lava Show in Vik, followed by dinner at the restaurant on site. The Lava Show, renowned for its educational value, recreates a volcanic eruption by superheating real lava up to 2000°F, then pouring the molten rock into a room at close range where guests can watch it flow, hear it sizzle and feel the incredible heat. After dinner, continue to our nearby hotel to spend two nights.

Day 3: Skaftafell—Private Glacier Walk or Park Hike / Private Zodiac Tour of Fjallsarlón Glacier Lagoon

Our focus today is Skaftafell, a national park now absorbed inside the larger Vatnajökull National Park established in 2008. Known for its rugged landscapes, mountains and glaciers, Skaftafell contains about half of the Vatnajökull Glacier, Europe's largest ice cap. No roads penetrate the park's wild recesses, but two options offer a chance to explore a slice of it: Choose between a walk atop a glacier or an easy hike. We then board a private Zodiac to explore Fjallsarlón Glacier Lagoon, a less-touristed opportunity to get close to giant floating icebergs. The lake is the meltwater from Fjallsarlón Glacier, a tongue of the massive Vatnajökull Glacier, which has calved the huge chunks of blue ice that drift on the surface.



Discovering Our Planet Together

Day 4: Djupivogur Private Walking Tour / Vallanes Farm / Modrudalur

Enjoy a day of cultural connections as we enter the East Fjords, a little-visited region of forests, farms and picturesque fishing villages. In the town of Djupivogur, admire the Eggs of Merry Bay, one of Iceland's most unusual sculptures. Created in 2009 by Icelandic artist Sigurdur Gudmundsson, the 34 large-scale egg replicas represent 34 bird species found in the area, each one mounted on a platform along the harbor. Take a scenic walk along the coast near Alftafjordur, then join a local resident for a stroll around a historic fishing town, learning about daily life where traditions and livelihoods center on the sea.

Heading inland, follow a remote road to Vallanes Farm where we stop for hot drinks and snacks at this organic farm and cafe crafted of sustainably harvested wood. Continue to Modrudalur, one of the oldest farms in Iceland, with evidence of its presence since the original settlement by the Vikings. The site was an important crossroads where two historic cross-country trails intersected, and its location is referenced in the famous Sagas that date to the 10th and 11th centuries. Modrudalur is also the highest inhabited place in Iceland, at 1,539 feet above sea level. We spend the next two nights here at Fjalladyrd, a hospitable family-run farm and guesthouse.

Day 5: Private Highlands Super Jeep Tour / Modrudalur

Set out this morning in Super Jeeps—kitted-out high-clearance 4x4s—to explore the hidden wonders of eastern Iceland's highlands. These large SUVs have been modified with big tires and extra shock absorption to provide a more comfortable ride over off-road terrain, allowing deeper access into this remote region. On our adventurous journey through the lunar-like landscape, stops include Troll Rocks, a mysterious stack of massive boulders with no known origin, and tea at a traditional turf house. Marvel at Hafravammagljufur Canyon, a 650-foot-deep gorge, from high grassy slopes overlooking the chasm. Ultimately, we make our way to Laugarvalladalur, a verdant valley warmed by a geothermal creek and known for its hot springs waterfall that doubles as a natural shower. Return to Modrudalur for a second night at Fjalladyrd.



Discovering Our Planet Together

Day 6: Dettifoss / Hverarond / Lake Myvatn / Hot Springs

Witness the power of Dettifoss, Europe's largest waterfall by volume and the most powerful cataract in Iceland. This thundering curtain of water, 330 feet wide and 150 high, is fed by the giant Vatnajökull Glacier. If we're lucky, we might see a rainbow over the falls, which makes for dramatic photos. Next, we explore the Hverarond geothermal area, an otherworldly setting of hissing steam vents, bubbling mud pots, cracked earth and pungent sulphur, then continue to Lake Myvatn. Formed during a massive eruption 2,300 years ago, the Myvatn region is still a site of geothermal activity, with lava flows coming most recently from the 1984 eruption of Krafla volcano. Numerous lava formations are found in and around the shallow lake, and we explore the pseudocraters of Skutustadir on a short hike. These phenomena are formed when lava flows over wet ground, pushing it down and trapping steam. As pressure mounts, steam explosions create these fascinating "false craters."

Later today, enjoy a quintessentially Icelandic experience at a nearby thermal bath. At Myvatn Nature Baths, amid clouds of steam rising from a fissure deep in the Earth, soak in soothing, milky-turquoise water that's naturally heated by geothermal forces. Drawn from depths of up to a mile and a half below the surface, temperatures in the lagoon pools range from 98°F to 103°F.

Day 7: Husavik—Whale Watching / Myvatn on Horseback

The coast off Husavik offers some of Iceland's best whale watching, and we head out on a private boat cruise in search of them this morning. Return this afternoon to explore more of the fascinating lava formations around Lake Myvatn on horseback. This one-hour private ride offers a striking vantage point on the region's geological features, including whimsically shaped pillars and a close-up look at a false crater.

Day 8: Dimmuborgir / Godafoss / Akureyri / Private Flight to Isafjordur

Our day begins at Dimmuborgir, a dramatic lava field formed by a volcanic eruption some 2,300 years ago. Distinguished by towering rock pillars, caves and unusual lava formations, Dimmuborgir is spectacular in the fall when the vibrant foliage is at its peak. Continue to Godafoss, one of Iceland's most striking waterfalls, originating deep in the highlands. Shaped like a crescent, it drops 40 feet over a sheer volcanic cliff. Then it's on to Akureyri, Iceland's second-biggest city. Nestled at the base of a fjord and surrounded by mountains, Iceland's "Capital of the North" is a cultural outpost, and we have time to check out downtown galleries and the scenic waterfront, as well as the renowned Akureyri Botanical Gardens, before connecting with our late-afternoon chartered flight to Isafjordur. Originally settled in the 9th century, Isafjordur became a trading post for foreign merchants in the 16th century and today is the main town in the remote Westfjords in far-northwest Iceland, with an economy long focused on fishing.



Discovering Our Planet Together

Day 9: Private Boat Cruise to Hornstrandir Nature Reserve / Kviar / Isafjordur

Set out by boat to explore part of the vast Hornstrandir Nature Reserve, which can only be reached by sea. A wild, unspoiled realm of tundra, sea cliffs, flowering fields and glacier-carved fjords, this 220-square-mile landscape sits in Iceland's most remote corner and has been protected since 1974. Humans inhabited scattered settlements along Hornstrandir's bays and coves in recent centuries, although they were abandoned in the 1950s as residents sought growing job opportunities and an escape from harsh living conditions, leaving for surrounding towns. No roads, power lines or other manmade structures remain except for a few summerhouses that dot parts of the area.

Keep an eye out for marine life as we cross the bay of Isafjardardjup—we could see humpback or minke whales, white-beaked dolphins, harbor porpoises or seals. Skirting the sheer cliffs on Bjarnarnapur, we pass a dramatic rock arch (a seasonal home to cormorants and other seabirds) as Kviar comes into view. A large farm until 1948, when the family that lived here joined their neighbors in search of an easier life elsewhere, the property is now a welcoming lodge, and we stop for lunch in the cozy guesthouse. Look for protected Arctic foxes that roam freely on the land, and admire the red and orange fall foliage on a short walk.

Return to Isafjordur for a dinner of freshly caught seafood at Tjoruhusid (Tar House). This famous restaurant occupies one of Isafjordur's oldest buildings, dating to 1781. Rather than a set menu, the focus is on the day's catch prepared in uniquely Icelandic recipes, like monkfish in creamy blue cheese sauce and a renowned hearty fish chowder.

Day 10: Super Jeep Tour to Thingeyri / Dynjandi

Experience the thrill of a Super Jeep tour across rugged terrain and dramatic landscapes to Thingeyri, a small village situated on a spit of land in one of Iceland's most scenic fjords, Dyrafjordur. Pass snowy peaks en route to canyons and waterfalls as we traverse volcanic craters and lava fields that illustrate Iceland's dynamic geological activity. From mountaintop of Sandafell, we get a panoramic view over the village and fjord. After lunch in a cozy guesthouse, we head to Dynjandi, the largest waterfall in the Westfjords. This magnificent cascade falls 330 feet in a lacy, apron-like flow over terraced basalt boulders. Considered one of the country's most beautiful waterfalls, Dynjandi is a favorite of nature photographers. "Dynjandi" means "thundering" in Icelandic, an apt description of the sound and sight we encounter. On our return to Isafjordur, we have an early farewell dinner before heading to the airport for our evening flight to Reykjavik.

***Please note:** Activities in the Westfjords may take place on days or times that are different from what this itinerary indicates, depending on local schedules, weather conditions, etc.*



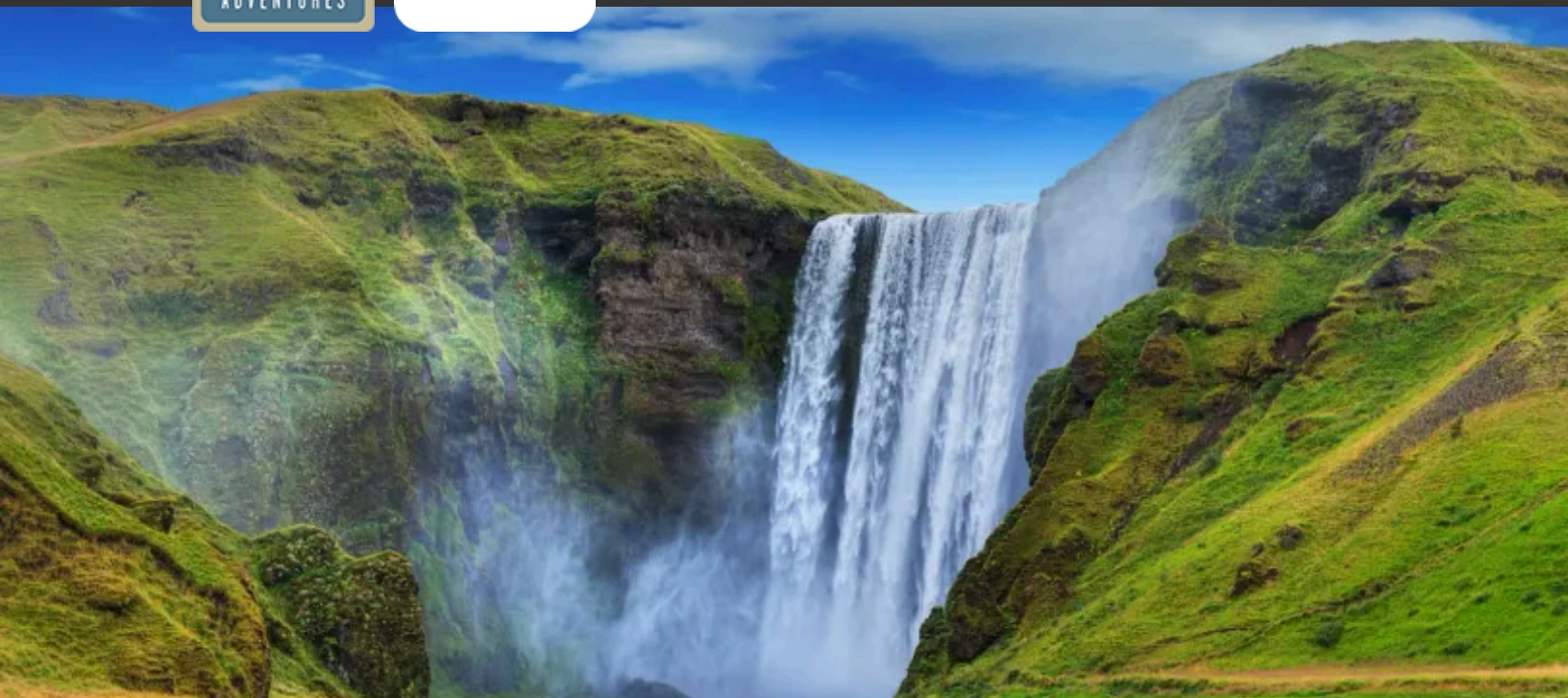
Discovering Our Planet Together

Day 11: Reykjavik / Keflavik / Depart

After breakfast, a transfer to Keflavik International Airport is included to meet departing flights.



Discovering Our Planet Together



Accommodation Details:

Hotel Reykjavik Saga

Hotel Kria

Hotel Jokulsarlon

Fjalladyrd Guesthouse

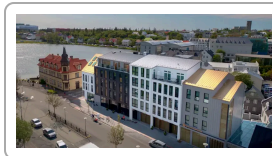
Fosshotel Myvatn

Hotel Isafjordur

For detailed descriptions, visit
nathab.com/europe/iceland-nature-adventure/accommodations

Iceland: Circling the Land of Fire & Ice Accommodations

A Full Loop Around a Nordic Realm of Waterfalls, Glaciers, Geysers & Volcanoes



Hotel Reykjavik Saga

This elegant new 4-star hotel in the heart of Reykjavik features sleek contemporary design elements and is just steps from all the city center attractions.



Hotel Kria

Named for the swift Arctic tern, Hotel Kria feature contemporary Nordic design that complements cozy mountain-view rooms, where guests can retreat after exploring the nearby black sand beach, Reynisfjara.



Hotel Jokulsarlon

This new luxury property features contemporary Nordic design along Iceland's southeast coast, spacious rooms, a restaurant with local cuisine and outdoor hot tubs and cold plunge.

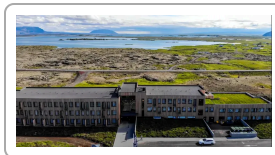


Discovering Our Planet Together



Fjalladyrd Guesthouse

In remote Modrudalur, on the highest farm in Iceland at 1,539 feet, two separate guesthouses with traditional sod roofs accommodate seven guests each, with a restaurant on the premises.



Fosshotel Myvatn

Designed by award-winning architects, this modern hotel's hillside location overlooking Lake Myvatn offers great views and the ideal location for exploring this volcanic area rich in migratory birdlife.



Hotel Isafjordur

Centrally located in the Westfjords' main town, these simple yet comfortable accommodations offer a minimalist modern Scandinavian aesthetic with views across the bay of Isafjardardjup.



NO ONE Shows You More of Iceland

Iceland is one of the world's leading travel destinations. That's why we have worked diligently to craft a unique itinerary that shows you all the best of Iceland while also getting you to less-visited places. Discover what makes Nat Hab's Iceland adventure different—and better:

1

You Will Experience SO Much More with Nat Hab

Compare carefully...while many operators offer the same limited set of Iceland highlights, we have included far more places, experiences and activities for a truly comprehensive immersion in the diversity Iceland has to offer. From private boat excursions in search of puffins and whales to a 4x4 expedition into a volcano crater, from traditional fishing villages to glaciers and geothermal features, you'll have a thorough encounter with this captivating country.

2

Circle the Whole of Iceland, and Elude Crowds

Many Iceland tours focus solely on Reykjavik and the south coast. While there are plenty of exciting natural attractions in this limited area (and thus plenty of crowds), we take you completely around the country. As far as we know, this is the only land-based (non-cruise) trip to do that. Few visitors get out to the remote Westfjords. And few explore the east coast, a tranquil region of mountains, forests, fjords and fishing villages. Using a combination of flights and scenic drives, we follow the entire perimeter of Iceland while making inland forays into natural areas where people are fewer and elements of traditional culture endure.

3

A Small Group Offers a More Authentic Experience

Conventional Iceland tours utilize large motorcoaches for groups of 30–50, but we limit our group to just 11 guests, ensuring a more peaceful experience, plus the ability to stay at smaller hotels in more remote locations. It also means you'll have personal interactions with our Expedition Leader and local Icelandic guide.

4

Just 11 Guests Travel with Two Guides, for More Flexibility

Our trip is led by a Nat Hab Expedition Leader, plus a local guide who adds an essential insider perspective. This arrangement also allows us to divide up on occasion into two smaller groups for excursions at different physical ability levels.



Discovering Our Planet Together

5

Internal & Chartered Flights Allow More Time for Exploring

While driving in Iceland is actually a highlight—its roadways offer some of the most scenic vistas in the world—distances between regions can be long, and roads are often rough and winding. That's why, where it makes sense, we've included air transfers to get you more comfortably from place to place, and to increase the time we have to explore on the ground. In one instance, we include a private chartered flight from Akureyri to Isafjordur, saving the time and hassle of a connection through Reykjavik.

6

Three Private Boat Excursions

We charter our own excursion boat or Zodiac to get you closer to nature in three different settings. A full day outing in the Westfjords includes whale watching and a puffin colony on Vigur Island; on another trip we visit a colony of seals in Lónafjörður; and at Fjallsarlón Glacier Lagoon, we cruise alongside bobbing icebergs in a private Zodiac.

7

We Seek to Avoid the Busiest Sites

While we choose to include some of Iceland's highly popular natural wonders, we mostly stay away from places and routes that are packed with tour buses and large groups (the Golden Circle being a prime example), instead featuring equally impressive yet less crowded spots. And when we do visit popular places you don't want to miss, we facilitate a quieter experience, such as arriving early before crowds form, or booking a private ice lagoon cruise just for our group.

8

Private Vehicles Offer a Window Seat for All

We charter comfortable mini buses to accommodate our small group, ensuring room to spread out and enjoy the view from your window seat. It's a big contrast from motorcoach tours where you're jostling for a look or struggling to find a spot for your jacket. Our Super Jeep 4x4 excursions also include a window seat for every guest.

9

Autumn Departures Offer a Chance to See the Northern Lights

Although we can never guarantee it, if you travel on a later-season departure, when night skies are dark once again after the long Arctic summer, you could see the aurora borealis! If it's on display and the sky is clear, our odds to spot it are good.



Discovering Our Planet Together

10

You Won't Find More In-Depth, Personalized Guiding Expertise

Unlike some tours that rely on bus drivers or expeditors for each component of your trip, we enlist our own Nat Hab Expedition Leader to oversee every aspect of your adventure. Our guide is an expert naturalist, well versed in Iceland's geology, geography, botany, history and culture, who also cares for you in a highly personal manner. We also have a local guide with us for the duration, for an insider perspective that only an Iceland resident can provide. Traveling with *two* guides, we can divide into even smaller groups for excursions at different physical ability levels. **See Expedition Leader bios** and traveler comments regarding the quality of our leaders.

11

Our Quality-Value Guarantee Ensures Your Outstanding Iceland Adventure

When you travel with Natural Habitat, you receive our exclusive guarantee, clearly stating that we will meet the lofty expectations we set in our promotional materials. To our knowledge, this is the most ambitious guarantee made by any adventure travel company. Read our important promise.

12

Feel Good About Your Carbon-Neutral Journey

We care deeply about our planet, as we know you do. When you travel with us, the carbon emissions from your trip are 100% offset—including your round-trip flights from home. Natural Habitat Adventures has been the world's first carbon-neutral travel company since 2007.

13

Natural Habitat Adventures is WWF's Travel Partner

Because of our commitment to environmentally friendly travel, as well as the exceptional quality of our worldwide adventures, we have been chosen by World Wildlife Fund—the world's leading environmental conservation organization—as its worldwide travel partner, a designation that makes us exceedingly proud.



Make It Private with Your Family or Friends

Travel privately, exclusively with your immediate family, multi-generational family or group of friends. And when you choose a private departure, you're assured the most exclusive and authentic Iceland adventure on offer. Request your private departure by completing the form below.

Please note that on Iceland Make It Private departures we require a minimum group size of 5 travelers.

Also, please be aware that your per-person cost on a Make It Private trip will vary depending on the number of travelers in your group and may be as much as 10%-30% higher (ship-based trips may be even higher) than our normal trip cost unless you fill the trip.

This **Make It Private** option is available on nearly every Nat Hab trip for family and friend groups. Call an Adventure Specialist at 800-543-8917 or look for the "Make It Private" icon in the **pricing section** of a trip online at nathab.com to see prices based on your specific group size.



Discovering Our Planet Together



Dates & Pricing Summary:

Prices:
From \$15695
(+Air)

Group Size:
Limited to 11
Travelers

Physical Requirements:
Moderate

Iceland: Circling the Land of Fire & Ice Dates, Pricing & Info

A Full Loop Around a Nordic Realm of Waterfalls, Glaciers, Geysers & Volcanoes

2025 Departures

Departure	Return	Notes
Jul 1, 2025	Jul 11, 2025	Pair with our Greenland trip
Jul 7, 2025	Jul 17, 2025	Pair with our Greenland trip Habitat Club Pricing Available
Jul 14, 2025	Jul 24, 2025	
Jul 17, 2025	Jul 27, 2025	
Jul 24, 2025	Aug 3, 2025	Pair with our Greenland trip
Jul 27, 2025	Aug 6, 2025	Women-Only Departure Habitat Club Pricing Available
Jul 31, 2025	Aug 10, 2025	Pair with our Greenland trip
Aug 8, 2025	Aug 18, 2025	Habitat Club Pricing Available
Aug 13, 2025	Aug 23, 2025	Pair with our Greenland trip



Discovering Our Planet Together

Dates & Pricing Summary:

Prices:
From \$15695
(+Air)

Group Size:
Limited to 11
Travelers

Physical Requirements:
Moderate

Departure	Return	Notes
Aug 20, 2025	Aug 30, 2025	Pair with our Greenland trip
Aug 22, 2025	Sep 1, 2025	Habitat Club Pricing Available
Aug 26, 2025	Sep 5, 2025	
Aug 31, 2025	Sep 10, 2025	
Sep 8, 2025	Sep 18, 2025	Autumn Departure Pair with our Greenland trip

2026 Departures

Departure	Return	Notes
Jul 1, 2026	Jul 11, 2026	Pair with our Greenland trip
Jul 7, 2026	Jul 17, 2026	
Jul 14, 2026	Jul 24, 2026	Pair with Iceland's Wild West
Jul 18, 2026	Jul 28, 2026	Pair with Iceland's Wild West
Jul 21, 2026	Jul 31, 2026	Pair with our Greenland trip
Jul 25, 2026	Aug 4, 2026	Pair with our Greenland trip Pair with Iceland's Wild West
Jul 27, 2026	Aug 6, 2026	Pair with our Greenland trip Pair with Iceland's Wild West
Aug 2, 2026	Aug 12, 2026	Eclipse Departure Pair with Iceland's Wild West
Aug 4, 2026	Aug 14, 2026	Eclipse Departure Pair with our Greenland trip
Aug 6, 2026	Aug 16, 2026	Eclipse Departure Pair with Iceland's Wild West
Aug 9, 2026	Aug 19, 2026	
Aug 15, 2026	Aug 25, 2026	Pair with our Greenland Photo Expedition Pair with Iceland's Wild West
Aug 24, 2026	Sep 3, 2026	Pair with Iceland's Wild West
Sep 4, 2026	Sep 14, 2026	Autumn Departure Pair with our Greenland Photo Expedition
Sep 8, 2026	Sep 18, 2026	Autumn Departure Pair with our Greenland Photo Expedition
Sep 11, 2026	Sep 21, 2026	Autumn Departure Pair with our Greenland Photo Expedition



Discovering Our Planet Together

Pricing

2025 Prices

Mouse over or tap dates above to view prices for specific departure dates.

➤ Trip Price

\$15695 to \$15995 (+internal air)



Internal Air Cost: \$1497 per person (this will be listed separately on our invoicing).

Single Occupancy: For a single room add \$1985. **Click here** to learn how you can avoid the single supplement.

Deposit: \$500 per person (nonrefundable)

Make It Private: **View pricing** to take this trip privately with just you and your select travel companions.

Trip prices are per person based on double occupancy and are given in U.S. dollars.

Please read our Payment & Refund Policy here.

2026 Prices

Mouse over or tap dates above to view prices for specific departure dates.

➤ Trip Price

\$15995 to \$16295 (+internal air)

Internal Air Cost: \$1523 per person (this will be listed separately on our invoicing).

Single Occupancy: For a single room add \$2795. **Click here** to learn how you can avoid the single supplement.

Deposit: \$500 per person (nonrefundable)

Make It Private: **View pricing** to take this trip privately with just you and your select travel companions.

Trip prices are per person based on double occupancy and are given in U.S. dollars. **Please read our Payment & Refund Policy here.**

Included

➤ **Trip price includes:** Accommodations, services of Nat Hab's professional Expedition Leader(s) and local guides, all meals from dinner on Day 1 through breakfast on final day, some gratuities, airport transfers for those arriving by air on Day 1 and departing by air on the final day, private whale watching tour, all activities and entrance fees, all taxes, permits and service fees.

➤ **Internal air includes:** Charter flight from Akureyri to Isafjordur and scheduled flight from Isafjordur back to Reykjavik (this will be listed separately on our invoicing).

Not Included

Travel to and from the start and end point of your trip, alcoholic beverages, some gratuities, passport and visa fees (if any), optional activities, items of a personal nature (phone calls, laundry and internet, etc.), airline baggage fees, required medical evacuation insurance, optional travel protection insurance.



Physical Requirements

Moderate

In order to participate in this trip, you must be able to walk unassisted at a steady pace for a minimum of 2 miles at a time over uneven terrain. Our itinerary involves daily walks or hikes of varied lengths over pavement, boardwalks, rough lava, glacial ice and earthen trails that can be muddy, slippery and uneven with roots and rocks (please note that all walks can be more difficult to navigate during inclement weather). Some hikes involve walking up and down hills. The group may also do multiple hikes a day, with total distances exceeding 3 miles. Those who would like to see the Askja Caldera will be required to walk approximately 4 miles round-trip, traversing up and down an incline. The highest elevation reached during the trip will be at the Askja Caldera, situated 3,600 feet above sea level.

Several boat trips are also included, and while we generally spend time in more sheltered waters, there can be periods of rougher water during our excursions. Travelers concerned about bumpy movement or who are prone to seasickness should take this into consideration and may wish to take precautions. One boat in the Westfjords has saddle seating and can be uncomfortable for those with back issues. All travelers must also be able to get into and out of RIB boats, Zodiacs (rigid rubber boats) and other types of boats with minimal assistance. Optional activities include a moderate, sometimes steep glacier hike that requires the use of crampons (all specialized equipment is provided) and horseback riding which involves alertness, balance and strength. The trip involves many very early morning starts and long, full days of activities with little down time. Some drives between locations are long (4-5 hours or longer, depending on local conditions). Due to the diminutive stature of the local horses, the maximum rider weight each horse can carry is 250 pounds and an alternative activity will be provided for those who are unable to ride.

On custom or private departures with smaller groups, our ability to accommodate varying levels of physical abilities or interests is limited, since these trips are staffed with a single Expedition Leader who may be assisted, pending availability, by local guides.

Important Information About This Trip

Our grand Iceland adventure is different from more typical tour offerings. Though we do include some major highlights, we deliberately take you away from the most crowded tourist spots and into more remote locales that unveil Iceland's rich natural history and traditional culture. Accordingly, we try to stay in more intimate and authentic accommodations in certain less-traveled locations. While comfortable, rooms and beds are often a bit smaller than those typically found in North America. However, the slight inconveniences are well worth it, as whatever we may forsake in space and luxury, we more than make up for in setting, surrounded by nature and solitude amid Iceland's most awe-inspiring sights. Please be prepared to spend time outdoors in unpredictable weather, which may include heavy rain and wind—or perfect sunshine.

Click [here](#) to see example photos of walks and hikes from our Iceland adventure.

And speaking of weather, while it's always changeable in Iceland, it does vary with the seasons and from one month to the next. Our trips run from July through September. July is high summer in Iceland, with the warmest annual temperatures (average high 57°F) and drier weather conditions, though it certainly can rain in July. August temperatures drop slightly, to an average of 55°F, though days become discernibly shorter by the middle of the month as the near-perpetual daylight begins to wane with the move toward autumn. September marks a vivid transition in Iceland as fall arrives, bringing crisp days and rich colors to the low-lying vegetation. The average high temperature in September is 50°F, but there are days when the high won't exceed the 40s. By September, when the Gulf Stream brings milder air from the Atlantic Ocean into contact with colder Arctic air, skies are often overcast, and rain and wind can be frequent. It's not unusual to experience four seasons in one day in September! Yet September also brings a huge drop-off in crowds, plus dark nights that offer the possibility of seeing the northern lights when the skies are clear.



Discovering Our Planet Together

Mandatory Insurance

Since the areas we travel to are remote and wild (that's why we go there!), we require that all guests have, at minimum, medical evacuation insurance for this program. This is for the safety of all guests. We require that your chosen independent insurance plan includes at least \$250,000 in medical evacuation coverage.

To protect your investment and to provide peace of mind while you travel, we also strongly recommend purchasing comprehensive travel insurance. Plans may cover everything from medical treatment to trip cancellations and delays and lost luggage. Please contact our office if you would like more information about the medical evacuation and comprehensive travel insurance policies we offer by calling 800-543-8917.

Getting There & Getting Home

Please arrive in Reykjavik no later than 3:30 pm to be ready for a welcome dinner and briefing beginning at 5:30 pm. For those arriving by air, upon arrival at the Keflavik International Airport you will be met by our representative and transferred approximately one hour to the hotel. You are free to depart Keflavik at any time on the final day of the trip.

We can best serve you if our Natural Habitat Adventures Travel Desk makes your reservations, as our staff is intimately familiar with the special requirements of our program and can arrange the most efficient travel. Please call us at 800-543-8917. Note that while we offer you the best possible rates available to us on airfare and additional nights' accommodations, you may find better fares online.



Discovering Our Planet Together



Extension Details:

East Greenland Arctic
Adventure
\$13795

Iceland: Circling the Land of Fire & Ice Extensions

A Full Loop Around a Nordic Realm of Waterfalls, Glaciers, Geysers & Volcanoes



East Greenland Arctic Adventure

Encounter raw Arctic beauty on Greenland's remote east coast near the edge of the ice sheet. From our deluxe expedition camp, explore by boat, kayak and on foot, where very few travelers venture.

\$13795 (+air)



Natural Habitat & WWF: Discovering Our Planet Together

Natural Habitat Adventures • PO Box 3065 • Boulder, CO USA 80307

USA & Canada: 800-543-8917 • International: 303-449-3711

© 2025 Natural Habitat Adventures

WWF's membership travel program is operated by Natural Habitat Adventures (Nat Hab). To date, Nat Hab has provided more than \$6 million in support of WWF's mission and will continue to give 1% of gross sales plus \$175,000 annually through 2028. WWF® and ©1986 Panda Symbol are owned by WWF. All rights reserved.