



Discovering Our Planet Together



# Grand India Photo Expedition

*An Epic Photography Quest in Search of Bengal Tigers & Other Rare Wildlife*



Discovering Our Planet Together

## Table of Contents:

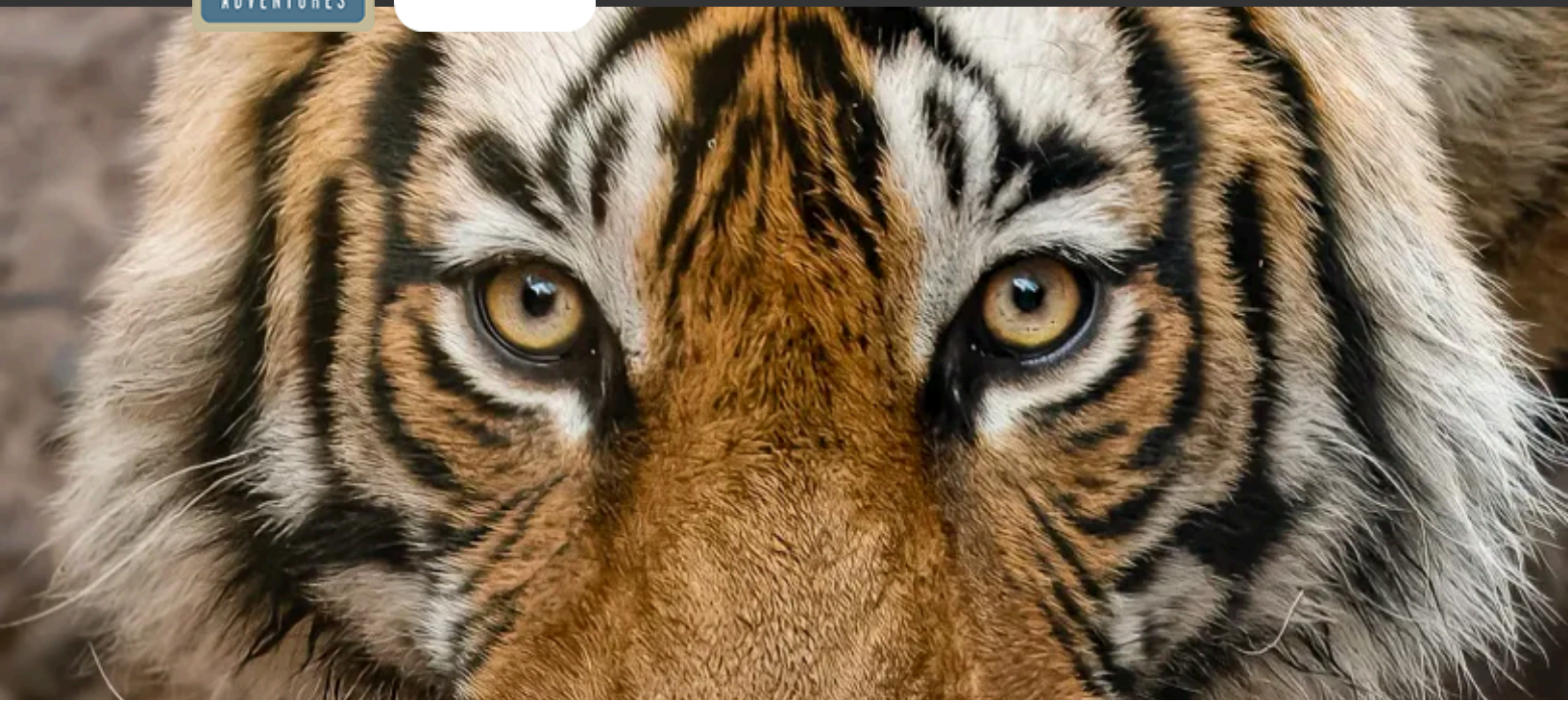
---

<b>Trip Overview .....</b>	<b>3</b>
<b>Trip Itinerary .....</b>	<b>4</b>
<b>Trip Accommodations .....</b>	<b>13</b>
<b>What Makes Nat Hab Different? .....</b>	<b>15</b>
<b>Dates &amp; Pricing Information .....</b>	<b>18</b>
<b>Trip Extensions .....</b>	<b>24</b>





Discovering Our Planet Together



#### Trip Details:

**Days**

14 Days /  
Jan–May

**Price**

From  
\$15995

## Grand India Photo Expedition

### An Epic Photography Quest in Search of Bengal Tigers & Other Rare Wildlife

India is a mesmerizing destination for photographers. While its collage of colors and cultures has long drawn the traveler's lens, India's wild habitats and exotic animals offer rare treasures for those passionate about nature. Spanning three national parks, this wide-ranging photo safari immerses you in a landscape of fabled jungles and powerful rivers, brimming with wildlife. From Bandhavgarh to the Brahmaputra basin, this is the native territory of the endangered Bengal tiger, one-horned rhino, Asian elephant, sloth bear and more. Gain exclusive access and shoot alongside top naturalist photographer guides.

### Trip Highlights

**While tigers get top billing, India's wildlife is diverse—look for sloth bear, Indian bison, elephant, wild dog, leopard, rare barasingha and other intriguing species**

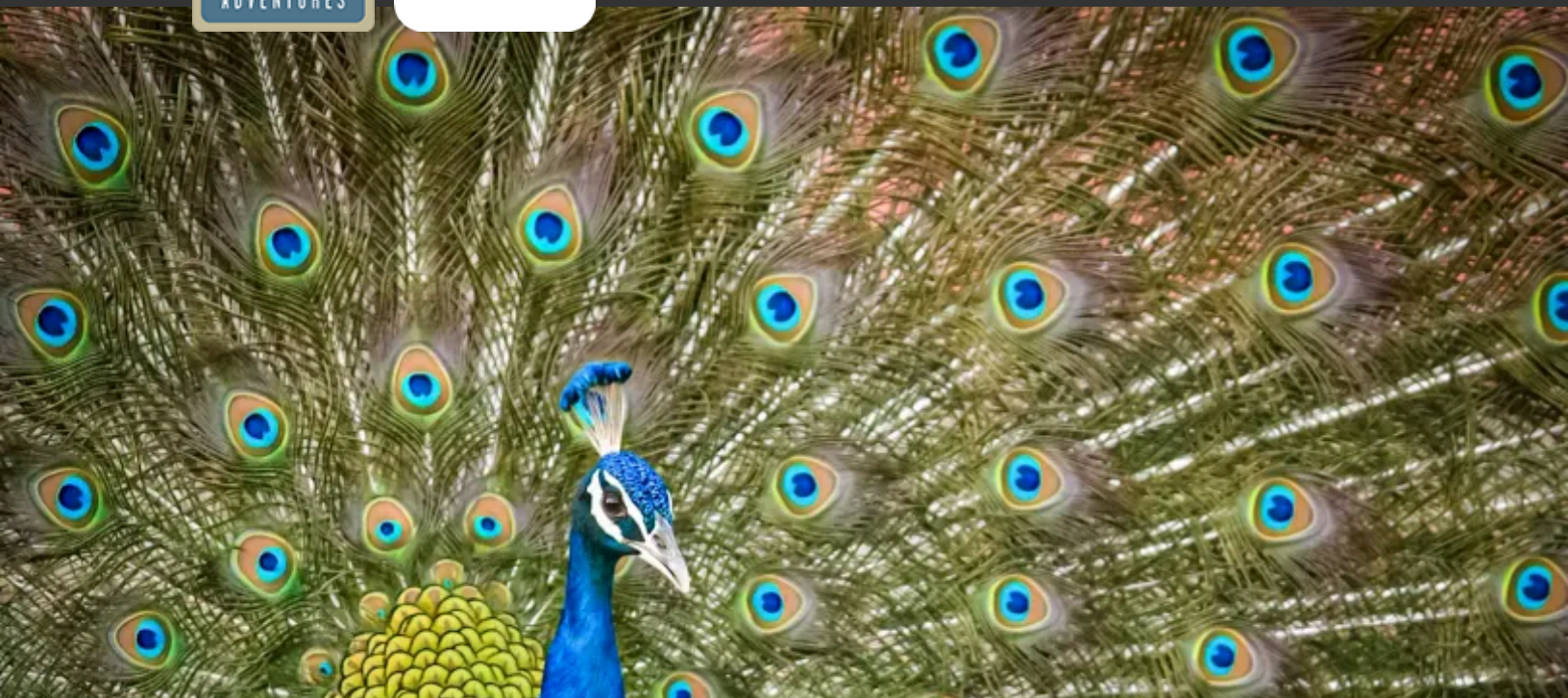
**Photograph highlights of Delhi, then head to the tiger territories of Bandhavgarh and Kanha, and the tropical plains of Kaziranga with its 2,600 rhinos**

**Our special permits allow us to spend more hours inside the national parks than typical tours get, to maximize our time for wildlife photography**





Discovering Our Planet Together



## Itinerary At A Glance

### Day 1

New Delhi, India / Delhi Photo Tour

### Day 2

Fly to Jabalpur / Bandhavgarh National Park

### Days 3 & 4

On Safari in Bandhavgarh National Park

### Day 5

Bandhavgarh / Kanha National Park & Tiger Reserve

### Days 6 - 8

Wildlife Photography in Kanha National Park

### Day 9

Village Photography / Raipur / Fly to Kolkata

### Day 10

Kolkata / Jorhat / Kaziranga National Park

## Grand India Photo Expedition Itinerary

An Epic Photography Quest in Search of Bengal Tigers & Other Rare Wildlife



### Day 1: New Delhi, India / Delhi Photo Tour

Arrive in New Delhi and transfer to our luxury hotel in the leafy heart of Lutyens' Delhi, with its broad boulevards, historic homes and government enclaves. The district is named after British architect Edwin Lutyens, who was responsible for much of the architectural design and building during the period of the British Raj, when India was part of the British Empire from the 1920s to 1940s.



This afternoon, set out on a photographic odyssey through the sprawling, vibrant city. Our tour begins at Gurudwara Bangla Sahib, a memorial to Mahatma Gandhi and one of the country's most revered Sikh temples. We'll capture the temple's luminous white architecture, reflections in the holy pool, and the movement of worshippers and volunteers in the bustling community kitchen that generously serves more than 10,000 free meals each day, all cooked by volunteers using donated ingredients from Sikh farmers. Continue to Agrasen ki Baoli, an ancient stepwell whose repeating arches and long descending staircase offer striking opportunities for geometric compositions, leading lines and studies of light and shadow. Next, take a scenic drive through Lutyens' Delhi, photographing city icons as we pass the India Gate, the President of India's residence and the new Parliament building—an ideal chance to work on framing and timing from a moving vantage point. At the Gandhi Museum, focus on storytelling images that reflect Gandhi's life and legacy. If the museum is closed or if time permits, we will visit Humayun's Tomb as a final stop, practicing wide-angle shots and symmetry at this Mughal architectural masterpiece. Return to our hotel with time to refresh before a welcome dinner this evening, plus an orientation by our Expedition Leader to all the India photography adventures that lie ahead.



Discovering Our Planet Together

## Itinerary At A Glance

### Days 11 - 13

Photo Safaris in Kaziranga National Park

### Day 14

Kaziranga / Guwahati / Delhi / Depart

## Day 2: Fly to Jabalpur / Bandhavgarh National Park

Transfer to the airport very early this morning for our flight south to Jabalpur. Continue on a half-day's drive through the countryside of Madhya Pradesh to reach Bandhavgarh National Park. The journey offers vignettes of everyday Indian life—village markets, roadside tea stalls and ox-drawn carts—and we will pause, when appropriate, for candid cultural images. By afternoon, we arrive at our ecolodge set in the forest just outside the park boundary. An essential stop on any serious India safari, Bandhavgarh is renowned for one of the country's highest concentrations of Bengal tigers. Originally established as a national park in 1968, Bandhavgarh was declared a protected tiger reserve under Project Tiger in 1993. At 444 square miles, it is a relatively small park with a thriving tiger population, offering visitors a good chance of encountering them, as well as other distinctive Indian wildlife. After settling in to our lodge, if time permits, we'll set out on a short wildlife drive in open 4x4 safari vehicles. Our Expedition Leader helps you dial in camera settings for fast-moving wildlife and changing light as we start searching for our first Bengal tiger.





### Days 3 & 4: On Safari in Bandhavgarh National Park

The next two days are devoted to intensive exploration of Bandhavgarh National Park in pursuit of exciting wildlife images. Covered predominantly with sal and mixed deciduous forest, thickets of bamboo and expansive grasslands that line the stream valleys, the park's hilly terrain harbors one of the world's highest densities of tigers. Bandhavgarh was once a prime hunting reserve for the Maharajas of Rewa, where Maharaja Raman Singh alone shot an astounding 111 tigers by 1914. Today it is a pacesetter in tiger protection. With tigers at the apex of the food chain, Bandhavgarh's rich biodiversity includes a multitude of other wildlife. We expect to photograph a broad sampler of its 37 mammal species, among which are leopard, jungle cat, civet, wild boar, sambar, spotted deer, muntjac (barking deer), gaur, sloth bear and Asiatic jackal. Some 250 bird species, 70 different butterflies and various reptiles round out the diverse wildlife population.

We have extended time in the field on morning and afternoon game drives, and one day will include a full-day safari, tapping our exclusive permit giving us extra time in the park. Across Bandhavgarh's varied landscapes, we search for Bengal tigers while also focusing on the park's full array of wildlife: spotted deer stepping through morning mist, sambar grazing in meadows, langurs framed by backlit dust, and its diverse birdlife, including showy peacocks. Your Expedition Leader and local naturalist guides work together to position our vehicles for optimal angles and unobtrusive wildlife viewing.

On our full-day safari, picnic meals in designated zones allow us to remain all day, so we can stay close to promising areas, follow tracks and alarm calls without interruption, and document the subtle changes in light and animal behavior throughout the day. Your Expedition Leader provides guidance on photographing fast-moving subjects, managing batteries and memory cards on long days, and using environmental elements—light, dust, vegetation—to elevate your wildlife storytelling.

Back at the lodge, gather for informal photo discussions and review techniques such as tracking autofocus, panning, exposure compensation for striped fur, and composing sequences that capture a scene's unfolding narrative.



### Day 5: Bandhavgarh / Kanha National Park & Tiger Reserve

A half-day's drive takes us from Bandhavgarh to Kanha National Park. Along the way, capture passing photos of forested landscapes and village scenes that offer glimpses of daily life in rural Madhya Pradesh. Situated in the Satpura Hills of central India, Kanha National Park covers 750 square miles of rich and varied wildlife habitat. Its lush sal and bamboo forests, grassy meadows and ravines provided inspiration to Rudyard Kipling for his famous collection of stories in *The Jungle Book*. Kanha was established as a national park in 1955 and forms the core of the Kanha Tiger Reserve, created in 1974 under India's Project Tiger. The park's landmark achievement is the preservation of the rare barasingha, an endangered swamp deer with 12-point antlers, saving it from near-extinction. Strict conservation programs for the overall protection of the park's fauna and flora make Kanha one of the most exemplary national parks in Asia.

From our luxurious ecolodge base in the tiger heartland of the world, learn in depth about the Bengal tiger and its habitat and observe how conservation travel directly benefits local communities and the tiger reserve. Following lunch on arrival, gain an introduction to the region on an initial short safari in the park. From our open 4x4 vehicles, search for barasingha swamp deer, gaur, langurs, wild boar, birds and, with luck, our first glimpse of a tiger glimpse in Kanha. Back at the lodge, enjoy dinner outdoors (weather permitting), with a briefing by your Expedition Leader on tomorrow's adventures.





### Days 6 - 8: Wildlife Photography in Kanha National Park

Scenic Kanha, once a hunting ground for imperial rulers and viceroys, is now one of India's most important conservation reserves. With ideal habitat for Bengal tigers and their prey, Kanha offers some of India's best tiger photo opportunities, plus a diverse collection of other wildlife. We spend three days pursuing photos in this premier national park, searching for tigers and other wildlife from open 4x4 vehicles. Over the course of our stay, we explore Kanha's diverse landscapes of sal forests, bamboo thickets and rolling meadows on a series of morning and afternoon game drives, one full-day photo safari, and a guided nature walk in the park buffer zone.

Each day brings new photographic opportunities. The open meadows where herbivores graze attract tiger, leopard and dhole (wild dog) to the edges of the clearings, and we'll hope to photograph some of these predators on the hunt. The Banjaar River bordering the park provides a steady water source for wildlife. Dense jungle interspersed with vast grassy meadows called *maidans* support a range of species similar to those in Bandhavgarh. Other mammals we might photograph include the magnificent 12-point barasingha (swamp deer), common langur, gaur (the world's largest wild ox), wild boar, macaques, langurs and a rich array of birds. Early light often filters through the forest in dramatic shafts—ideal for portraits and environmental compositions—while late-afternoon glow creates warm tones for action shots and animal behavior. On one of our days in Kanha, we undertake a full-day safari, remaining in the field from early morning until late afternoon with picnic meals in designated areas. Uninterrupted time greatly increases our chances of encountering wildlife as it moves between habitats. With fewer entries and exits, photographers can follow fresh tracks, respond immediately to alarm calls, and remain in promising areas as light and behavior shift throughout the day. Throughout this extended outing, we focus on advanced fieldcraft: anticipating direction of movement, composing animals against clean backgrounds, and creatively using midday light.

During our time in Kanha, we will take a guided nature walk in the buffer zone, where we slow down and focus on intimate subjects not easily appreciated from a vehicle: animal tracks, butterflies, blooming plants, textures, patterns in bark and leaves, and the interplay of light and shadow along the forest floor. This is an excellent opportunity to practice close-up and macro photography, experiment with depth of field, and create images that round out the visual narrative of the region.

Between excursions, return to our ecolodge to rest and review images in an unhurried, collaborative environment. Optional midday discussions cover topics such as metering for striped fur, improving composition confidence, managing camera settings for fast-changing conditions and building a cohesive set of images across the wider expedition. On one evening, after we gather for dinner, join in some festive dancing around the campfire during a cultural presentation at our lodge.



## Discovering Our Planet Together

### Day 9: Village Photography / Raipur / Fly to Kolkata

This morning, visit a nearby village to learn about the Indigenous Baiga and Gond communities who have lived within these forests for generations as hunter-gatherers in the intricate jungle web of life. It's a rich opportunity for ethical cultural photography as we are hosted by a local family in their home, learning about their daily routines while observing the villages' colorful homes and local heritage. Your Expedition Leader guides the group in approaching subjects respectfully and choosing lenses that allow for meaningful context rather than overly tight framing.

Following our visit, we return to the lodge, then depart on a half-day drive to Raipur, watching scenes of daily rural life unfold along the roadside as we make our way to the airport for our flight to Kolkata late this afternoon. On arrival, transfer to a comfortable hotel near the airport for a restful night's sleep after a long day of travel, as we transit from one region of the country to another. Take time to relax, back up images and recharge equipment before returning to the airport for our early flight to northeast India tomorrow morning.

### Day 10: Kolkata / Jorhat / Kaziranga National Park

After breakfast, depart for our flight to Jorhat and continue by road into far-eastern India to reach Kaziranga National Park in the state of Assam. Our drive through the countryside offers bucolic images of tea estates, rice paddies and villages in an entirely new geographic and cultural setting. We stay at Diphlu River Lodge near the park, whose verdant grounds contain more than 40 species of trees and some 200 species of shrubs, creepers and climbers. Once we're settled in, we gather for dinner, with time afterward to prepare our gear for the exciting photo safaris that lie ahead.

Kaziranga is one of India's great conservation success stories. The national park, which borders the sacred Brahmaputra River, was created in 1926 as a refuge for the one-horned rhinoceros. Once hunted nearly to extinction, this 2-ton beast today is a conservation success story, its population rebounding to more than 2,600 individuals. Two-thirds of the world's one-horned rhinos are found within the park, and we're sure to see plenty of them grazing in the open, offering excellent close-range photos. In addition to the rhino, Kaziranga is home to some of India's other largest mammals including Asian elephant, Asian water buffalo and barasingha, the 12-point swamp deer.





## Discovering Our Planet Together

### Days 11 - 13: Photo Safaris in Kaziranga National Park

During our three days in Kaziranga National Park, explore the lush floodplains of Assam, traversing the park's distinct habitats for a varied and well-rounded photo safari. On morning and afternoon wildlife drives, explore the marshes, elephant-grass meadows, thorny rattan cane and wooded hillsides that make this UNESCO World Heritage Site one of India's most photogenic wildlife destinations. Stretching from the banks of the Brahmaputra River to the dense forests of the Mikir Hills, the park hosts an impressive diversity of animals. On multiple game drives in open 4x4 vehicles, search for Kaziranga's famous one-horned rhinoceros, Asian elephant, wild water buffalo, sloth bear, hoolock gibbon, hog deer, swamp deer, wild boar, python, and, with luck, the endangered Bengal tiger. Although Kaziranga boasts a healthy tiger density, the tall elephant grass makes photographing them a challenge.

Each range offers its own photographic character: open meadows where rhinos graze, forest edges alive with birdlife and shade-seeking elephants, and shallow wetlands reflecting pond herons and black-necked storks in soft morning or afternoon light. The national park has been declared an Important Bird Area by Birdlife International and is home to a great variety of resident and migratory birds. Drawn to the life-giving artery of the Brahmaputra River, waterfowl abounds, and we may see egrets, river terns, fishing eagles and pelicans. In the river, look for otters and rare Gangetic dolphins. As we travel through these landscapes, refine your skills in long-lens technique, behavior anticipation, and environmental composition inspired by the broad vistas shaped by the mighty Brahmaputra.

One day is dedicated to Kaziranga's Eastern Zone, the Agoratoli Range. This area is more wooded, biologically diverse and far less visited than the park's Central and Western ranges. Because of its quieter environs and rich mosaic of habitats, the Eastern Zone often yields rare or unusual sightings, and many photographers consider it one of Kaziranga's most rewarding sectors. Wildlife encounters here feel intimate, and less vehicle traffic allows for unhurried observation and creative image-making. We'll leave early for a full morning safari, followed by a picnic lunch before returning to our lodge for the afternoon.

During midday breaks, relax at the lodge with time to download images, lounge by the river, read book over a cup of Assam tea shaded by thatch and bamboo, or book a massage at the jungle spa. Conditions permitting, on one afternoon we may get to meet one of the park's working elephants, along with the resident mahout who cares for it. These elephants, which accompany rangers on regular patrol missions, are accustomed to interacting with guests. An elephant will be brought to our lodge where we can interact with and photograph it, capturing close-up portraits and expressive details that highlight the deep bond between elephant and handler. By the time we depart Kaziranga, you will head home with a rich mix of wildlife, landscape and cultural images. On our final evening, revel in memories of our Indian safari adventures as we gather for a farewell dinner.



#### Day 14: Kaziranga / Guwahati / Delhi / Depart

After breakfast, we drive to Guwahati to meet our afternoon flight back to Delhi. Upon arrival at the Delhi airport, transfer to our nearby hotel, just minutes away. An overnight stay is included along with a transfer to the international airport to meet departing flights, most of which leave late tonight.

**Please Note:** National parks in central India are closed on Wednesday afternoons and on Holi, which typically falls in March. If any portion of our visit to Kanha or Bandhavgarh coincides with these closures, we will have alternate activities planned in place of scheduled safari(s). When closures occur on Holi, guests may have the opportunity to experience this vibrant and culturally significant festival.



Discovering Our Planet Together



## Accommodation Details:

Kings Lodge

Singinawa Jungle Lodge

Taj City Center New Town  
Kolkata

Diphlu River Lodge

Roseate House New Delhi

Taj Mahal Hotel, New Delhi

For detailed descriptions, visit  
[nathab.com/asia-adventure-travel/grand-india-photo-expedition/accommodations](http://nathab.com/asia-adventure-travel/grand-india-photo-expedition/accommodations)

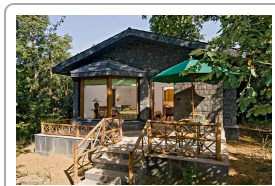
# Grand India Photo Expedition Accommodations

An Epic Photography Quest in Search of Bengal Tigers & Other Rare Wildlife



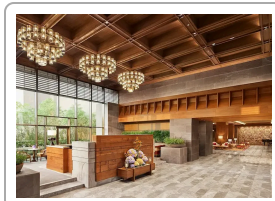
## Kings Lodge

Nestled with the sal and bamboo forest on a large estate minutes from Bandhavgarh National Park, this esteemed ecolodge feels at one with nature and is a pacesetter when it comes to sustainable practices.



## Singinawa Jungle Lodge

This lodge reflects the practice of the Sherpa philosophy of *singinawa*—protection of the sacred forest—and offers all the comforts of a full-service resort within the wild environs of India's tiger heartland.

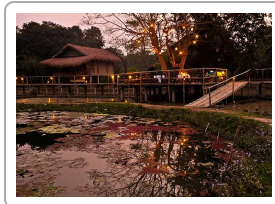


## Taj City Center New Town Kolkata

The Taj City Center New Town Kolkata is conveniently located near the airport for ease in transferring between destinations, with all the amenities of a premier full-service hotel.

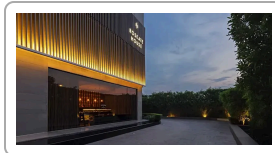


## Discovering Our Planet Together



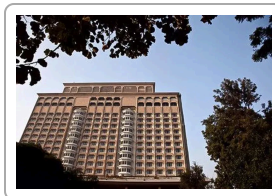
### Diphlu River Lodge

Featuring an expansive common area on raised decks and 12 stilted cottages built with local bamboo and thatch, this acclaimed ecolodge feels at one with the jungle environs—and it's a pacesetter for sustainability.



### Roseate House New Delhi

A modern sanctuary in New Delhi's vibrant Aerocity, Roseate House is a luxurious urban retreat, offering contemporary rooms, world-class dining, and personalized service—all just minutes from the airport and metro station.



### Taj Mahal Hotel, New Delhi

A distinguished address in India's leafy capital district, this 5-star hotel is a New Delhi landmark, with elegant interiors and finely appointed rooms reflecting traditional Mughal heritage in art, antiques and ambience.





## The Most Comprehensive India Photo Safari You'll Find

When you're intent on the optimal India safari to photograph tigers and a wide diversity of India's wildlife, maximizing your time in nature and your odds for capturing exciting shots, it's imperative to choose a trip designed expressly to accomplish that—and that is our Grand India Photo Expedition! Check out what sets this photography adventure apart:

### 1 An All-Encompassing Wildlife Itinerary

This is the ultimate India photo safari for nature lovers. Boost your chances of seeing Bengal tigers—plus a host of other Indian wildlife—on visits to three different national parks that are home to some of India's most concentrated tiger populations. Most travelers go to Ranthambore National Park at peak season, which is heavily advertised and very crowded. We visit equally appealing Bandhavgarh National Park instead, plus Kanha and Kaziranga, which are more remote with far fewer tourists. Kanha also offers some of India's best tiger-viewing possibilities, while Kaziranga offers close encounters with rhinos and wild elephants. We also have a chance to see sloth bears, wild Indian bison, seven deer species and 600-plus bird species among an impressive diversity of wildlife.

### 2 Photography-Focused Activities & Timing

Throughout our itinerary, you'll benefit from experiences designed to enhance and improve your photography. Our Expedition Leader will offer detailed instruction in classes and workshops with personalized guidance for photographers of all ability levels. We also plan our timing for extended shooting sessions in key locations, allowing time for patience in sightings, following animal behavior, and seeking the best light conditions.

### 3 Special Permits for Extended Time in Bandhavgarh and Kanha National Parks

We have procured two full-day permits (one in each park) allowing us to remain in the field for an entire day at a time, with picnic meals. Most park access is limited to morning and afternoon entries, but this exclusive opportunity allows us to track and observe wildlife at a more patient and uninterrupted pace, which is often the key to getting the best wildlife shots. See the "Important Information" section for below for more details on full-day permits.

### 4 Rare Access to Kaziranga National Park's Eastern Zone

Our Photo Expedition spends an extra night in Kaziranga National Park, compared to our classic Grand India Wildlife Adventure, allowing us to get farther afield and into the park's remote Eastern Zone for enhanced photography opportunities. Few safaris in Kaziranga include this region, which is replete with diverse wildlife.



## Discovering Our Planet Together

### 5 Shoot Alongside India's Finest Naturalist-Photographer Guides

Our India Photo Expedition Leaders average more than 15 years' experience, with top-level training including resources from WWF scientists. They are highly accomplished wildlife photographers and professional naturalist guides, and you won't find more knowledgeable, personable or enthusiastic leaders to travel with. Our philosophy is simple: a photo safari is only as good as the guide who leads it, so we provide the very best! **See Expedition Leader bios** with traveler comments regarding the quality of our leaders.

### 6 A Small Group—Capped at 9 Guests—for More Authentic Nature Experiences

You'll travel in a group of just nine photographers, accompanied by our Photo Expedition Leader. This smaller size is in contrast to our classic Grand India Wildlife Adventure, which is limited to 11 guests. Our quiet presence ensures a lower impact in nature reserves and personal encounters with wildlife and local people.

### 7 Delhi Photo Tour Included

While our focus is on nature and wildlife, India's cultural heritage and contemporary life also offers captivating photography subjects, and we make sure you don't miss out. You'll have a chance for photo opportunities in Delhi on a half-day tour, plus plenty of chances to capture scenes of village life and activities along our itinerary.

### 8 Distinctive Accommodations Ensure Your Every Comfort

In India's natural areas, we carefully choose environmentally sensitive ecolodges for their proximity to wild places and their amenities that promise an exceptionally comfortable stay. In the cities, India's luxury urban hotels are renowned worldwide, the 5-star properties we choose will impress you with their hospitality, service and welcome indulgences before and between our safari adventures.

### 9 Our Presence Directly Helps Protect Tigers

After years of precipitously declining tiger numbers, India is charting steady increases. Its 2022 quadrennial tiger census counted 3,682 tigers, up from 2,967 in 2018, an annual rise of 6%. Conservation groups attribute a share of the increase to responsible ecotourism. The economic value of visitors to India's tiger reserves benefits local communities, offering people an incentive to protect the wildlife they share the land with. Given that India is home to 75% of the world's remaining wild tigers, our presence here for wildlife tourism here is integral to that continued success.

### 10 Our Quality-Value Guarantee Ensures Your Outstanding India Photo Safari

With Natural Habitat Adventures, you receive our exclusive quality value guarantee that promises we will meet the high expectations we set forth in our promotional materials. To our knowledge, this is the most ambitious guarantee made by any adventure travel company. **Read our important promise.**



Discovering Our Planet Together

#### **11** Feel Good About Your Carbon-Neutral Journey

We care deeply about our planet, as we know you do. When you travel with us, the carbon emissions from your trip are 100% offset—including your round-trip flights from home. Natural Habitat Adventures has been the world's first carbon-neutral travel company since 2007.



Discovering Our Planet Together



## Dates & Pricing Summary:

**Prices:**  
From \$15995

**Group Size:**  
Limited to 9  
Travelers

## Grand India Photo Expedition Dates, Pricing & Info

An Epic Photography Quest in Search of Bengal Tigers & Other Rare Wildlife

### 2027 Departures

Departure	Return	Notes
Jan 11, 2027	Jan 24, 2027	\$15995 USD (+internal air)
Feb 17, 2027	Mar 2, 2027	\$15995 USD (+internal air)
Mar 9, 2027	Mar 22, 2027	\$15995 USD (+internal air)
Apr 10, 2027	Apr 23, 2027	\$15995 USD (+internal air)
May 4, 2027	May 17, 2027	\$15995 USD (+internal air)

### 2028 Departures





Discovering Our Planet Together

## Dates & Pricing Summary:

**Prices:**  
From \$15995

**Group Size:**  
Limited to 9  
Travelers

Departure	Return	Notes
! Prices and dates not confirmed for 2028		
Jan 28, 2028	Feb 10, 2028	\$15995 USD (+internal air)
Feb 8, 2028	Feb 21, 2028	\$15995 USD (+internal air)
Feb 22, 2028	Mar 6, 2028	\$15995 USD (+internal air)
Mar 6, 2028	Mar 19, 2028	\$15995 USD (+internal air)
Mar 22, 2028	Apr 4, 2028	\$15995 USD (+internal air)
Apr 1, 2028	Apr 14, 2028	\$15995 USD (+internal air)
Apr 15, 2028	Apr 28, 2028	\$15995 USD (+internal air)
May 1, 2028	May 14, 2028	\$15995 USD (+internal air)



## Pricing

See <https://nathab.com/asia-adventure-travel/grand-india-photo-expedition/dates-fees> for the latest pricing details.

## Included

- Trip price includes: Accommodations, services of Nat Hab's professional Expedition Leader(s), local guides, lodge and park staff, all meals from dinner on Day 1 through lunch on final day, some gratuities, still camera fees, airport transfers on Day 1 and final day, all activities and entrance fees, all taxes, permits and service fees.
- Internal air cost includes: All flights within the itinerary (this will be listed separately on our invoicing).

## Not Included

Travel to and from the start and end point of your trip, alcoholic beverages, some gratuities, passport and visa fees, activities outside of itinerary, items of a personal nature (phone calls, laundry and internet, etc.), airline baggage fees, required medical evacuation insurance, optional travel protection insurance. Note: India requires additional fees for video camera usage in parks, which is not included in your trip fee.



### Important Information About This Trip

#### *Wildlife Encounters*

Our guests choose a trip to India for encounters with the country's unique wildlife. While the nature experiences here are exciting, there is a fundamental difference between the wildlife experience in the Indian jungle and a typical African safari. At times, guests who are lured to India by tourist brochures promising "tiger safaris" can be disappointed to see fewer animals than they expected, or at least fewer than they might normally see in Africa. It is not that the surviving jungles are thinly populated with wildlife, but, similar to places like Costa Rica where the forest vegetation is dense, animals have mastered the art of camouflage in thick cover and can be extremely difficult to spot. We design our itineraries to capitalize on the best places to see tigers. But various factors can affect potential sightings, including inclement weather, which creates small pockets of water that allow the animals to remain hidden in the forest, rather than being driven into the open to drink. There is no doubt that India's nature, and the forests Kipling immortalized, offer wondrous discoveries. The secret for visitors lies in the assistance of expert guides – and we have been told that we have the best! – as well as knowing what to expect, and in understanding that the privilege of stepping into a wild natural realm is a reward in itself.

#### *The Seasons*

There are many advantages to traveling at the time of year that we operate our India adventure. By January, the parks have almost completed their transition out of the post-monsoon period: vegetation has begun to thin, water sources are steadily shrinking, and wildlife movements—especially those of tigers—reaches a high. During this season, tigers are consistently on the move and walk the game trails extensively, which makes sightings exciting. This is also the height of the tiger mating season, when males and females vocalize, scent-mark and patrol their territories more actively, creating dynamic opportunities to observe and photograph natural behavior. Many species, including tigers and hardground swamp deer, still carry their rich winter coats in early January, adding depth and beauty to portrait images. As the season progresses into March, April and early May, visibility continues to improve as foliage dries and opens up, and animals concentrate more reliably around known waterholes. These warmer months often deliver some of the best chances for clear, unobstructed sightings, as wildlife seeks out shade and water during predictable parts of the day. At the same time, the rising temperatures mean that animals may rest longer in cooler, shaded areas and may be less active during mid-day hours—an important natural rhythm your Expedition Leader will take into account when planning each day's strategy. Throughout the winter and spring, birdwatching remains excellent, with a mix of resident species and overwintering migrants adding color and movement to the landscape. Morning mist, golden light filtering through sal forests and open meadows, and the soft hues of the dry season all contribute to the atmospheric conditions that make central India such a rewarding destination for photographers.

#### *Safari Vehicle Routes & Seating Allocation*

Rather different than in nearly every other country we travel to, in India the driving routes in national parks are pre-assigned and must be followed. In most parks this is generally not a problem, but when searching for tigers this can be frustrating as they simply may not be visible on a given route on a given day. Our hope is that we are able to utilize different routes on different days. However, the park service allocates routes at random for each vehicle, so there is no guarantee that vehicles will get a different route for each wildlife drive. We understand that one of the goals for your journey is to view tigers, but please understand that there is a chance that the vehicle to which you are assigned could take the same route multiple times. Thank you for participating in this adventure knowing that this may be the case. Indian park regulations are also extremely strict with regard to seating arrangements on wildlife drives. Requirements dictate that guests be confirmed in specific vehicles upon booking, well in advance of the departure date, and we are unable to change vehicles while we are exploring each park. To the best of our ability, we attempt to ensure that guests who are traveling with a partner or friend will have seats together during wildlife drives. Because



## Discovering Our Planet Together

couples or friends are booked together in the same vehicle and are unable to split up during drives, it may mean that in some instances, certain vehicles will contain fewer guests than others. It is also important to understand the limitations based on available vehicle space. Each open safari vehicle has two front seats and two rows of bench seats. Regulations require that the front two seats be occupied by a park ranger and registered driver. Our Expedition Leader and local guides are allowed more flexibility and will switch among vehicles for each drive so that all guests are able to spend equal time with them. However, this means that as our Expedition Leaders and local guides rotate vehicles, there may be times when there will be three people (two guests and one Expedition Leader or local guide) to a row—our Expedition Leader/local guides may be required to sit in the rear left seat of the vehicle. Please know that while there are indeed limiting factors to the tiger viewing experience in India, we have taken great pains to ensure that this special India tiger and wildlife safari with Nat Hab provides the best viewing experience possible.

### *Full Day Permits*

Full day photography permits in Bandhavgarh National Park and Kanha National Park (and other tiger reserves in Madhya Pradesh) allow you to stay inside the park from sunrise to sunset, giving you far more time and flexibility than the standard morning and afternoon safari slots. These permits are subject to the parks' rules and availability. With a full day permit, you will have zone-free access, meaning you are not restricted to just one of the usual designated safari zones; you may move across zones during the day to respond to wildlife sightings and changing light conditions. The number of vehicles on full day permits is strictly limited, which helps reduce competition and increases your chances of meaningful photographic encounters. Because you are in the park all day, you'll have the opportunity to capture wildlife under varied conditions — early-morning mist, mid-day light, and late afternoon golden glow — and you'll be able to stay on location when others leave the park for lunch, giving you a competitive advantage for capturing behavior and animals in less crowded circumstances. That said, these permits do not guarantee sightings of particular species (such as tigers), nor do they exempt you from following park rules: you must stay in the vehicle unless walking is expressly permitted, you must stay on designated tracks, you must respect minimum distances from wildlife, and you must depart the park at the official gate-close time (or the modified timing for full day permit holders). We make every effort to secure full day permits for the entire group on the same day; however, because the number of these permits is extremely limited, travelers in our group may occasionally have their full day safaris on different days. Rest assured that all guests will receive one full day safari in Bandhavgarh and one in Kanha, subject to park regulations and availability. In the event that the group's full day permits fall on different days, your Expedition Leader will ensure that each guest is fully supported and set up for an outstanding experience while they are on the full day safari. Guests who are not on the full day safari that day will enjoy the other activities outlined in the itinerary, accompanied by an exceptional lodge naturalist.

### *Cell Phone Ban in Bandhavgarh and Kanha National Parks*

Tiger reserves in the state of Madhya Pradesh, which includes Bandhavgarh and Kanha National Parks, have a strict ban on the use of cell phones by all visitors within the park's Core Zone, with no exceptions. Guests are not allowed to use cell phones for any purpose, including photography and taking videos, anywhere within the park. This ban is in place to reduce disturbance to wildlife, enhance the safari experience, and combat the use of location tags by poachers to track tigers. It also supports traditional tiger tracking methods through word of mouth, which minimizes the number of vehicles at sightings. Tiger sightings take on a whole new level of intimacy when cell phones are set aside, ensuring a more respectful and less intrusive experience for both humans and wildlife.

To facilitate photography in the park, Nat Hab has developed an exclusive program with Lensrentals, a premier lens rental company, which allows our travelers to rent high-quality cameras, lenses, spotting scopes, tripods, flashes, backpacks and other equipment at a 15% discount. To review the available options,





## Discovering Our Planet Together

visit [lensrentals.com](https://lensrentals.com). To obtain the discount, add the code "NATHAB15" to the "Promo Code" box and hit "Apply" upon checkout.

### Mandatory Insurance

Since the areas we travel to are remote and wild (that's why we go there!), we require that all guests have, at minimum, medical evacuation insurance for this program. This is for the safety of all guests. We require that your chosen independent insurance plan includes at least \$250,000 in medical evacuation coverage.

To protect your investment and to provide peace of mind while you travel, we also strongly recommend purchasing comprehensive travel insurance. Plans may cover everything from medical treatment to trip cancellations and delays and lost luggage. Please contact our office if you would like more information about the medical evacuation and comprehensive travel insurance policies we offer by calling 800-543-8917.

### Getting There & Getting Home

This trip begins and ends in Delhi. Because this is a long international journey with considerable travel time and time-zone adjustment, **we recommend that you arrive the night before Day 1** to rest from your travels and begin the trip refreshed. For guests who come in early, our recommended hotel will be included in your pre-departure materials.

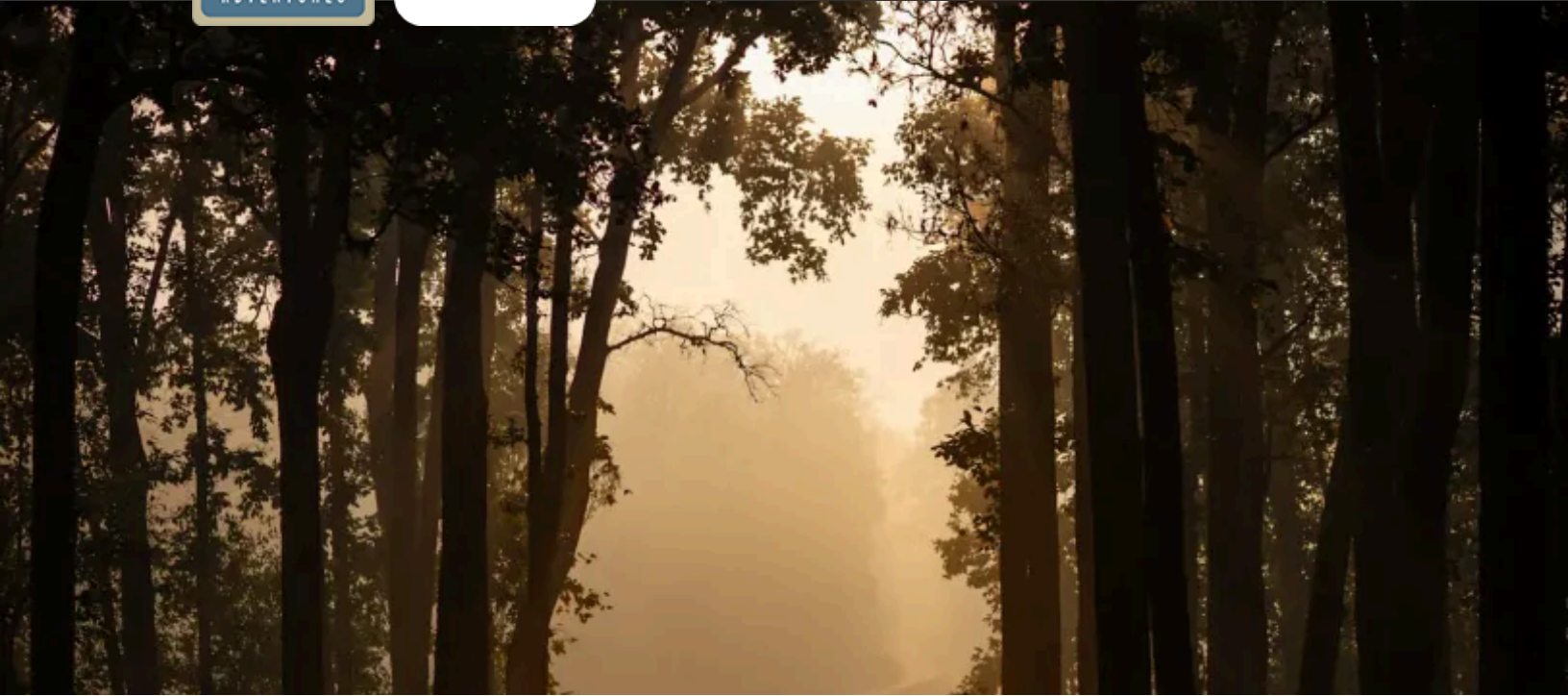
If you plan to arrive on Day 1, please arrive by 9 am in order to participate in a guided city tour beginning at approximately 1 pm.

**You may depart Delhi any time after 9 pm on the final day.**

Our Natural Habitat Adventures Travel Desk can best assist with your travel reservations, as our staff is familiar with the specific requirements of this program and can help arrange the most efficient itinerary. Please call us at 800-543-8917. While we offer the best available rates to us on airfare and additional nights' accommodations, you may occasionally find special web rates or lower fares online.



Discovering Our Planet Together



## Extension Details:

Agra & the Taj Mahal  
\$2395

# Grand India Photo Expedition Extensions

An Epic Photography Quest in Search of Bengal Tigers & Other Rare Wildlife



### Agra & the Taj Mahal

Extend your India wildlife adventure with this cultural journey to the fabled Taj Mahal and Agra Red Fort, elaborate monuments to the splendors of the Mughal imperial age.

\$2395



**Natural Habitat & WWF: Discovering Our Planet Together**

Natural Habitat Adventures • PO Box 3065 • Boulder, CO USA 80307

USA & Canada: 800-543-8917 • International: 303-449-3711

© 2026 Natural Habitat Adventures

WWF's membership travel program is operated by Natural Habitat Adventures (Nat Hab). To date, Nat Hab has provided more than \$6 million in support of WWF's mission and will continue to give 1% of gross sales plus \$175,000 annually through 2028. WWF® and ©1986 Panda Symbol are owned by WWF. All rights reserved.