



Discovering Our Planet Together



# Discover Newfoundland & Labrador

*Explore a Slice of Far-East Canada Where Wildlife & Raw Landscapes Reign*



Discovering Our Planet Together

## Table of Contents:

---

<b>Trip Overview .....</b>	<b>3</b>
<b>Trip Itinerary .....</b>	<b>4</b>
<b>Trip Accommodations .....</b>	<b>11</b>
<b>What Makes Nat Hab Different? .....</b>	<b>13</b>
<b>Dates &amp; Pricing Information .....</b>	<b>15</b>



Discovering Our Planet Together



## Trip Details:

### Days

12 Days /  
Jun-Aug

### Price

From  
\$14695  
(+Air)

## Discover Newfoundland & Labrador

### Explore a Slice of Far-East Canada Where Wildlife & Raw Landscapes Reign

Canada's most easterly province of Newfoundland and Labrador is indeed a realm of new-found discovery for nature travelers. Its rugged northern landscapes, profuse wildlife, rich history and cultural heritage combine to create a wealth of surprises for adventurers seeking a nature encounter beyond more well-trodden destinations. Here, the world's largest summer population of humpback whales plies the waters off the Avalon Peninsula, and 35 million seabirds, including huge colonies of Atlantic puffins, nest on the cliffs of myriad islands. Traditional fishing villages dot the coastline and a glacier-scoured landscape showcases rocks from the earth's mantle and oceanic crust. From the 400-year-old capital of St. John's, steeped in maritime heritage, to far-flung bays filled with marine life, Newfoundland and Labrador offers new realms for exploration.

## Trip Highlights

**View a diversity of whale species, see breeding colonies of Atlantic puffins and other prolific seabirds, and look for caribou and Arctic fox.**

**Explore the planet's geological evolution atop its exposed mantle in this World Heritage Site where the theory of plate tectonics was confirmed**

**Visit the historic fishing village of Battle Harbour, once a vibrant economic and cultural hub, now transformed into a living museum on remote Battle Island**



Discovering Our Planet Together



## Itinerary At A Glance

### Day 1

St. John's, Newfoundland

### Day 2

Witless Bay—Private Whale Watching & Puffin Cruise / Petty Harbour-Maddox Cove / Cape Spear

### Day 3

St. John's / Trinity / Private Marine Safari

### Day 4

Bonavista Peninsula—Puffin Viewing / UNESCO Global Geopark / Cape Bonavista Lighthouse / Dinner Theater

### Day 5

Private Whale-Watching Cruise / Trinity Historic Walking Tour / Skerwink Trail / Seafood Boil on the Beach

### Day 6

Private Flight & Transfer to Labrador / Battle Harbour National Historic Site

## Discover Newfoundland & Labrador Itinerary

Explore a Slice of Far-East Canada Where Wildlife & Raw Landscapes Reign

### Day 1: St. John's, Newfoundland

Arrive at St. John's International Airport where you're met and transferred to our downtown hotel. Situated on the eastern tip of the Avalon Peninsula on the island of Newfoundland in Atlantic Canada, St. John's is North America's easternmost city and one of the continent's oldest municipalities. Its rich cultural heritage blends Indigenous, English and Irish influences, some of which are on view in the downtown Quidi Vidi Trail, a series of interpretive panels and artwork. If time permits, explore on your own before gathering this evening for a welcome dinner and orientation with our Expedition Leader.





Discovering Our Planet Together

**Days 7 & 8**

Exploring Battle Harbour—Guided  
Walks / Private Boat Tour



### Itinerary At A Glance

#### Day 9

Mary's Harbour / Red Bay / Point Amour / Ferry to Newfoundland

#### Day 10

Port au Choix—Caribou Viewing / Gros Morne National Park—Private Western Brook Pond Cruise

#### Day 11

Gros Morne National Park—Tablelands / Bonne Bay

#### Day 12

Deer Lake / Depart

### Day 2: Witless Bay—Private Whale Watching & Puffin Cruise / Petty Harbour-Maddox Cove / Cape Spear

Our adventure begins with a boat cruise around Witless Bay, where nutrient-rich waters attract large numbers of migrating humpback whales each summer that feed, breach and slap the water in exciting displays of activity. Keep an eye out for minke whales, too, plus blue and sperm whales, though such sightings are less common. Seabirds are also a highlight. The Witless Bay Ecological Reserve comprises four islands that are home to North America's largest Atlantic puffin colony, with half a million puffins returning each spring and summer to nest. It is also a significant breeding site for about 50% of the Newfoundland and Labrador population of black-legged kittiwakes, and home to the world's second-largest storm petrel colony, with more than 620,000 nesting pairs. Among the hundreds of thousands of seabirds nesting in Witless Bay, we also find murres, herring gulls, razorbills and black guillemots.

Continue to Petty Harbour-Maddox Cove, one of the oldest European settlements in North America. Continuously occupied since at least 1598, the town's current population of about 950 sustains itself with fishing and ecotourism. There's ample time to explore the maritime village on foot before a traditional Newfoundland seafood dinner and catching the sunset at the historic Cape Spear Lighthouse.

### Day 3: St. John's / Trinity / Private Marine Safari

A scenic three-hour drive takes us from St. John's to Trinity, the coastal village where *The Shipping News* was filmed, and our destination for the next three nights. After lunch, head to sea in search of Newfoundland's abundant whales on a two-hour private marine safari aboard an RHIB—a Rigid Hull Inflatable Boat, offering agility that bigger vessels lack. The largest annual whale migration in the northern hemisphere begins off the Newfoundland coast in early June, with various species present until September or later. With our boat's low profile, we hope to get close enough to observe whales as they breach, feed and play. Following the coastline of Trinity Bay, passing scattered islands and remote communities, scout for humpback, fin, sperm and minke whales, orcas, dolphins and porpoises, seals, basking sharks, eagles, and seabirds, including puffins, gannets and more. Return to Trinity to enjoy some free time this afternoon before dinner in town.



## Discovering Our Planet Together

### **Day 4: Bonavista Peninsula—Puffin Viewing / UNESCO Global Geopark / Cape Bonavista Lighthouse / Dinner Theater**

Today's focus is the dramatic coast of the Bonavista Peninsula, which is home to hundreds of nesting pairs of Atlantic puffins. From Elliston, we take a short walk to the colony that roosts on a rocky outcrop, offering a close vantage for the best land-based puffin viewing in North America. Exploring the geology and natural history of the area, we witness the power of the ocean to relentlessly erode and reshape the soft sedimentary rock shoreline. This phenomenon is vividly demonstrated by a dramatic feature at Discovery UNESCO Global Geopark called The Dungeon. A large sinkhole formed by the collapse of two adjacent sea caves, The Dungeon will one day erode to become a single pillar known as a sea stack. We also visit Cape Bonavista Lighthouse, one of the most photographed in Newfoundland. Built in 1843 and painted in the classic red-and-white style of the region, the lighthouse contains a rare 19th-century catoptric lamp system that once burned seal oil to produce light.

Return to Trinity for a fun evening at Rising Tide Dinner Theater, a renowned drama company in operation since 1978. Producing plays that celebrate the province's storied past and contemporary voices, the company's performances are equally entertaining and educational. When weather permits, many performances take place outdoors.

### **Day 5: Private Whale-Watching Cruise / Trinity Historic Walking Tour / Skerwink Trail / Seafood Boil on the Beach**

Return to the sea this morning to look for more marine life on a private half-day whale-watching cruise. After lunch, enjoy a guided walking tour of historic Trinity. Trinity's rich heritage dates back more than 500 years, and we learn about the history of its many inhabitants over the centuries, including the Beothuk Indigenous people, and French, Irish and English settlers. Experience Trinity's magnificent cultural history through stories, photos, burial records, shipwrecks and disasters as we time-travel through Newfoundland with our acclaimed local guide, a Trinity native whose ancestors arrived in the "New Founde Land" from Dorset, England in the early 1800s. Later this afternoon, choose between free time in town or a hike on the Skerwink Trail led by our Expedition Leader. The route offers striking views of the rugged coastline, sea stacks, arches and beaches. Scan the deep blue ocean for humpback and minke whales, and watch seals bask on the rocks at the base of cliffs. Seabirds abound, and we frequently see bald eagles soaring overhead. This evening, depart for Fort Point where we gather for a classic Newfoundland summer dinner: a seafood boil by the ocean.



## Discovering Our Planet Together

### **Day 6: Private Flight & Transfer to Labrador / Battle Harbour National Historic Site**

From Gander, a small town that gained international recognition after the 9/11 attacks when it welcomed stranded passengers whose planes were diverted due to the closure of American air space, we board a private flight to Blanc Sablon, a village on the north coast of the Gulf of St. Lawrence. Here, we transfer to a small bus and drive along the Labrador coast to Mary's Harbour where we board a ferry for a scenic ride through the waters of the Labrador coast. Weaving through narrow channels and passing various islands, our route takes us through calm inlets where seals, whales and other marine life congregate.

As we approach Battle Island, brightly painted cottages come into view, scattered along the hill overlooking the historic settlement. Ashore, step back in time as we explore this restored former fishing outpost. Despite its isolation and exposure to the harsh elements, Battle Harbour was once known as the "Capital of Labrador." For centuries, it served as an economic and cultural stronghold for the region's sparsely populated southeast coast, sustaining a thriving fishing community until the 1990s when the cod fishery drastically declined and the permanent settlement was abandoned. Restored by the Battle Harbour Historical Trust, Battle Harbour today is a car-free island without cell service or reliable Wi-Fi, offering overnight visitors a quiet and immersive experience.

A tour of the settlement brings Battle Harbour's past to life. From the shoreline, scan the horizon for whales or look for Arctic fox as you traverse the small island on one of the many hiking trails that wend among Arctic vegetation and quirky rock formations. A sanctuary from modern distractions, Battle Harbour provides time and space to truly appreciate this grand landscape that has captivated people for centuries.

### **Days 7 & 8: Exploring Battle Harbour—Guided Walks / Private Boat Tour**

Over the course of two days, delve into Battle Harbour's origins as a fishery in the early 1770s, where fishermen would salt and preserve their catches. Witness its evolution into a thriving 19th-century fishing community and its modern incarnation as a living museum. Through interactive experiences and guided tours, gain insight into the resilience and determination that allowed this isolated community to thrive in the face of harsh conditions as it relied on the bounty of the sea. Battle Harbour's well-preserved buildings, including its red-and-white striped lighthouse, salt fish and merchant's premises, offer a tangible link to the island's heritage.

On a popular short hike, wander through once-thriving communities, now abandoned, which offer a glimpse into the past. Stroll to Cape St. Charles, the easternmost point in North America, for views that have remained virtually unchanged for centuries. Explore Battle Harbour's maritime heritage on a private boat tour along the island's shoreline, or participate in a hands-on baking experience, learning to create sweet buns that have been an island staple for generations.



## Discovering Our Planet Together

### **Day 9: Mary's Harbour / Red Bay / Point Amour / Ferry to Newfoundland**

An early morning ferry ride returns us to Mary's Harbour, looking for whales along the way. Ashore, we turn south to follow the Labrador coastline, passing Red Bay National Historic Site. With UNESCO World Heritage status, Red Bay encompasses the remains of a major 16th-century Basque whaling operation, attracting nearly 2,000 Basque whalers from Spain and France. They hunted bowhead and right whales, both currently endangered species, for their oil, used primarily as fuel for lighting in Europe at the time. Today, the archaeological remains include shipwrecks, rendering ovens, cooperages, and a cemetery containing the remains of 140 whalers. L'Anse Amour, our next stop, is the oldest known burial mound in North America. Located in one of the largest and longest-used Aboriginal habitation sites in Labrador, occupied by the Maritime Archaic people between 9,000 and 2,000 years ago, the low circular mound of large stones measures about 25 feet in diameter. We also see Atlantic Canada's tallest lighthouse at Point Amour, rising 109 feet above the Strait of Belle Isle. Then it's time to return to Newfoundland as we board another ferry this evening, watching for more marine life as we cross the strait.

### **Day 10: Port au Choix—Caribou Viewing / Gros Morne National Park—Private Western Brook Pond Cruise**

The fishing village of Port au Choix is home to a small resident caribou herd accustomed to human presence, which we go in search of this morning. While sightings are never guaranteed, we often have a chance for close observation and photo opportunities. Continue to Gros Morne National Park, acclaimed for its dramatic geology that provides a rare visible illustration of plate tectonics and the process of continental drift. A UNESCO World Heritage Site, the park contains exposed rocks from the earth's mantle and oceanic crust, which were thrust to the surface of the earth through a process called subduction around 500 million years ago. The geology also showcases events that occurred around 1.2 billion years ago when the ancient continental margin of North America collided with another continent and formed a vast mountain range. Explore this fascinating phenomenon this afternoon on a private boat ride on Western Brook Pond. Steep rock walls rising 2,000 feet high surround this spectacular fjord created by receding glaciers. Fed by Stag Brook and refreshed with numerous waterfalls, the pond formed when land rebounded following the melting of the glacier, creating a natural dam. Continuing to Bonne Bay, we transfer to Gros Morne Inn for two nights. The remainder of the afternoon is free to enjoy the cedar sauna or hot tubs, or relax on the patio by the fire pit before dinner.



## Discovering Our Planet Together

### **Day 11: Gros Morne National Park—Tablelands / Bonne Bay**

Today we get a rare glimpse into an intriguing slice of the planet's geology at Tablelands, a glaciated landscape comprised of exposed mantle rock typically found deep within Earth's interior. Orange-brown in color, the rock, called peridotite, creates a barren landscape that stands in stark contrast to the surrounding verdant hills and valley. The terrain is devoid of vegetation due to a heavy concentration of metals that are toxic to most—but not all—plants. Perhaps not surprisingly, given the otherworldly atmosphere of the landscape, several carnivorous plants thrive here, and we view the most prolific, which survive mainly on insects. After lunch, visit local artist studios in Bonne Bay, or simply enjoy the serene setting of the Gros Morne Inn. Gather this evening for a festive farewell dinner, reveling in our shared discovery of this lesser-known side of Canada.

### **Day 12: Deer Lake / Depart**

Transfer to Deer Lake Regional Airport for departing flights home.



Discovering Our Planet Together



### Accommodation Details:

Rosewood Suites at Trinity

Battle Harbour Merchant Building

Torrent River Inn

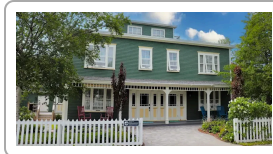
Gros Morne Inn

Alt Hotel St. John's

For detailed descriptions, visit [nathab.com/alaska-northern-adventures/explore-newfoundland-labrador/accommodations](http://nathab.com/alaska-northern-adventures/explore-newfoundland-labrador/accommodations)

## Discover Newfoundland & Labrador Accommodations

Explore a Slice of Far-East Canada Where Wildlife & Raw Landscapes Reign



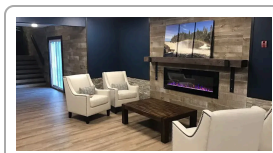
### Rosewood Suites at Trinity

In a restored heritage building in the heart of downtown Trinity, this boutique hotel embodies early 20th-century charm with traditional furnishings, polished hardwood and a welcoming front porch.



### Battle Harbour Merchant Building

This restored 200-year-old building overlooking the water, now an inn replete with historic decor, once served as the hub of mercantile operations for Battle Island's commercial fishing operation.

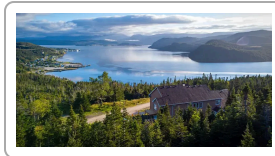


### Torrent River Inn

A recently renovated riverside lodge located near some of northern Newfoundland's most famous wild destinations, the inn offers immediate access to the Torrent River and surrounding nature.



## Discovering Our Planet Together



### Gros Morne Inn

This sustainability-focused boutique ecolodge, new in 2022, showcases views of ocean and mountain through large picture windows, while a cedar sauna and hot tubs offers relaxation after adventuring.



### Alt Hotel St. John's

This bright and modern hotel located on St. John's Harbor is a short drive to the airport, with trendy design features and rooms with floor-to-ceiling windows, down duvets and Egyptian cotton linens.



## A More Intimate Encounter with Newfoundland & Labrador

Complementing Newfoundland and Labrador's pristine nature is a rich tapestry of history and culture. Nat Hab gets you closest, in greater depth, to the province's wild, lesser-known natural features while also introducing you to its intriguing human heritage and hardy, hospitable people. Here are the features that make our trip so distinctive:

### **1 No One Shows You More of Newfoundland & Labrador**

Look closely at other itineraries: We doubt anyone else gives you a more comprehensive, unhurried encounter with this little-visited province. You'll explore coastline and interior alike, with three days in Labrador alone—a rare inclusion on most other trips.

### **2 Save Time with Our Private Chartered Flight Between Newfoundland & Labrador**

Our private flight between Gander, Newfoundland, and Blanc Sablon, Quebec, en route to Battle Harbour, Labrador, saves hours of driving, setting you up to explore much more of the region.

### **3 Skip the Crowds on a Private Boat Tour of Western Brook Pond**

Most visitors experience this stunning freshwater fjord aboard a packed 75-passenger boat. We charter that same boat exclusively for our small group of 14 guests—you'll have a peaceful experience, and everyone gets a superlative view at the rail.

### **4 Spend Three Nights on a Remote Labrador Island**

Once the commercial fishing capital of the region, historic Battle Harbour today is a restored community on Battle Island, nine miles off the coast of Labrador. From this secluded base, look for icebergs, whales, and Arctic fox as we learn about the rewards and challenges facing Labrador's hardy mariners. No other trip we know of offers this in-depth immersion in this special place.

### **5 A Small Group Ensures Intimate Nature Encounters**

Unlike typical tours, our adventure is limited to just 14 guests. Our small group size allows exclusive access to secluded hikes and walks, privately chartered small boats, watching wildlife without disturbing it, and true serenity in nature. With our high guide-to-guest ratio—you'll travel with an Expedition Leader and a local guide—we can tailor daily activities to travelers' personal interests and physical ability levels, impossible to do in a larger group.



## Discovering Our Planet Together

### **6 Intimate, Distinctive Accommodations Reflect Local Character**

Our small group size allows us to choose authentic inns noted for their history and atmosphere, and boutique ecolodges close to nature—a real contrast to larger, impersonal chain hotels.

### **7 The World's Finest Naturalist Guides**

Natural Habitat Adventures has a well-deserved global reputation for employing the highest-quality guides in the industry. Our Expedition Leaders have years of experience and training, including resources from WWF's top scientists. You won't find more knowledgeable—or more personable—guides than those who work with us. Our philosophy is simple: a nature adventure is only as good as the guide who leads it, so we provide the very best! **See Expedition Leader bios** with traveler comments regarding the quality of our leaders.

### **8 Our Quality-Value Guarantee Ensures Your Outstanding Experience**

With Natural Habitat Adventures, you receive our exclusive guarantee that clearly states that we will meet the high expectations we set forth in our promotional materials. To our knowledge, this is the most ambitious guarantee made by any adventure travel company.

### **9 Feel Good About Your Carbon-Neutral Journey**

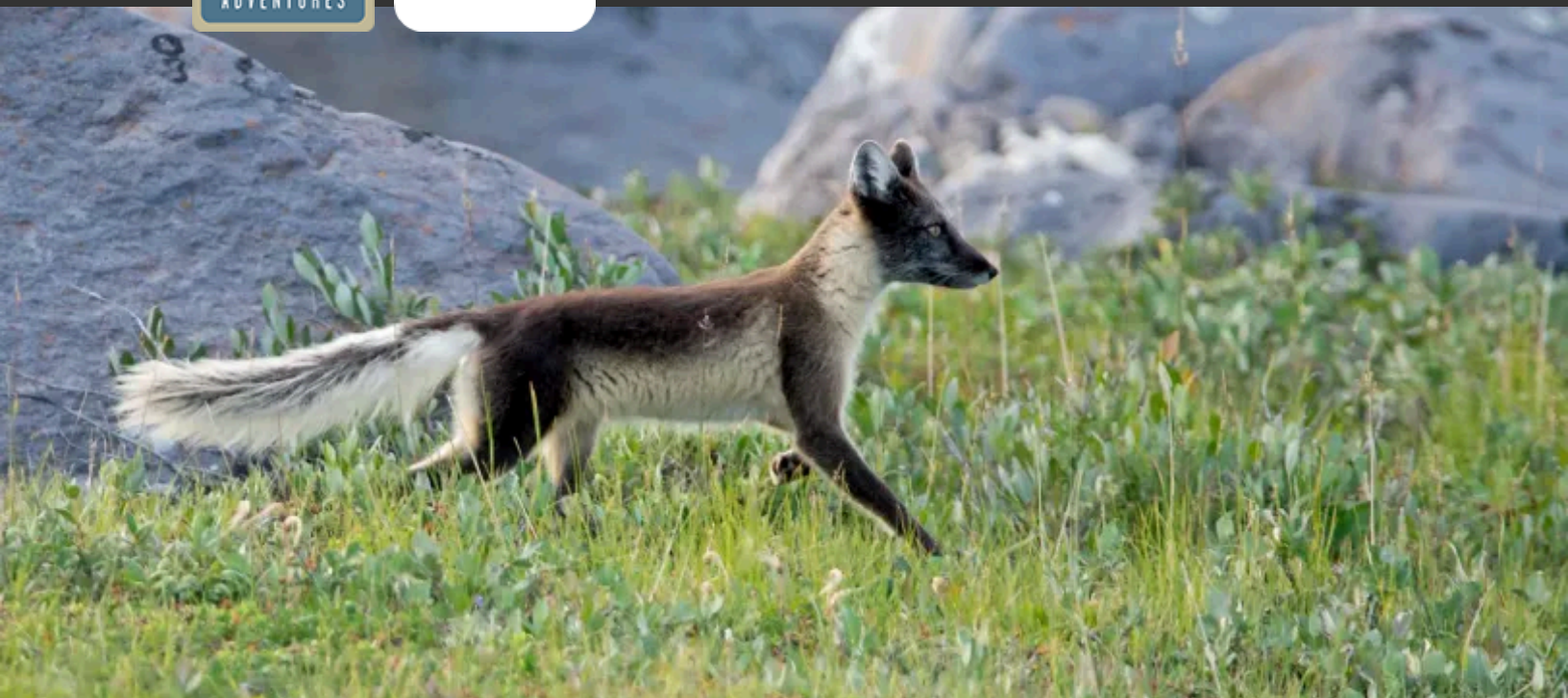
We care deeply about our planet, as we know you do. When you travel with us, the carbon emissions from your trip are 100% offset—including your round-trip flights from home. Natural Habitat Adventures has been the world's first carbon-neutral travel company since 2007.

### **10 Natural Habitat Adventures is WWF's Travel Partner**

Because of our commitment to environmentally friendly travel, as well as the exceptional quality of our small-group nature adventures, World Wildlife Fund, the world's leading environmental conservation organization, has named Natural Habitat Adventures its worldwide travel partner—a designation that makes us exceedingly proud!



Discovering Our Planet Together



## Dates & Pricing Summary:

**Prices:**  
From \$14695  
(+Air)

**Group Size:**  
Limited to 14  
Travelers

## Discover Newfoundland & Labrador Dates, Pricing & Info

Explore a Slice of Far-East Canada Where Wildlife & Raw Landscapes Reign

### 2026 Departures

Departure	Return	Notes
Jun 14, 2026	Jun 25, 2026	\$14995 USD (+internal air)
Jun 21, 2026	Jul 2, 2026	\$14995 USD (+internal air)
Jul 12, 2026	Jul 23, 2026	\$14995 USD (+internal air)
Jul 19, 2026	Jul 30, 2026	\$14695 USD (+internal air)
Jul 26, 2026	Aug 6, 2026	\$14995 USD (+internal air)



Discovering Our Planet Together

## Dates & Pricing Summary:

**Prices:**  
From \$14695  
(+Air)

**Group Size:**  
Limited to 14  
Travelers

Departure	Return	Notes
Aug 2, 2026	Aug 13, 2026	\$14995 USD (+internal air)
Aug 9, 2026	Aug 20, 2026	\$14995 USD (+internal air) <a href="#">Habitat Club Pricing Available</a>
Aug 16, 2026	Aug 27, 2026	\$14695 USD (+internal air)

## 2027 Departures

Departure	Return	Notes
! Prices and dates not confirmed for 2027		
Jun 20, 2027	Jul 1, 2027	\$14695 USD (+internal air)
Jun 27, 2027	Jul 8, 2027	\$14695 USD (+internal air)
Jul 4, 2027	Jul 15, 2027	\$14695 USD (+internal air)
Jul 11, 2027	Jul 22, 2027	\$14695 USD (+internal air)
Jul 18, 2027	Jul 29, 2027	\$14695 USD (+internal air)
Jul 25, 2027	Aug 5, 2027	\$14695 USD (+internal air)
Aug 1, 2027	Aug 12, 2027	\$14695 USD (+internal air)
Aug 9, 2027	Aug 20, 2027	\$14695 USD (+internal air)
Aug 16, 2027	Aug 27, 2027	\$14695 USD (+internal air)



## Discovering Our Planet Together

### Pricing

See <https://nathab.com/alaska-northern-adventures/explore-newfoundland-labrador/dates-fees> for the latest pricing details.

### Included

- **Trip price includes:** Accommodations, services of Nat Hab's professional Expedition Leader, local guides, whale watching and puffin viewing excursions, private boat tour of Western Brook Pond, evening wildlife and cultural presentations, all meals from dinner on Day 1 through breakfast on final day, some gratuities, all ferry transfers, airport transfers on Day 1 and final day, all activities and entrance fees, all taxes, permits and service fees.
- **Internal air cost includes:** Private charter flight from Gander to Blanc Sablon (this will be listed separately on our invoicing).

### Not Included

Travel to and from the start and end point of your trip, most alcoholic beverages, gratuities for your Expedition Leader, passport and visa fees (if any), optional activities, items of a personal nature (phone calls, laundry and internet, etc.), international airline baggage fees, airport and departure taxes (if any), required medical evacuation insurance, optional travel protection insurance.

### Important Information About This Trip

Our journey to Newfoundland and Labrador offers an exclusive opportunity to encounter eastern Canada's rugged landscapes as few travelers do. We immerse ourselves in this landscape and explore more of it than any competitor. As we delve into the remote lands and coastlines, guests must be prepared for adventure, solitude and culinary elements.

#### *Meals*

Newfoundland and Labrador are renowned for abundant and high-quality seafood sourced from the cold, pristine North Atlantic. Guests with allergies or strong aversion to seafood must be aware that many of the meals on this trip showcase local seafood. Dietary requirements due to serious medical conditions or strict personal restrictions can be met, with ample notice.

#### *Transportation*

Where possible, we have scheduled flights between destinations to minimize long drives. However, some of our remote stops are accessible only by roads, and travelers should be prepared for several long drives over the course of the trip.



## Mandatory Insurance

Since the areas we travel to are remote and wild (that's why we go there!), we require that all guests have, at minimum, medical evacuation insurance for this program. This is for the safety of all guests. We require that your chosen independent insurance plan includes at least \$250,000 in medical evacuation coverage.

To protect your investment and to provide peace of mind while you travel, we also strongly recommend purchasing comprehensive travel insurance. Plans may cover everything from medical treatment to trip cancellations and delays and lost luggage. Please contact our office if you would like more information about the medical evacuation and comprehensive travel insurance policies we offer by calling 800-543-8917.

## Getting There & Getting Home

This trip begins in St. John's, Newfoundland and ends in Deer Lake, Newfoundland. **You must arrive in St. John's by 4 pm on Day 1** in order to join your group orientation at 6 pm. For guests who come in early, recommended hotels will be included in your pre-departure materials.

**You may depart Deer Lake at any time on the final day.** Please note that the transfer from the group hotel in Gros Morne to Deer Lake Regional Airport takes about one hour, so early-morning departing flights will require a very early wake-up.

Our Natural Habitat Adventures Travel Desk can best assist with your travel reservations, as our staff is familiar with the specific requirements of this program and can help arrange the most efficient itinerary. Please call us at 800-543-8917. While we offer the best available rates to us on airfare and additional nights' accommodations, you may occasionally find special web rates or lower fares online.



**Natural Habitat & WWF: Discovering Our Planet Together**

Natural Habitat Adventures • PO Box 3065 • Boulder, CO USA 80307

USA & Canada: 800-543-8917 • International: 303-449-3711

© 2026 Natural Habitat Adventures

WWF's membership travel program is operated by Natural Habitat Adventures (Nat Hab). To date, Nat Hab has provided more than \$6 million in support of WWF's mission and will continue to give 1% of gross sales plus \$175,000 annually through 2028. WWF® and ©1986 Panda Symbol are owned by WWF. All rights reserved.