



Discovering Our Planet Together



East Greenland Photo Expedition

Capture Riveting Images of Glaciers, Icebergs, Marine Life & Inuit Culture in a Rarely Visited Region



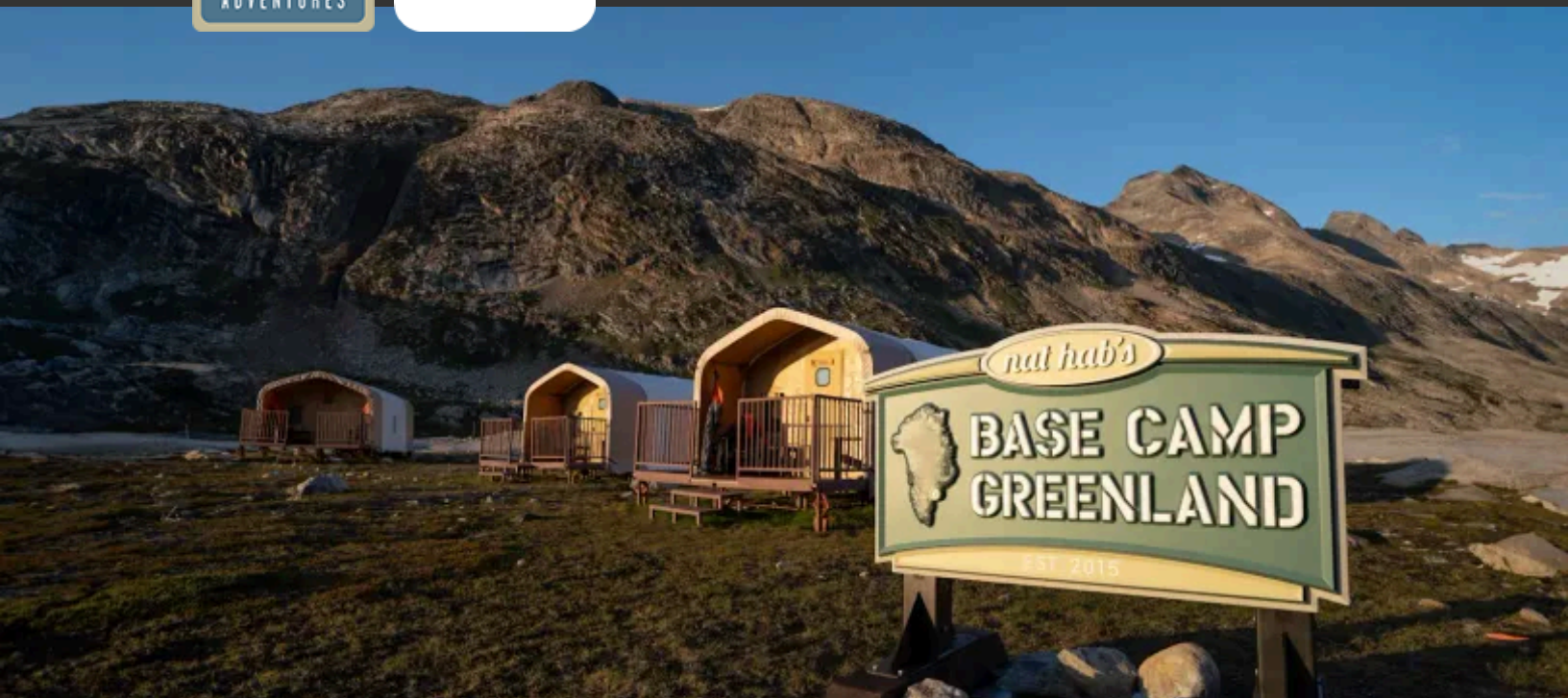
Discovering Our Planet Together

Table of Contents:

Trip Overview	3
Trip Itinerary	4
Trip Accommodations	9
What Makes Nat Hab Different?	11
Dates & Pricing Information	13
Trip Extensions	18



Discovering Our Planet Together



Trip Details:

Days

10 Days /
Aug

Price

From
\$14195
(+Air)

East Greenland Photo Expedition

Capture Riveting Images of Glaciers, Icebergs, Marine Life & Inuit Culture in a Rarely Visited Region

For photographers on a quest for the world's magnificent Arctic landscapes, Greenland delivers—on an epic scale! And in little-traveled East Greenland, where our adventure takes place, you'll find an icebound tableau few photographers on Earth have access to. Here near the edge of the Greenland ice sheet, glaciers spawn massive blue icebergs into Sermilik Fjord, which we cruise among on Zodiac outings, offering countless angles for mesmerizing images of their fantastical shapes. On kayak excursions in the bay, look for whales and seals as we paddle among the floating ice. Pointed peaks form a jagged backdrop, while tiny tundra wildflowers offer intimate subjects for macro photography on hikes ashore. Our deluxe private base camp in view of the Greenland ice sheet is an outpost of warmth and comfort in this wild Arctic wonderland. We also have opportunities to photograph cultural subjects on visits to Inuit villages, including Greenlandic sled dogs.

Trip Highlights

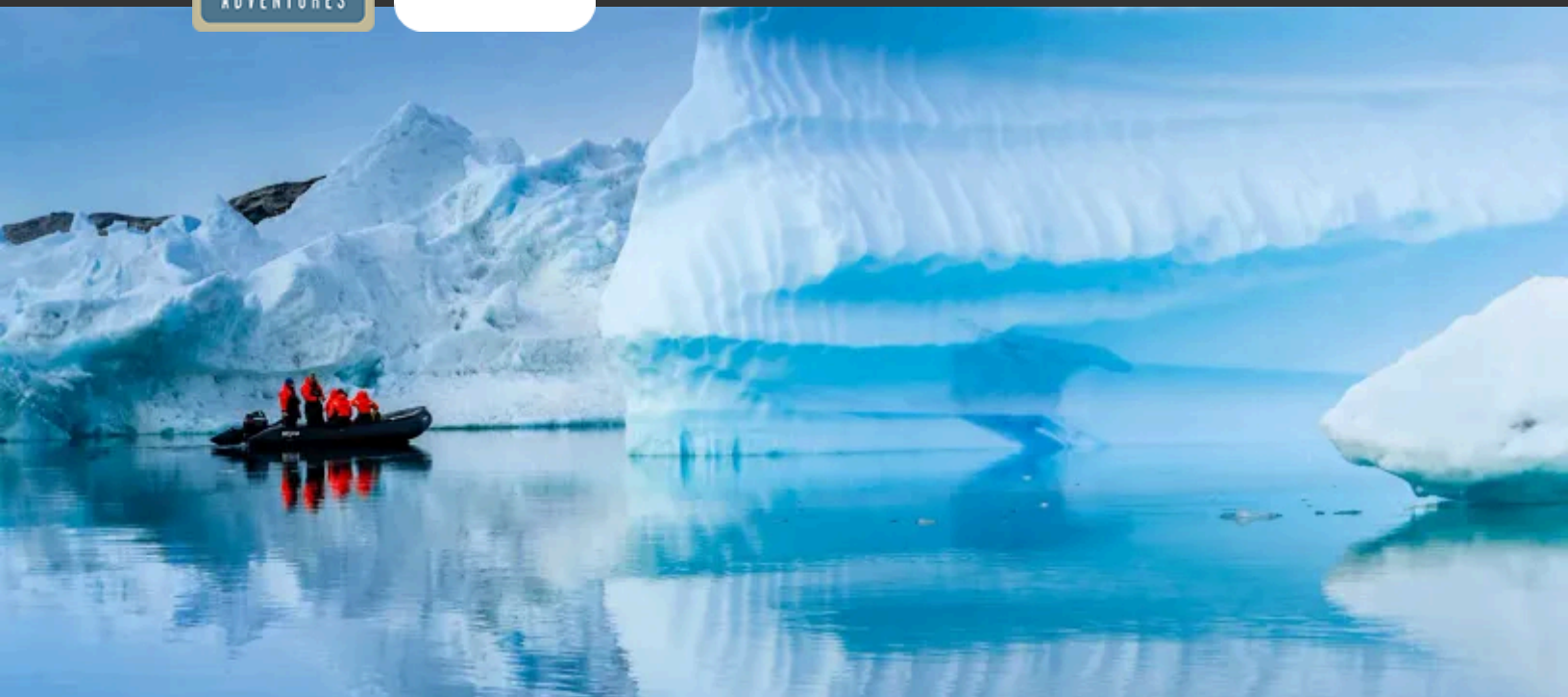
Most Greenland photography happens on the more populated west side, but our focus is on the virtually uninhabited east coast, where silence and solitude reign

Enjoy warm tent cabins, hot showers and chef-prepared fresh meals at our private safari-style camp on a tucked-away bay surrounded by monumental peaks

Explore fjords and islands by boat, helicopter, kayak and on foot—capture stunning shots of ice, look for whales and seals, and meet local Inuit residents



Discovering Our Planet Together



Itinerary At A Glance

Day 1

Keflavik, Iceland / Reykjavik

Day 2

Reykjanes Peninsula Photo Tour /
Kulusuk, Greenland / Tasiilaq

Day 3

Tasiilaq—Valley of Flowers &
Town Tour

Day 4

Tasiilaq / Journey to Nat Hab's
Base Camp Greenland

Days 5 - 7

Base Camp Greenland—Exploring
Sermilik Fjord by Zodiac, Foot &
Kayak

Day 8

Base Camp Greenland /
Helicopter or Boat to Kulusuk /
Drumming & Dancing
Performance

Day 9

Private Glacier Walk & Ice Cave
Photography / Kulusuk Town Tour
/ Fly to Keflavik

East Greenland Photo Expedition Itinerary

Capture Riveting Images of Glaciers, Icebergs, Marine Life & Inuit Culture in a Rarely Visited Region

Day 1: Keflavik, Iceland / Reykjavik

Arrive at Keflavik International Airport where you're met on arrival and transferred to our hotel in Reykjavik, the capital of Iceland, less than an hour's drive. If you arrive very early, you may store your bags at our conveniently located hotel while you explore this compact, photogenic city on your own. This evening, gather for a welcome dinner and presentation with our Expedition Leaders.





Discovering Our Planet Together

Itinerary At A Glance

Day 10
Keflavik / Depart

Day 2: Reykjanes Peninsula Photo Tour / Kulusuk, Greenland / Tasiilaq

Encounter the geological forces shaping Iceland as we head down the Reykjanes Peninsula to photograph a variety of fascinating features. The peninsula is one of Iceland's most active volcanic areas, with seven separate eruptions occurring in 2024 alone. Our Expedition Leader will determine our routing based on weather and local conditions, likely including Seltun, one of Iceland's most important high-temperature geothermal areas. Lying on the fissure zone of the Mid-Atlantic Ridge that separates the Eurasian and North American tectonic plates, this dynamic landscape is pocked with boiling mudpots and hissing fumaroles belching steam. As we follow the boardwalk through this animated landscape where mineral deposits create colorful sediments, the pungent odor of sulphur hangs in the air. We may also stop to photograph seabird cliffs, a picturesque lighthouse, and geothermal springs.

After our photo odyssey around the peninsula, return to Keflavik, Iceland's international airport where we board our late afternoon flight to Kulusuk, Greenland. As we approach, get a preview of the magnificent scenery to come, with icebergs drifting below and perhaps even a chance to spot a whale from the air, if you've got a window seat. From Kulusuk, make a scenic transfer by helicopter or boat to Ammassalik Island, landing in Tasiilaq, the small administrative center of East Greenland. Tasiilaq's collection of charming wooden houses painted in bright primary colors hugs King Oscar's Harbor, surrounded by pointed peaks iced with glaciers. The town of 2,000 is a hub for outdoor adventure, from hiking and kayaking in summer to dog sledding and glacier skiing in winter. Most of East Greenland is uninhabited, however, except for a handful of small subsistence hunting communities. Greenland's east coast is often called "the back side" by those on the west, where most of the population, its capital and institutions are located. East Greenland's people had no contact with the outside world till the beginning of the 20th century, and that isolation has fostered a distinct and resilient culture. Our introduction to Greenland begins here where Arctic wilderness and traditional lifestyles meet. Once we check in to our hotel, we gather for dinner, surveying the 180-degree view of the town below and mountains beyond.



Discovering Our Planet Together

Day 3: Tasiilaq—Valley of Flowers & Town Tour

Though interior Greenland is covered by a massive ice cap, a few habitable areas exist around the bays and coastal islands, and the region we visit enjoys a surprisingly mild and dry summer climate. Set out this morning with our Expedition Leader to explore the photogenic area around Tasiilaq on foot, hiking into the Valley of Flowers above the scenic bay in front of the town. Here, ice-clad gneiss and granite peaks provide a striking backdrop for waterfalls and small lakes fringed by Arctic wildflowers in season. We spend the afternoon exploring more of Tasiilaq and environs, capturing shots of the classic wooden houses in bright primary colors, boats bobbing in the harbor backdropped by imposing mountains across the bay, Greenlandic sled dogs tied up outside homes, and local people who still embrace many traditional elements of their ancient Inuit heritage that extends back more than 4,000 years in this region. Later this afternoon, we'll hear firsthand from a local resident who shares personal perspectives on daily life and subsistence in this remote Arctic realm.

Day 4: Tasiilaq / Journey to Nat Hab's Base Camp Greenland

Depart by boat for our exclusive wilderness Base Camp, located on the east side of Sermilik Fjord. Our destination is near the tiny hamlet of Tinit, which we'll visit during our stay. The village is one of the most picturesque outposts in East Greenland, offering the chance to shoot the panorama of Sermilik Fjord littered with huge icebergs. Behind the town, glacier-clad peaks rise over a mile high, jutting up like sharp black teeth through the ice. Tinit is home to fewer than a hundred hardy people who live a subsistence lifestyle, fishing and hunting amid constantly shifting ice.

Keep your camera close as we search for whales as we travel, as they are often seen in these waters when ice conditions permit. The area is filled with evidence of ancient habitation, including graves and ruins of old Inuit sod house foundations, and it is an evocative place to learn more about Inuit history and lore. Reaching Base Camp Greenland, we find ourselves in one of the most remote places on the planet. After settling in to our private tent cabins, sit down for coffee, tea and lunch in the yurt. We'll convene for an orientation to our environs, followed by a gear fitting to prepare for our Arctic adventures ahead. An afternoon exploration is likely to include a paddle among the small icebergs and calm waters of our protected bay if weather permits, then we'll gather for dinner and a lecture to acquaint us with the region's remarkable natural history. Through presentations and personal visits during our stay, we also learn about Greenland's cultural heritage and aspects of modern life. Traditional Inuit identity remains dominant in East Greenland, and we share an authentic encounter with this enduring culture that still exists in close harmony with nature.



Discovering Our Planet Together

Days 5 - 7: Base Camp Greenland—Exploring Sermilik Fjord by Zodiac, Foot & Kayak

The landscape along Greenland's isolated and rarely visited east coast is dramatic. Great fjords indent the coastline, penetrating far into sheer-sided mountains capped by the world's second-largest ice sheet—and Sermilik Fjord is the mightiest of them all. The 60-mile-long "iceberg highway" is primarily fed by the highly active Helheim Glacier, the fastest-flowing tidewater glacier on Greenland's east coast. Our base camp provides a safe and comfortable outpost from which to explore and photograph this vast expanse of wild terrain just below the Arctic Circle. Beyond our location at the mouth of a glacial valley, the wider region is dotted with a few isolated villages where Greenlandic Inuit people have thrived for centuries in this uncompromising Arctic environment. In varied encounters, we learn about their culture and how they are retaining their traditions while adapting to contemporary life in the 21st century.

On Zodiac excursions, navigate among a flotilla of blue icebergs in an array of wild shapes, some as big as buildings, as we seek out seals. Whales are also found seasonally in these waters, when ice conditions permit, and we'll look for fin, minke and humpback whales. Guided sea kayaking is also an option for getting eye-level photos on the frigid waters and bobbing ice. Ashore, we traverse the mountainsides and wander near glaciers that wind down from the Greenland ice sheet. This huge ice mass—second in size only to Antarctica—stretches more than 1,500 miles from north to south, is nearly 2 miles deep at its thickest point, and covers 80 percent of the island. Learn about the crucial role the ice sheet plays in regulating Earth's climate and see with your own eyes how rapidly it is being affected by a warming climate.

Long hours of summer daylight allow for extensive exploration. Witness the effect of geological forces on naked bedrock, and walk atop patches of tundra. Amid fields of Arctic cotton grass, look for Arctic fox and birdlife including ptarmigan, northern wheatear, and possibly gyrfalcon. Each evening, we retreat to Base Camp for creative meals prepared by our accomplished chef. After dinner, gather for interpretive presentations by our naturalist Expedition Leaders, who share their extensive knowledge of Greenland's geology, glaciology, ecology and human history, as well as their tips for how to best photograph this wild landscape and its inhabitants. And, though the sun gleams late into the evening just below the Arctic Circle, a good night's sleep is in order to refuel for the next day's adventures. Wrapped in profound silence in our isolated cabins, we're sure to get it. On our late-season departures, we may even have a chance to photograph the northern lights, if the aurora is active in the darkening night sky.



Discovering Our Planet Together

Day 8: Base Camp Greenland / Helicopter or Boat to Kulusuk / Drumming & Dancing Performance

Today we make our way back to Kulusuk by helicopter or boat, depending on weather conditions and availability. Survey jagged peaks and huge U-shaped valleys gouged by glaciers as you practice your aerial photography skills, or take parting photos of icebergs and whales as we cruise the frigid water. On arrival in Kulusuk, check in to our hotel surrounded by more of East Greenland's imposing mountains—it's a well-known gathering point for adventurers and scientists heading out to the ice sheet. This afternoon, we'll take an exploratory coastal walk with sweeping views of icebergs and mountains. We then enjoy a private performance of traditional Greenlandic drumming and dancing—an opportunity for cultural photography and videography—before gathering for dinner.

Day 9: Private Glacier Walk & Ice Cave Photography / Kulusuk Town Tour / Fly to Keflavik

This morning, we board a boat to head out for a half-day glacier walk excursion with exciting photo opportunities. In addition to large chunks of ice calved from glaciers that feed the region's fjords, we may also see tabular icebergs—ocean-going slabs of ice, some of which have been drifting for months, driven down the coast by the strong East Greenland Current. Reaching a small island, we disembark to walk on a glacier, surrounded by spectacular views of fjords and mountain ranges. Atop its rough surface, examine unique formations including deep crevasses and moulins, which are whirlpool-like shafts in the ice. Walking farther, we reach a vantage point for a full view of the glacier's face, with an opportunity to photograph it in its entirety. Conditions permitting, we also explore the interior of an ice cave, capturing mesmerizing images of its surreal shapes and shades of blue.

Returning to Kulusuk, it's time to celebrate our extraordinary adventure over a farewell lunch at the hotel. In the afternoon, explore the town on a guided tour before flying back to Iceland's Keflavik International Airport, arriving late this evening. We spend the night at an airport hotel nearby to facilitate easy connections for tomorrow's onward departures.

Day 10: Keflavik / Depart

A transfer is included to Keflavik International Airport to meet departing flights. *Please Note: This itinerary is meant as a guideline and can change due to weather and ice conditions.*

Given the expeditionary nature of our trip, on some occasions, adverse conditions may require us to deviate from our intended itinerary, in which case we will provide the best available alternative. And we'll make a great adventure of it!



Discovering Our Planet Together



Accommodation Details:

Base Camp Greenland

Hotel Angmagssalik

Hotel Kulusuk

Hotel Reykjavik Saga

Park Inn by Radisson Reykjavik
Keflavik Airport

For detailed descriptions, visit
nathab.com/europe/east-greenland-nature-photo-expedition/accommodations

East Greenland Photo Expedition Accommodations

Capture Riveting Images of Glaciers, Icebergs, Marine Life & Inuit Culture in a Rarely Visited Region



Base Camp Greenland

A singular, exclusive refuge of rustic Arctic luxury surrounded by raw wilderness. Eight heated safari-style tent cabins offer exceptional comfort and amenities for these ultra-remote environs.



Hotel Angmagssalik

Perched high above the seaside village of Tasiilaq in remote East Greenland, 30 simple yet comfortable rooms offer guesthouse-style ambience with stunning views from a spacious contemporary lounge.

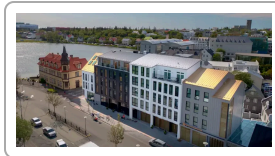


Hotel Kulusuk

The only lodging in this small and traditional Inuit community, Hotel Kulusuk enjoys a scenic perch on Greenland's rocky east coast, with views of Apusiaajik Glacier and Isikajia Mountain.



Discovering Our Planet Together



Hotel Reykjavik Saga

This elegant new 4-star hotel in the heart of Reykjavik features sleek contemporary design elements and is just steps from all the city center attractions.



Park Inn by Radisson Reykjavik Keflavik Airport

Located in Keflavik just ten minutes from the airport, the hotel provides a convenient landing spot for our final night, with easy access for departing flights.



Discover Why This Is the Ultimate Greenland Photography Expedition

Looking for the ultimate Arctic photo experience? This may well be it. Experience the rugged beauty of East Greenland in complete comfort, surrounded by some of the most remote wilderness on Earth. Previously this region was accessible only via hiking or kayaking while camping in tents. Our private Base Camp Greenland offers adventurous travelers an exceptional alternative—exclusively for Nat Hab guests. Find out why you'll get your best Greenland photos here!

1 Get Exclusive Images—We Go Where No One Else Does

Only Natural Habitat Adventures offers this unique itinerary into an exceedingly remote realm of vast fjords, huge icebergs and close-range views of the Greenland ice sheet. While other outfitters offer trips to Greenland, most go to the west coast, which is where the bulk of the population lives. Virtually no commercial trips visit the east coast, and no one has the experience and expertise we do in the Sermilik Fjord complex.

2 The Only "Luxury" Base Camp in Greenland

Constructed in 2015 and still without competitors, our Arctic expedition camp offers comforts you'd never expect in this remote sector of Greenland, including hot showers, heated tent cabins with en suite toilets, and chef-prepared fresh meals. From camp, we have access to close-up views of the Greenland ice sheet by Zodiac. Our location near the edge of Sermilik Fjord grants us an eye-level vantage on huge icebergs floating by, and we often see whales and seals in the frigid waters.

3 A Small-Group Wilderness Immersion

Our camp accommodates a maximum of 13 travelers. This small group size ensures an experience of solitude in the wilderness and personal attention from our Photo Expedition Leaders, by your side to offer tips and techniques to bring your photography to the next level. You'll also benefit from enlightening evening presentations presented by our guides, who expert photography instructors as well as highly knowledgeable Arctic naturalists.

4 An Authentic Encounter with Contemporary Greenlandic Culture

In addition to our time at Base Camp, we spend time in Kulusuk; Tasiilaq, the capital of East Greenland; and the tiny village of Tinit, a 20-minute boat ride from camp. Learn about East Greenland's history and culture on walks, personal visits and a tour of the town museum in Tasiilaq. Most visitors never get to these remote communities, but our overnight stays allow us to meet the local Greenlandic Inuit, appreciate their enduring culture and traditions, and gain insight into the challenges and rewards of life in modern Greenland.



Discovering Our Planet Together

5 Unmatched Depth of Greenland Guiding Experience

Our company has more East Greenland experience than any other outfitter. Nat Hab colleague Olaf Malver pioneered commercial kayaking trips on Greenland's east coast in the 1980s, including many historic exploratory paddling "firsts," and his deep expertise has placed us in an unparalleled position today. Our guides are not only seasoned Arctic outdoor guides, but highly accomplished photographers adept at sharing their expertise. We know a nature photo expedition is only as good as the guide at the helm, and we provide the very best! See Expedition Leader bios and traveler comments regarding the quality of our leaders.

6 The Absolute Best Equipment

As part of our unwavering commitment to safety and comfort, we use the best and most up-to-date expedition Zodiacs and kayaks available, as well as top-of-the-line safety gear. Our equipment is meticulously maintained, reducing the chance for unexpected mishaps. We also provide the highest-quality Mustang expedition suits for our guests' safety and warmth while on the water. When safety counts, only the best will do—and not every outfitter provides it.

7 Our Quality-Value Guarantee Ensures Your Outstanding Greenland Adventure

When you travel with Natural Habitat, you receive our exclusive guarantee, clearly stating that we will meet the lofty expectations we set in our promotional materials. To our knowledge, this is the most ambitious guarantee made by any adventure travel company. Read our important promise.

8 Feel Good About Your Carbon-Neutral Journey

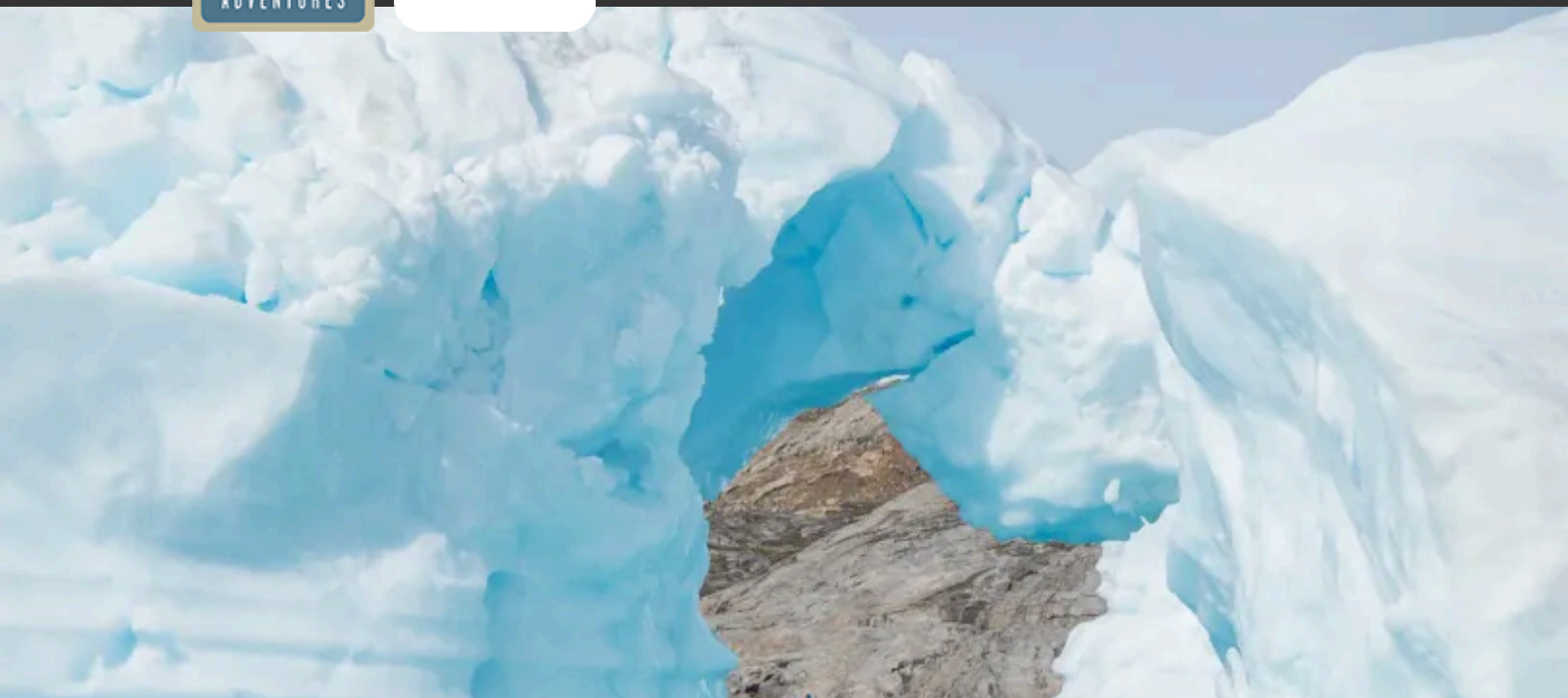
We care deeply about our planet, as we know you do. When you travel with us, the carbon emissions from your trip are 100% offset—including your round-trip flights from home. Natural Habitat Adventures has been the world's first carbon-neutral travel company since 2007.

9 Natural Habitat Adventures is WWF's Travel Partner

Because of our commitment to environmentally friendly travel, as well as the exceptional quality of our worldwide adventures, we have been chosen by World Wildlife Fund—the world's leading environmental conservation organization—as its worldwide travel partner, a designation that makes us exceedingly proud.



Discovering Our Planet Together



Dates & Pricing Summary:

Prices:
From \$14195
(+Air)

Group Size:
Limited to 13
Travelers

East Greenland Photo Expedition Dates, Pricing & Info

Capture Riveting Images of Glaciers, Icebergs, Marine Life & Inuit Culture in a Rarely Visited Region

2026 Departures

Departure	Return	Notes
Aug 23, 2026	Sep 1, 2026	\$14195 USD (+internal air)

2027 Departures

Departure	Return	Notes
Aug 24, 2027	Sep 2, 2027	\$15795 USD (+internal air)
Aug 29, 2027	Sep 7, 2027	\$15795 USD (+internal air)

2028 Departures



Discovering Our Planet Together

Departure	Return	Notes
! Prices and dates not confirmed for 2028		
Aug 24, 2028	Sep 2, 2028	\$15795 USD (+internal air)
Aug 29, 2028	Sep 7, 2028	\$15795 USD (+internal air)



Pricing

See <https://nathab.com/europe/east-greenland-nature-photo-expedition/dates-fees> for the latest pricing details.

Included

- **Trip price includes:** Accommodations, services of Nat Hab's professional Expedition Leaders, local guides and camp staff, all meals from dinner on Day 1 through breakfast on Day 10, select beer and wine at camp, some gratuities, airport transfers for those arriving by air on Day 1 and departing by air from Keflavik on final day, private lava tunnel tour, private glacier walking tour, gear including Mustang expedition suits for Zodiac excursions and all kayaking and glacier walking equipment, all activities and entrance fees, all taxes, permits and service fees.
- **Internal air includes:** Round-trip flights between Reykjavik, Iceland and Kulusuk, Greenland, transportation between Kulusuk and Tasiilaq, and transportation from camp to Kulusuk (this will be listed separately on our invoicing).

Not Included

Travel to and from the start and end point of your trip, some alcoholic beverages, some gratuities, passport and visa fees (if any), optional activities, items of a personal nature (phone calls, laundry and internet, etc.), airline baggage fees, airport and departure taxes (if any), required medical evacuation insurance, optional travel protection insurance.



Important Information About This Trip

Our journey to Base Camp Greenland offers the only opportunity to encounter one of the planet's most isolated locations via luxury camping. As we head way off the grid on Greenland's remote east coast, guests must be prepared for all the vagaries that come with travel to such an isolated destination. These include inclement weather, varying ice conditions, and a scarcity of operational support, all of which makes a journey to our exclusive Base Camp Greenland an adventure in the truest sense. At times, flights may be canceled due to poor weather, routes may be closed due to changing ice conditions, and some amenities may become unavailable until a new shipment arrives. But the adventure is part of the excitement, and we will use our 25+ years of Greenland operating experience to make the best of even substantial itinerary changes, should they occur.

Terrain

Terrain in Greenland is mostly off-trail and more difficult than the terrain you might be accustomed to hiking on. **Click here to see example photos of walks and hikes from our adventure.** We take your safety and risk management seriously. If it is determined by the Expedition Leader(s) that you are physically unfit for certain activities, you will be required to sit out or stay back at camp.

Medical Form

Due to the extremely remote nature of this adventure, all travelers are required to submit a medical form prior to departure. This form will be emailed to you approximately six months before your trip. It must be completed and signed by your primary care physician, confirming that you are medically cleared to participate based on the physical requirements outlined for this itinerary.

Meals

Please understand that the meals at camp, while hearty and tasty, are specially planned and prepared for well in advance. Dietary requirements due to serious medical conditions or strict personal restrictions can be met, with ample notice, but must be adhered to while on the trip. If you have a restricted diet (such as vegetarian, gluten-free, vegan, dairy-free, etc), we recommend bringing some of your preferred snacks along with the appreciation that certain foods are limited in this part of the world, and there might not be many options at the Greenland hotels.

Flight Delays

It is possible that your flight to Greenland or back to Iceland could be delayed or cancelled due to inclement weather. In these cases, we provide alternate activities and accommodations during the trip time frame.

Safety

Your safety is of paramount concern to us. Toward that end, we provide highly competent guides with extensive experience in polar regions, and the very best equipment. Our guides are thoroughly trained in emergency wilderness first-aid techniques, traveling in polar bear terrain, and with maritime survival in polar waters. Ultimately, our guides make decisions with everyone's comfort and safety in mind, while trying to maximize the adventure experience for each individual. We must stress that listening carefully to your guide's instructions and directions is ultimately your responsibility and in your best interest and that of the group.

Specialized Equipment

We provide all group gear such as Mustang survival suits, kayaks and kayaking gear (dry suits, pogies, booties, PFDs) dry bags and a comprehensive first-aid kit and satellite communication devices for emergency communications. We will supply you with a comprehensive Clothing & Equipment list prior to your departure.



Mandatory Insurance

Since the areas we travel to are remote and wild (that's why we go there!), we require that all guests have, at minimum, medical evacuation insurance for this program. This is for the safety of all guests. We require that your chosen independent insurance plan includes at least \$250,000 in medical evacuation coverage.

To protect your investment and to provide peace of mind while you travel, we also strongly recommend purchasing comprehensive travel insurance. Plans may cover everything from medical treatment to trip cancellations and delays and lost luggage. Please contact our office if you would like more information about the medical evacuation and comprehensive travel insurance policies we offer by calling 800-543-8917.

Getting There & Getting Home

This trip begins and ends in Reykjavik. **You must arrive at Keflavik International Airport no later than 3:30 pm on Day 1** in order to be ready for a 5:30 pm welcome dinner and briefing. Upon arrival, you will be met by a Nat Hab representative and transferred approximately one hour to your hotel. For guests who come in early, recommended hotels will be included in your pre-departure materials.

You may depart Reykjavik at any time on the final day, though afternoon flights are recommended.

Weather delays or other unforeseen events can occur, and it is sometimes necessary to spend an extra night in Kulusuk while waiting for improved conditions. Because this does happen a few times each year, we recommend **not scheduling any important, time-sensitive events immediately after your planned return home**. Please allow a buffer in case of flight delays.

Our Natural Habitat Adventures Travel Desk can best assist with your travel reservations, as our staff is familiar with the specific requirements of this program and can help arrange the most efficient itinerary. Please call us at 800-543-8917. While we offer the best available rates to us on airfare and additional nights accommodations, you may occasionally find special web rates or lower fares online.



Discovering Our Planet Together



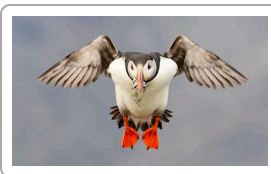
Extension Details:

Ultimate Iceland Photo Expedition
\$18395

Iceland: Circling the Land of Fire & Ice
\$16295

East Greenland Photo Expedition Extensions

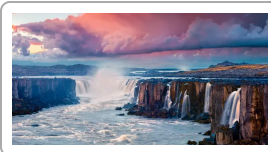
Capture Riveting Images of Glaciers, Icebergs, Marine Life & Inuit Culture in a Rarely Visited Region



Ultimate Iceland Photo Expedition

Go longer, farther and deeper into the most remote corners of Iceland in pursuit of stunning landscape shots and native wildlife—with private flightseeing and boat tours for every possible perspective.

\$18395 (+air)



Iceland: Circling the Land of Fire & Ice

An immersive journey into the rugged grandeur of a land sculpted by intense geological forces. Make a full loop around Iceland on the most comprehensive nature adventure this compact country has to offer.

\$16295 (+air)



Natural Habitat & WWF: Discovering Our Planet Together

Natural Habitat Adventures • PO Box 3065 • Boulder, CO USA 80307

USA & Canada: 800-543-8917 • International: 303-449-3711

© 2026 Natural Habitat Adventures

WWF's membership travel program is operated by Natural Habitat Adventures (Nat Hab). To date, Nat Hab has provided more than \$6 million in support of WWF's mission and will continue to give 1% of gross sales plus \$175,000 annually through 2028. WWF® and ©1986 Panda Symbol are owned by WWF. All rights reserved.