



Discovering Our Planet Together



Grand Canyon, Bryce & Zion

Iconic Vistas & Magical Light—Discover the Red Rock Wonders of the American Southwest



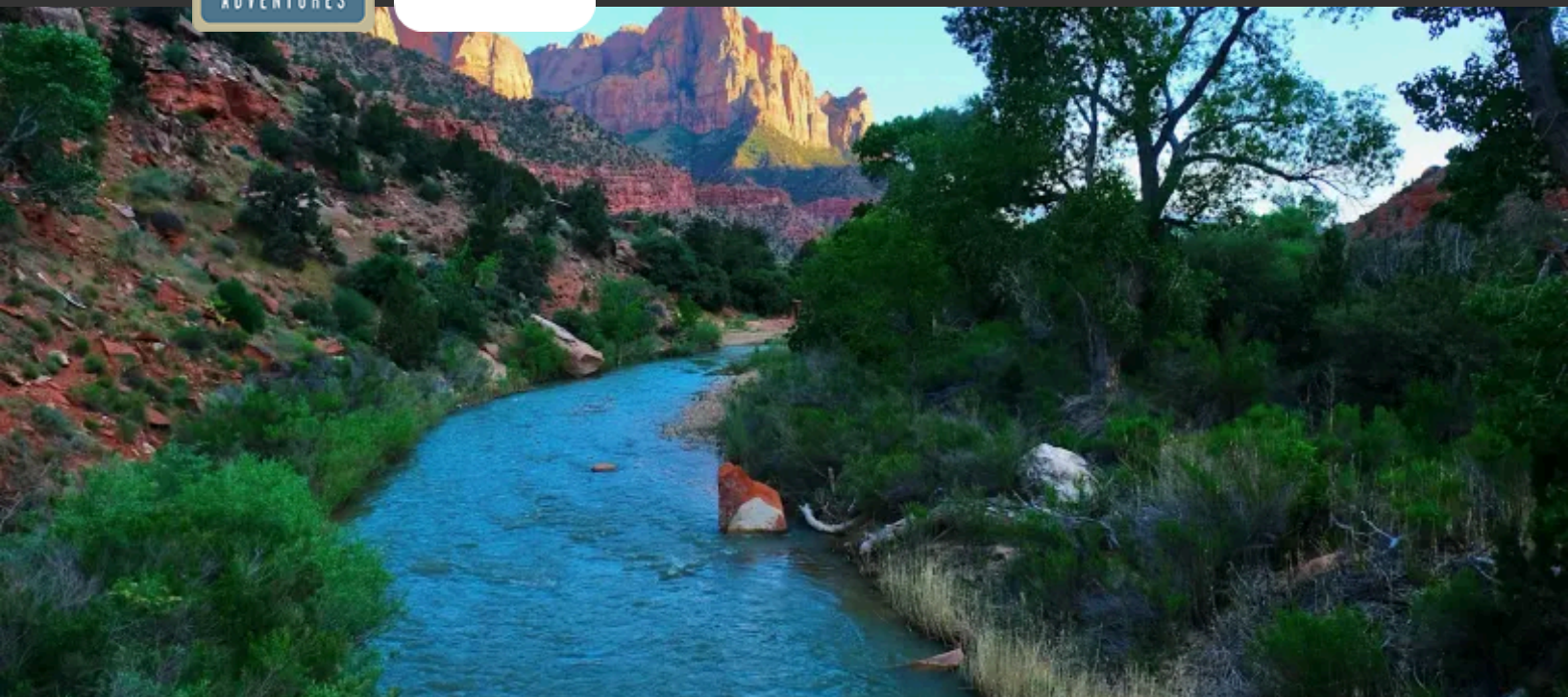
Discovering Our Planet Together

Table of Contents:

Trip Overview	3
Trip Itinerary	4
Trip Accommodations	9
What Makes Nat Hab Different?	11
Dates & Pricing Information	14



Discovering Our Planet Together



Trip Details:

Days

8 Days /
May-Jun &
Sep-Oct

Price

From \$6995

Grand Canyon, Bryce & Zion

Iconic Vistas & Magical Light—Discover the Red Rock Wonders of the American Southwest

Standing on the edge of the Grand Canyon, searching the shadowy depths for the silver ribbon of the Colorado River thousands of feet below, we are overcome by wonder at our own tiny instant in geological history. The canyon's sedimentary layers, stacked more than a mile thick, are a calendar for the millennia, formed by the erosive power of water and wind over eons. While this region is known as Red Rock Country, the canyon walls glow gold, rose, rust and violet, ever-changing as the high desert light works its magic. No less moving are neighboring Bryce and Zion, whose pink pinnacles and soaring sandstone ramparts round out this trio of famed Southwest national parks. Explore highlights and hidden corners of all three on this classic Western nature adventure, guided by natural history experts.

Trip Highlights

Gaze into the multihued layers of the Grand Canyon from less-visited overlooks, as our Expedition Leaders unveil millennia of natural history

Witness the geological drama of Zion National Park, Smith Mesa, Kolob Canyons and surrounding environs with thrilling aerial views on a private helicopter flight

Bryce, Zion and Grand Canyon are all International Dark Sky reserves: Ignite your awe as you observe through telescopes with a Bryce Canyon park ranger



Discovering Our Planet Together



Itinerary At A Glance

Day 1

St. George, Utah

Day 2

Cedar Breaks National Monument
/ Bryce Canyon National Park—
Dark Sky Experience

Day 3

Hiking in Bryce Canyon National
Park

Day 4

Bryce Canyon Sunrise / Zion
National Park

Day 5

Hiking in Zion National Park /
Scenic Helicopter Flight

Day 6

Kaibab Plateau Scenic Drive /
Grand Canyon National Park

Day 7

Grand Canyon Sunrise / Exploring
the South Rim

Grand Canyon, Bryce & Zion Itinerary

Iconic Vistas & Magical Light—Discover the Red Rock Wonders of the American Southwest

Day 1: St. George, Utah

Our canyonlands adventure begins in the red rock country of St. George, Utah. This evening we meet for a welcome dinner at a local restaurant. Our Expedition Leader offers a brief orientation to the history, geology, wildlife and ecology of the Colorado Plateau, which we explore in depth on our foray through three of the world's most magnificent national parks.





Itinerary At A Glance

Day 8

Grand Canyon / Flagstaff / Depart

Day 2: Cedar Breaks National Monument / Bryce Canyon National Park—Dark Sky Experience

En route to Bryce Canyon, we stop at several scenic spots, including Cedar Breaks National Monument. From the rim at 10,350 feet, gaze down into a half-mile-deep geological amphitheater of stacked orange layers, fins and pinnacles. Dynamic natural forces over millennia have exposed and sculpted this terraced terrain topped with ancient bristlecone pines and subalpine forest. Cedar Breaks crowns the Grand Staircase, which our itinerary follows throughout the trip as we descend this series of five sedimentary “steps” into ever older geological features, each characterized by a different color and biome over a time span of more than 200 million years.

Later this afternoon we reach Bryce Canyon. The national park was established in 1925 to protect and draw visitors to its fantastical landscape, which feels like a portal to another world. Its pink pinnacles, limestone formations and natural amphitheaters capture the imagination with geological surprises. Red rock walls are rent with deep channels while whimsical hoodoos—rock spires carved eons ago by erosion—rise hundreds of feet into the sky. Rising early to watch the sunrise and lingering over radiant sunsets, experience the ever-changing grandeur of this astounding landscape.

After dark, another wonder awaits: a chance for some of the best stargazing in North America. The night skies around Bryce are some of the darkest in the United States, thanks to the park’s high elevation above 8,000 feet, its remote location, and its clear, clean air. Joined by a park ranger, we head just outside the park bounds, away from any artificial light, to witness the night sky through telescopes. Offering an extraordinary view of the cosmos, Bryce holds International Dark Sky status, and the absence of light pollution reveals more than 7,500 stars on a clear night, while the Milky Way arcs in a luminous band across the dark tableau overhead. During a new moon, the sight is otherworldly, as planets, constellations and distant galaxies seem close enough to touch.

Day 3: Hiking in Bryce Canyon National Park

Today we discover Bryce Canyon on foot, the only way to explore its intricate sedimentary depths at close range. Guided by our Expedition Leader, drop below the rim on a series of switchbacks that descend 550 feet into the lower canyon, where we find pinyon pines and junipers. Heading back up again, gain a different perspective on the forest of hoodoos as we weave among their unique shapes (Guests who don’t wish to tackle the elevation gain can walk the paved trails on the rim.) In the afternoon, more opportunities await to explore Bryce from different vantage points, including a panorama across the vast landscape of the natural amphitheater crowded with hoodoos.



Discovering Our Planet Together

Day 4: Bryce Canyon Sunrise / Zion National Park

Given our optimal location near the rim, it's easy to rise early to watch the sunrise over Bryce Canyon. We witness a striking array of colors as the changing light illumines the stone pinnacles and sheer cliffs. A morning hike offers yet more angles on this wondrous landscape, more evocative with each turn in the trail.

Then it's time to head for Zion National Park on one of the most scenic drives in the American Southwest. Keep an eye out for bighorn sheep as we follow the narrow two-lane road that cuts through canyons and twists below towering monoliths. As we approach Zion, we pass Checkerboard Mesa, a 6,250-foot landmark of striated Navajo Sandstone. Early Mormon pioneers gave Zion its name—so striking was its beauty that it evoked images of the biblical Promised Land. The U.S. government agreed and made it a national park in 1919. Multi-hued sandstone ramparts rise above the valley floor where the Virgin River flows among the cottonwoods, carving a deep canyon over millennia and blending lush greenery with dramatic rockscapes.

Day 5: Hiking in Zion National Park / Scenic Helicopter Flight

Begin the day exploring Zion Canyon on foot, following narrow trails below 2,000-foot cliffs of Navajo Sandstone that soar above us on either side. On the canyon floor, see lush and colorful hanging gardens growing out of the rock. Trails along the river lead to quiet recesses, where we may hear and see many birds unique to the American West. Listen for the haunting cry of canyon wrens, look to the skies overhead for golden eagles and prairie falcons, and find American dippers and phoebes in the willows along the riverbanks. Then climb higher for dramatic views of the towering canyon walls and shadowy depths below. Varied overlooks reveal different vantage points on Zion's geological drama, as we witness the tremendous power of water and wind to sculpt this landscape. A highlight of our visit is a helicopter flight in and around Zion National Park, featuring aerial views of Smith Mesa, Kolob Canyons and Red Butte Mountain, in addition to notable landmarks of the park itself.



Discovering Our Planet Together

Day 6: Kaibab Plateau Scenic Drive / Grand Canyon National Park

Reflecting the adage that travel is more about the journey than the destination, our long drive today takes us through some of the most geologically dramatic landscapes of the American Southwest. As we leave the soaring red cliffs of Zion behind, the terrain gradually opens into high desert plains dotted with juniper and sagebrush. Traversing the vast Kaibab Plateau, we make numerous stops while exploring a landscape shaped by ancient seas and volcanic activity. The colors shift constantly—from rust-colored rock formations to wide, windswept mesas and deep canyons carved over millennia. By the time we reach the pine forests surrounding the Grand Canyon, we feel steeped in timeless natural history.

One of America's most iconic national parks, Grand Canyon was established in 1919. Lying entirely within the state of Arizona, the park encompasses 278 miles of the Colorado River and adjacent Colorado Plateau. Located on the ancestral homelands of 11 tribal communities that hold the space sacred, Grand Canyon is one of the most spectacular examples of erosion anywhere on Earth. Humans have lived in the Grand Canyon region for 25,000 years, a mere blip in time compared to the 1.7 billion-year-old Vishnu Schist rocks visible along the Colorado River in the bottom of the canyon. Once we check in to our hotel near the South Rim late this afternoon, we gather for dinner and an orientation to all that lies ahead as we delve into the canyon's wonders.

Day 7: Grand Canyon Sunrise / Exploring the South Rim

No western adventurer should miss gazing into the mile-deep chasm in the ethereal light of sunrise, and we join our Expedition Leader to greet the dawn's rays at a stirring viewpoint. With a full day ahead to explore the Grand Canyon from the South Rim, there's plenty of time to absorb the drama of one of the planet's most magnificent natural landscapes, watching the variegated canyon walls change color as the light shifts throughout the day. Sunset will likewise bring astonishment as we watch the canyon depths shift from orange and rust to pink and purple, as the sinking sun casts its glow in contrast with the shadows moving across the etched promontories and crevasses.

We spend the day on several mellow hikes, tapping the deep knowledge of our Expedition Leader who knows the best trails and viewpoints for a more secluded encounter with this extraordinary geological phenomenon. Admire vistas from several different spots along the rim and just below, doing our best to enjoy moments of relative solitude away from crowds. As the sun begins to set, we share a farewell dinner together on the South Rim. Then step outside once night falls for a last chance to stargaze: Grand Canyon National Park was recognized as an International Dark Sky Park in 2019, after a three-year endeavor to protect its night skies by altering light fixtures and taking measures to reduce light pollution.



Day 8: Grand Canyon / Flagstaff / Depart

Rise at dawn for a last sunrise over the Grand Canyon before we depart after breakfast. Our high desert adventure concludes with a drive to Flagstaff, Arizona, the southern gateway to the Grand Canyon. A transfer to the airport is included to meet departing flights this afternoon. If your schedule permits, you may wish to explore a bit of this walkable city on your own. Surrounded by pine forests at 7,000 feet in the northern Arizona high country, Flagstaff's historic downtown is a lively mix of cafes, pubs, locavore dining, art galleries and funky boutiques.

***Please note:** This itinerary is subject to change, as departures may visit Grand Canyon, Zion and Bryce in a different order than what is outlined above. Your precise itinerary will be communicated to you once your trip dates are confirmed.*



Discovering Our Planet Together



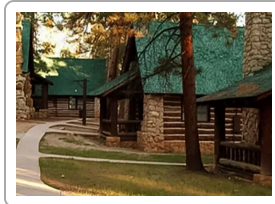
Accommodation Details:

Bryce Canyon Lodge
Ruby's Inn
Bryce Canyon Grand Hotel
SpringHill Suites Zion
Zion Lodge
Hyatt Place St. George
Thunderbird Lodge
Maswik Lodge
Kachina Lodge
The Grand Hotel

For detailed descriptions, visit
nathab.com/us-national-parks-tours/canyons-adventure/accommodations

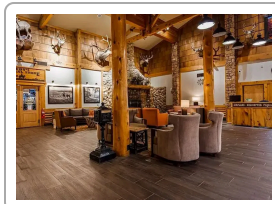
Grand Canyon, Bryce & Zion Accommodations

Iconic Vistas & Magical Light—Discover the Red Rock Wonders of the American Southwest



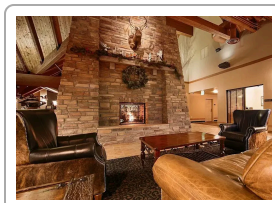
Bryce Canyon Lodge

This venerable 1920s lodge stands alone inside the national park, offering rustic cabins, contemporary hotel rooms and unrivaled access to trails, stunning views and the Bryce Amphitheater.



Ruby's Inn

Opened to Bryce Canyon visitors as "Tourist Rest" in 1919, the original historic lodge was rebuilt after a 1984 fire yet retains the same family-run hospitality with a fourth generation at the helm.



Bryce Canyon Grand Hotel

The newest lodging in the Bryce Canyon area, this highly acclaimed full-service hotel offers deluxe accommodations in spacious 350-square-foot guest rooms

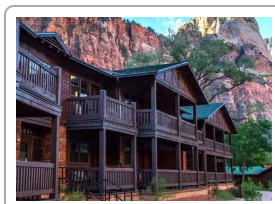


Discovering Our Planet Together



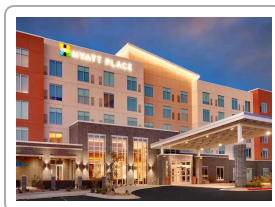
SpringHill Suites Zion

Just a mile from the entrance to Zion National Park, this stylish jumping-off point for exploring Utah's canyonlands offers spacious modern suites filled with natural light and red rock views for breakfast.



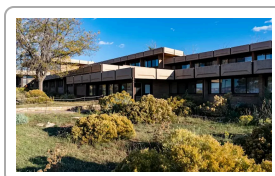
Zion Lodge

The only accommodation located inside the national park, Zion Lodge offers coveted proximity and classic 1920s atmosphere, backdropped by the canyon's massive sandstone ramparts.



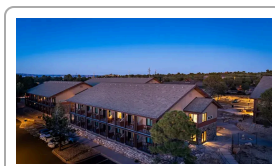
Hyatt Place St. George

The premier place to stay in St. George, Hyatt Place offers a central location, grand views of the red rock surroundings, and large, light-filled rooms in earthy desert tones.



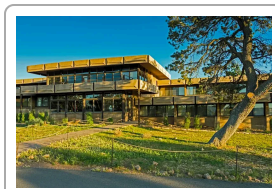
Thunderbird Lodge

Situated directly on the Grand Canyon's South Rim in the heart of the historic district, Thunderbird Lodge offers rooms with partial canyon views and direct access to the Rim Trail.



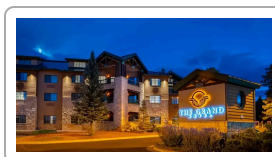
Maswik Lodge

Situated in Grand Canyon Village, Maswik Lodge is a 280-room complex that recently completed a \$30 million renovation. It features eco-friendly accommodations and is dark sky compliant.



Kachina Lodge

A mid-century modern lodge with contemporary accommodations, canyon views, essential amenities and a prime location near the South Rim from which to explore the surrounding natural beauty.



The Grand Hotel

Just one mile from the Grand Canyon's South Rim, this rustic lodge features timber architecture, cozy rooms, a steakhouse, indoor pool, fitness center and an artisan gift shop.



See the Corners, Colors & Characters Most Visitors Miss

While travelers may be familiar with the sweeping panoramas and fantastic formations of Bryce, Zion and the Grand Canyon, few get to experience these iconic national parks off the conventional track. Relegated to bus tours or navigating crowded park roads in your own vehicle, along with heavily traveled trails, most visitors miss a quieter encounter with the Southwest's magnificent monuments, including secret spots revealed by our in-the-know guides. Here's what makes our approach better:

1 Experience All the Wonder & None of the Hassle

Zion, Bryce and Grand Canyon are some of America's most popular parks, globally coveted destinations. It's imperative to book accommodations months out, and in-demand park lodges often fill within hours of space made available annually. Most visitors end up fighting to see the sights with hundreds of other visitors, juggling brochures, maps and guidebooks. When you travel with us, you'll worry about none of that: we arrange the best places to stay, provide outstanding interpretation, and show you hidden corners of the parks via our "insider" knowledge.

2 Small Groups Led by Two Expedition Leaders

Our trips are limited to 13 travelers. Each is guided by two Expedition Leaders, for the utmost in flexibility, quiet nature encounters and personalized service. We divide into even smaller groups, traveling in two vehicles that can access places buses can't reach, while providing the opportunity to pursue different activities to suit varying physical ability levels.

3 Private Helicopter Flightseeing over Zion & Surroundings

Gain a rare and thrilling perspective on Zion's canyon walls and neighboring geological formations, including Smith Mesa and Kolob Canyons, on a 20-minute private helicopter flight covering 35 miles. Our swift aircraft flies low enough for an exhilarating view on the intricate landscapes below, offering panoramic vistas you can't get on the ground.

4 Dark Sky Experience in Bryce Canyon

Bryce Canyon, like the other two parks we visit, holds International Dark Sky designation. Once night falls, we head out with a park ranger to view an astonishing array of glittering stars under some of the darkest night skies on Earth, viewing planets, constellations and galaxies through high-powered telescopes.



Discovering Our Planet Together

5 A More Intimate Experience of the Grand Canyon

At every turn, we aim for a quieter experience of the Grand Canyon. While crowds are often inevitable, our Expedition Leaders know the secret trails and less-visited overlooks, and we take advantage of the early morning hours to greet the sunrise and enjoy more serene experience on the rim.

6 Take Part in Both Classic and One-of-a-Kind Activities

Of course we include coveted highlights, like viewing the Grand Canyon from iconic rim overlooks and walking along the Virgin River in Zion, but we also add more unusual sights and pursuits that most visitors don't have access to. Our Expedition Leaders are intimately familiar with this region and introduce you to the crannies, cultures and local characters that make it truly come alive.

7 Enjoy Personal Interactions with Local Residents

While the geology of the Southwest is the greatest draw of canyon country, the human history of the region is also fascinating. From Native Americans to Mormon pioneers, from cowboys to river runners, explorers and settlers of the canyons have inspired their fellow humans for eons. You'll get to meet some of the local people who have a history here—and a few stories to tell.

8 Chase the Best Light for Dramatic Vistas and Photography

The overhead sunlight is a dominant midday feature in the desert Southwest. But it doesn't make for the best views of canyon country, let alone photos. That's why we pursue light conditions that enhance the geological drama we've come to see. We rise early to catch the first rays of dawn bathing the rock formations in a vermillion glow. As the morning sun climbs, it reveals a shifting palette that transforms the natural bridges, cliffs and canyon walls. And we linger at sunset, watching the colors glow, deepen and fade.

9 Nat Hab's Exclusive North America Safari Cruisers Enhance Viewing

Our are customized luxury vans that are exceptionally comfortable and equipped with either a pop-top roof or wide roof hatches that open for unimpeded sightseeing and photography. Designed for exploring America's national parks, they offer the best of both necessities: an expedition-ready exterior and a spacious, luxurious interior for the ultimate in comfort. We never fill them to capacity, so every guest gets a window seat plus plenty of room for your personal belongings.

10 Stay in the Most Coveted Locations

We select the most atmospheric inns and lodges for their ambience, history and proximity to nature (ask for details re: specific hotels on your chosen departure date, which may vary). Staying at inns that are a classic part of national park heritage adds to your experience—and you don't have to scramble for reservations, which are almost impossible to get on your own.



Discovering Our Planet Together

11 Our Guides Know Canyon Country Intimately

With decades of collective experience, our naturalist guides know where to find the “paths less traveled” for wildlife watching and striking views. They have secret spots where we can avoid the swarms of tourists that besiege the parks' most crowded locations, and they'll inform you about every aspect of the region's wildlife, geology, natural history and Indigenous cultures. With lots of surprises up their sleeves, our Expedition Leaders share a side of Canyon Country most visitors miss. **See Expedition Leader bios** with traveler comments regarding the quality of our leaders.

12 Our Quality-Value Guarantee Ensures an Exceptional Canyons Experience

With Natural Habitat Adventures, you receive our exclusive guarantee that clearly states that we will meet the high expectations we set forth in our promotional materials. To our knowledge, this is the most ambitious guarantee made by any adventure travel company.

13 Feel Good About Your Carbon-Neutral Journey

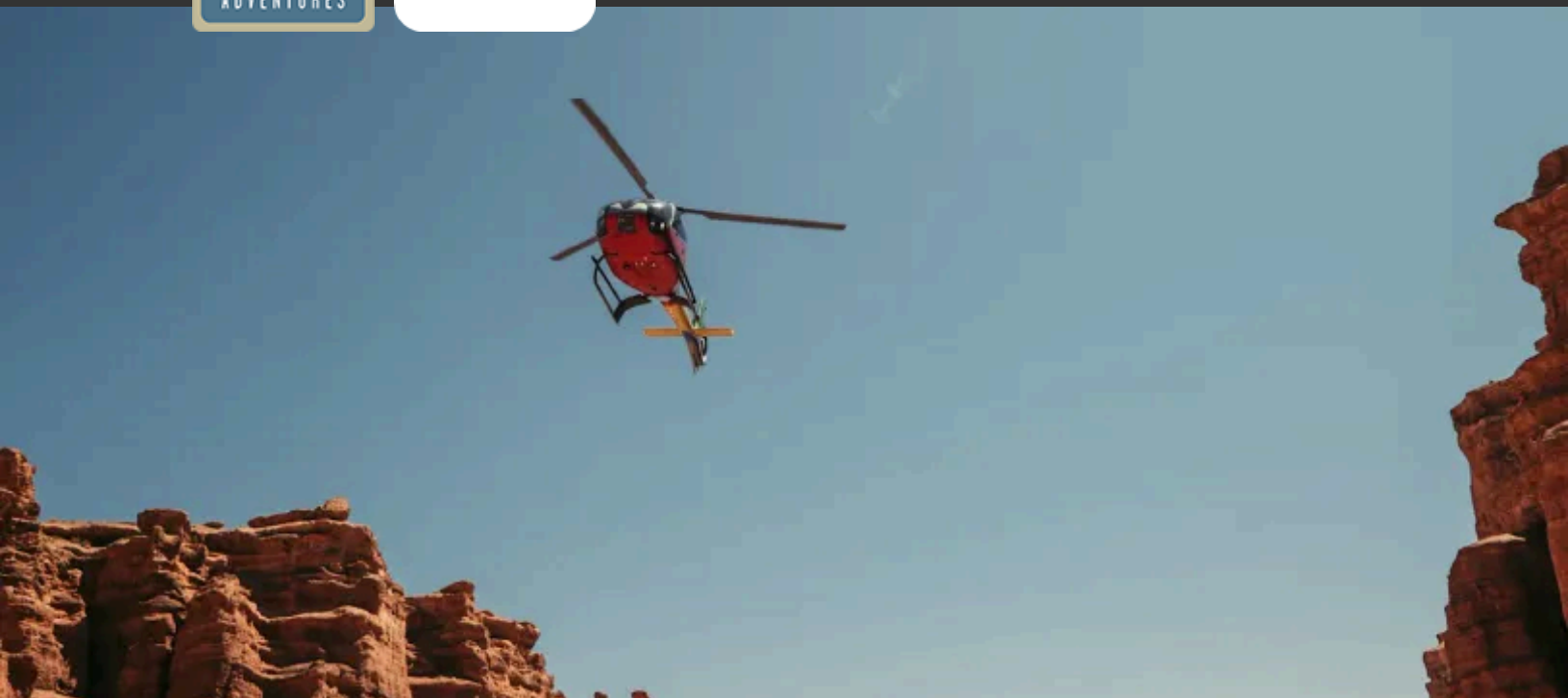
We care deeply about our planet, as we know you do. When you travel with us, the carbon emissions from your trip are 100% offset—including your round-trip flights from home. Natural Habitat Adventures has been the world's first carbon-neutral travel company since 2007.

14 Natural Habitat Adventures Is World Wildlife Fund's Travel Partner

Because of our commitment to environmentally friendly travel, as well as the exceptional quality of our small-group nature adventures, World Wildlife Fund, the world's leading environmental conservation organization, has named Natural Habitat Adventures its worldwide travel partner—a designation that makes us exceedingly proud!



Discovering Our Planet Together



Dates & Pricing Summary:

Prices:
From \$6995

Group Size:
Limited to 13
Travelers

Grand Canyon, Bryce & Zion Dates, Pricing & Info

Iconic Vistas & Magical Light—Discover the Red Rock Wonders of the American Southwest

2025 Departures

Departure	Return	Notes
Sep 19, 2025	Sep 26, 2025	\$7395 USD
Sep 28, 2025	Oct 5, 2025	\$7895 USD Photo Expedition
Oct 7, 2025	Oct 14, 2025	\$7395 USD

2026 Departures

Departure	Return	Notes
May 12, 2026	May 19, 2026	\$6995 USD



Discovering Our Planet Together

Departure	Return	Notes
May 20, 2026	May 27, 2026	\$6995 USD
May 29, 2026	Jun 5, 2026	\$6995 USD
Jun 7, 2026	Jun 14, 2026	\$6995 USD
Sep 20, 2026	Sep 27, 2026	\$6995 USD
Oct 7, 2026	Oct 14, 2026	\$7395 USD



Discovering Our Planet Together

Pricing

See <https://nathab.com/us-national-parks-tours/canyons-adventure/dates-fees> for the latest pricing details.

Included

Accommodations, services of Nat Hab's professional Expedition Leader(s) and local staff, scenic helicopter ride over Bryce Canyon, van transportation, all meals from dinner on Day 1 through breakfast on final day, some gratuities, airport transfers on Day 1 and final day, all activities and entrance fees, all taxes, permits and service fees.

Not Included

Travel to and from the start and end point of your trip, alcoholic beverages, some gratuities, passport and visa fees (if any), optional activities, items of a personal nature (phone calls, laundry and internet, etc.), airline baggage fees, airport and departure taxes (if any), optional travel protection and medical evacuation insurance.

Important Information About This Trip

This trip offers our guests a chance to encounter a side of the American Southwest that most casual tourists miss. The main goal of our seasoned Expedition Leaders is to get our travelers to less-visited areas away from heavy crowds in order to experience the wildlife and natural grandeur of the canyonlands in the most secluded manner possible. Specific dates cannot be booked with the national parks until August (for the following year). Trip dates listed are likely to change slightly and will be confirmed at that time. Depending upon availability, itineraries may run in a different order.

Getting There & Getting Home

We recommend that you arrive to St. George, Utah, by 5 pm on Day 1 in order to join your group orientation at 5:30pm. If you are departing out of St. George, Utah, you are free to depart after 12:30 pm on the final day and will be transferred to the airport. If you are traveling to Las Vegas via shuttle, you are free to depart on the shuttle any time after 12 pm and will be transferred to the shuttle station. We recommend booking flights out of Las Vegas for 3 pm or later, depending on your shuttle departure time.



Natural Habitat & WWF: Discovering Our Planet Together

Natural Habitat Adventures • PO Box 3065 • Boulder, CO USA 80307

USA & Canada: 800-543-8917 • International: 303-449-3711

© 2025 Natural Habitat Adventures

WWF's membership travel program is operated by Natural Habitat Adventures (Nat Hab). To date, Nat Hab has provided more than \$6 million in support of WWF's mission and will continue to give 1% of gross sales plus \$175,000 annually through 2028. WWF® and ©1986 Panda Symbol are owned by WWF. All rights reserved.